

PULLMAN-HOLT

Operation & Care Instructions

Save For Future Reference

45-10 Gallon Dry HEPA Filter Poly Vacuum

This vacuum cleaner is a high quality, precision made product. All parts used in the manufacturing of this vacuum cleaner have passed rigid quality control standards prior to assembly and an "each unit" final inspection prior to packaging to assure proper assembly. This vacuum cleaner was protectively packed to prevent possible damage in transit. Should damage occur, please notify the transporting carrier immediately for loss and/or claim.



ABOUT THE MACHINE

TO CONNECT THE HOSE

Simply push the swivel hose cuff into the tank inlet until the lock feature engages. Press the button to remove the hose assembly. The wand and/or tools are attached to the opposite (non-swivel) end of the hose.

DRY OPERATION

The cloth filter located inside the can provides highly efficient separation of dust and dirt particles from the incoming air stream.

CAUTION

Never operate the vacuum cleaner unless the HEPA and never clog filter is in good condition and properly installed.

The use of a disposable paper bag is strongly recommended for picking up very fine dry materials. The paper bag not only makes dirt disposal clean and convenient, but also provides an additional layer of filtration. **CLEAN CLOTH FILTER AFTER EACH USE!**

DRY FILTER CLEANING

Remove the filter from the vacuum and clean by brushing the Never-Clog bag to remove direct accumulation from outer surface. Do not attempt to clean the HEPA filter.

MOTORHEAD

When removing the motorhead, care in handling is essential. Dropping, banging or other abuse may result in a poor vacuum seal and loss in suction power.

STORAGE

Store in a dry location indoors. Wrap the cord carefully around the vacuum head to avoid accidental damage. Clean the tank, filter, hose and tools prior to storage.

CAUTION

Never lubricate the vacuum cleaner motor. The motor bearings are permanently sealed. Introduction of lubricant into the motor may cause premature failure.

NEVER USE THIS VACUUM CLEANER TO PICK UP COMBUSTIBLE OR EXPLOSIVE MATERIALS SUCH AS GASOLINE OR KEROSENE, ETC.

HAZARDOUS MATERIAL PICKUP & CLEAN-UP

FOR DRY OPERATION:

With the HEPA Filter Assembly in place, the motor head securely clamped, and the hose adapter connected to the inlet, plug the power cable into the proper outlet. Select the appropriate hose, wand and/or tool and connect to the hose adapter. The vacuum cleaner is ready for dry use.

DISPOSABLE BAG CHANGING:

Over filling the bag will result in loss of vacuum efficiency. The recommended bag replacement procedure is as follows:

1. Remove vacuum head and HEPA filter.
2. Tape a 6-mil poly bag over the canister so that the canister is completely enclosed.
3. Using the poly bag as a glove, disengage the paper bag from the vacuum inlet stem inside the canister.
4. Invert the canister so that the paper bag tails into the poly bag. Seal the poly bag and dispose as prescribed by law.
5. Attach a new paper bag to the vacuum inlet securely and fold the top of the bag down so it does not interfere with the HEPA filter.
6. Replace the HEPA filter and motor head.
7. Thoroughly vacuum the work area to recover any asbestos dust which may have been dropped.

Dacron "Never Clog"

Filter Bag: H.E.P.A. filter equipped vacuums are supplied with a white "Never Clog" filter bag surrounding the H.E.P.A. filter barrel. The bag should be changed frequently and can be washed in laundry detergent and warm water.

Warning

A used filter is contaminated and must be disposed of in accordance with local and federal E.P.A. regulations.

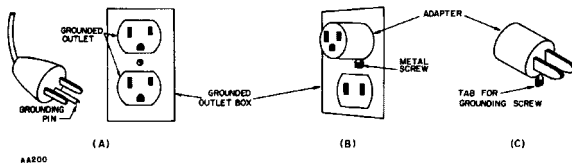
GROUNDING INSTRUCTIONS

This appliance must be grounded. If it should malfunction or break-down, grounding provides a path of least resistance for electric current to reduce the risk of electric shock. This appliance is equipped with a cord having equipment grounding conductor and grounding plug. The plug must be inserted into an appropriate outlet that is properly installed and grounded in accordance with all local codes and ordinances.

WARNING

Improper connection of the equipment grounding conductor can result in a risk of electric shock. Check with a qualified electrician or service person if you are in doubt as to whether the outlet is properly grounded.

Do not modify the plug provided with the appliance – if it will not fit the outlet, have a proper outlet installed by a qualified electrician.



This appliance is for use on a nominal 120- Volt circuit, and has a grounded plug that looks like the plug illustrated in sketch A above. A temporary adapter that looks like the adapter illustrated in sketches B and C may be used to connect this plug to a 2-pole receptacle as shown in sketch B if a properly grounded receptacle is not available. The temporary adapter should be used only until a properly grounded outlet (sketch A) can be installed by a qualified electrician. The green colored ear, lug, or the like extending from the adapter must be connected to a permanent ground such as a properly grounded outlet box cover. Whenever the adapter is used, it must be held in place by a metal screw.

NOTE: In Canada, the use of a temporary adapter is not permitted by the Canadian Electrical Code.

EXTENSION CORDS:

Vacuums that have 3 wire cords requiring grounding must only be used with extension cords that have 3-prong grounding type plugs and 3-pole receptacles.

To determine the minimum wire size required, refer to the chart below:

Minimum Wire Size (AWG) of Extension Cord								
Nameplate Rating-Amps	Total Extension Cord Length (Feet)							
	25	50	75	100	125	150	175	200
0-10.0	18	18	16	16	14	14	12	12
10.1-13.0	16	16	14	14	14	12	12	12
13.1-15.0	12	12	12	12	12	12	12	–

Warning

Before using an extension cord, inspect it for loose or exposed wire, damaged insulation and defective plugs.

IMPORTANT SAFETY INSTRUCTIONS

When using an electrical appliance, basic precautions should always be followed, including the following:

READ ALL INSTRUCTIONS BEFORE USING THIS VACUUM CLEANER

WARNING

To reduce the risk of fire, electric shock or injury:

1. Do not leave appliance when plugged in. Unplug from outlet when not in use and before servicing.
2. Do not expose to rain. Store indoors.
3. Do not allow to be used as a toy. Close attention is necessary when used by or near children.
4. Use only as described in this manual. Use only manufacturer's recommended attachments.
5. Do not use with damaged cord or plug. If appliance is not working as it should, has been dropped, damaged, left outdoors, or dropped into water, contact Customer Service.
6. Do not pull or carry by cord, use cord as a handle, close a door on cord, or pull cord around sharp edges or corners. Do not run appliance over cord. Keep cord away from heated surfaces.
7. Do not unplug by pulling on cord. To unplug, grasp the plug, not the cord.
8. Do not handle plug or appliance with wet hands.
9. Do not put any object into openings. Do not use with any opening blocked; keep free of dust, lint, hair and anything that may reduce air flow.
10. Keep hair, loose clothing, fingers and all parts of the body away from openings and moving parts.
11. Do not pick up anything that is burning or smoking, such as cigarettes, matches, or hot ashes.
12. Turn off all controls before unplugging.
13. Use extra care when cleaning on stairs.
14. Do not use to pick up flammable or combustible liquids such as gasoline, or use in areas where they may be present.
17. Be sure that the vacuum is connected to a properly grounded outlet, inspect the ground pin on the power cord prior to each use.
18. Do not use this vacuum to pick up hazardous materials unless the vacuum is equipped with an appropriate HEPA filter.

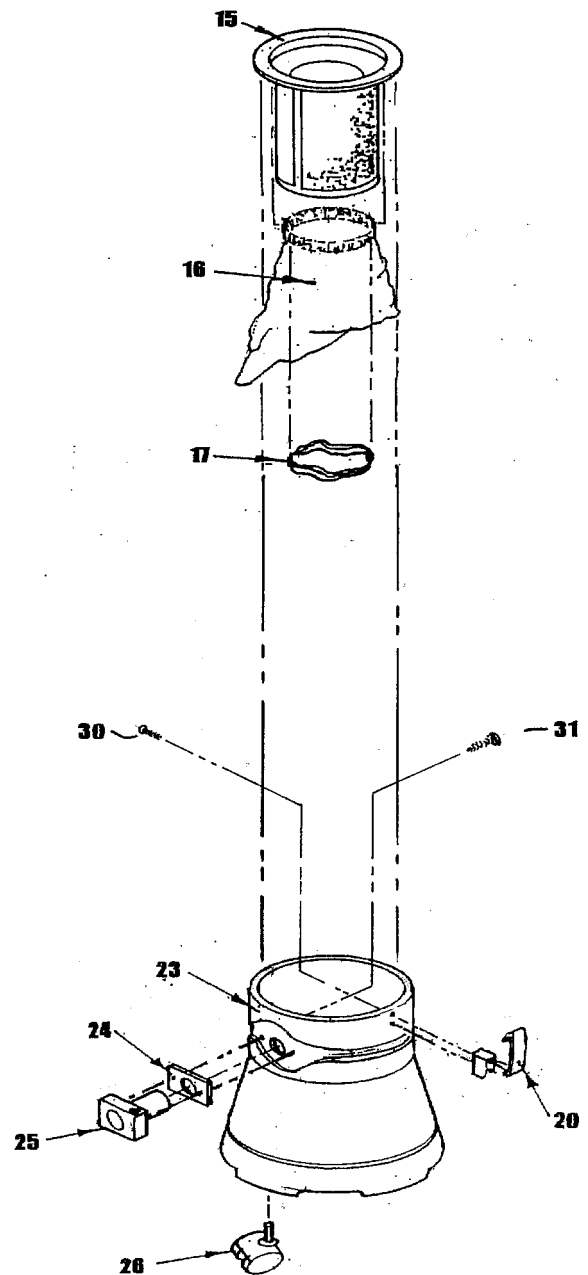
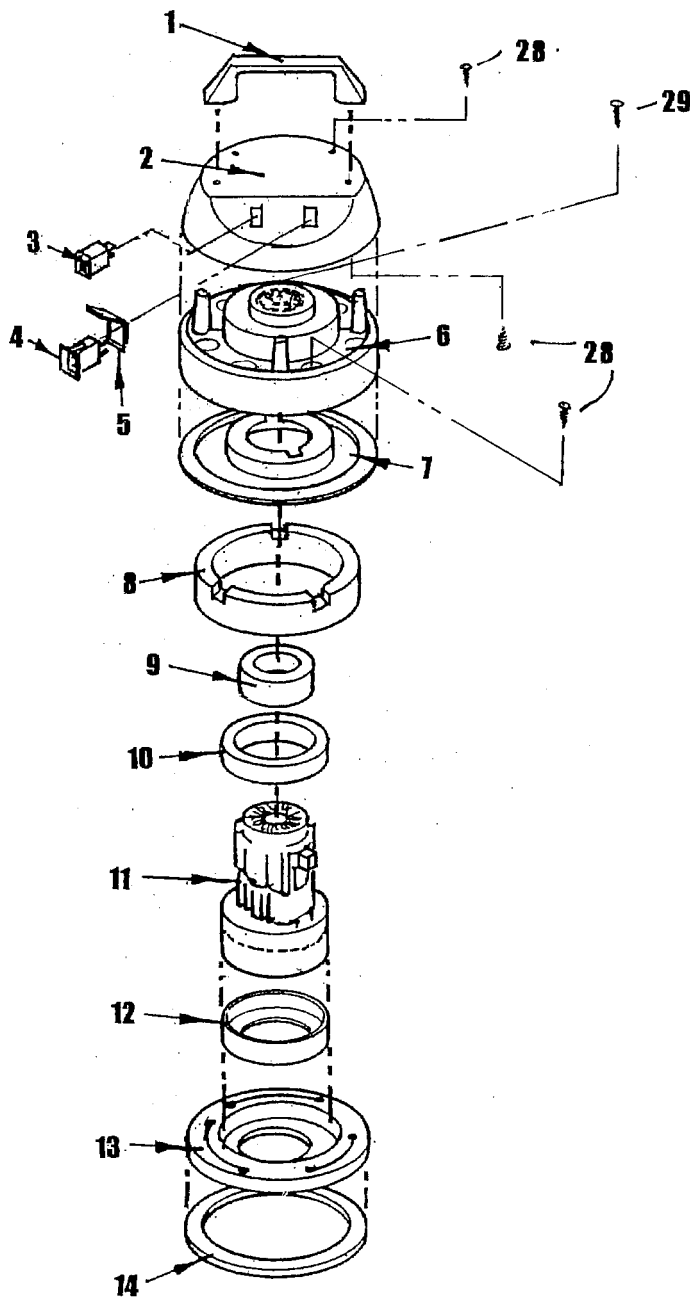
SAVE THESE INSTRUCTIONS

Warning

Electrical repairs should be performed only by a qualified, licensed electrician.

REPLACEMENT PARTS LIST

Ref. No.	Part No.	Description	Qty.	Ref. No.	Part No.	Description	Qty.
1	B701878	Handle Vac Head	1	13	B701900	Can Cap	1
2	B701879	Dome - Red	1	14	B701901	Gasket for Can Cap	1
3	B701881	On - Off Electrical Switch	1	15	B702340	HEPA Filter	1
4	B701880	Power Head Plug Assembly	1	16	B000517	Never Clog Filter Bag	1
5		Plug Shield (Part of Plug Assembly)	1	17	B702343	Bag Retainer - Rubber	1
6	B701884	Motor Head Chamber - Red	1	20	B701891	Clamp - Spacer and Canister	2
7	B701896	Motor Retainer - Top	1	23	B701905	10 Gal. Canister	1
8	B701883	Foam Baffle - Silencing	1	24	B701888	Inlet Gasket	1
9	B701897	Gasket - Motor Top	1	25	B701889	Inlet Assembly	1
10	B701898	Gasket - Motor Plenum Top	1	26	B701906	Dual Wheel Caster	4
11	B000479	Motor - 115 Volt	1	27	B701894	Cord Set (Not Shown)	1
12	B701898	Gasket - Motor Plenum Bottom	1	28	B701877	Screw, 4.8 x 19, type Black	14
				29	B701892	Screw, 2.9 x 19, type A, zn	3
				30	B702390	Screw, 4.8 x 19, type A, ss	4
				31	B702391	Screw, 4.8 x 25, type A, ss	2



TROUBLE SHOOTING GUIDE

PROBLEM	POSSIBLE CAUSE	CORRECTIVE ACTION
Loss of Suction	1. Obstruction in hose or wand. 2. Clogged filter assembly. 3. Uneven gasket fit. 4. Collection can rim is chipped or cracked.	1. Clean hose or wand. 2. Clean or replace filter. 3. Reposition or replace gasket. 4. Replace plastic tank.
Motor Won't Run	1. Blown building fuse or tripped circuit breaker. 2. Defective switch. 3. Defective power cord. 4. Worn motor brushes.	1. Replace fuse or circuit breaker. 2. Replace switch. 3. Replace power cord. 4. Replace brushes.
Operator Being Shocked	1. Defective ground in vacuum or building.	1. Consult a qualified electrician to check and repair ground circuit.

Warning

Always disconnect power cable from electrical outlet before working on this vacuum cleaner.

LIMITED WARRANTY

The vacuum cleaner is warrantied from the date of purchase as shown on your distributor's invoice as listed below.

Motor - 3 years
Parts - 1 years
Labor - 1 year

The warranty covers only failure due to defective parts or workmanship and will be invalidated by improper application and abuse.

Items excluded from warranty coverage, unless found and reported defective immediately upon removal from the original shipping container and before being used by the original purchaser, include: power cords, floor brushes, floor pads, vacuum and solution hoses, belts, screens, strainers, squeegee blades, motor carbon brushes, and filters.

In NO circumstance should you return a failed unit to the factory or a service center.

If you experience any problems with your vacuum during the warranty period, contact the Pullman-Holt National Service Manager in Tampa, FL at (800)237-7582.

PULLMAN-HOLT

10702 N. 46th Street
Tampa, FL 33617
toll free: 800-237-7582
fax: (813) 971-6090