

AIR INNOVATIONS



CLEAN MIST™ SMART HUMIDIFIER™

TABLETOP & FLOOR STANDING WITH REMOTE CONTROL

Instruction Manual and Warranty Information

Contents

Safety Instructions..... 1

Unpacking / Specifications 2

Parts & Contents 3

Filling The Water Tank 4

Operating Instructions..... 5

Weekly Cleaning & Care / Storage 6

Troubleshooting..... 7

Other Great Products 8

Warranty 9



If you have a respiratory condition, please contact your physician prior to use.

FCC STATEMENT

Potential for Radio/Television interference

This device complies with Part 18 of the FCC Rules. Operation is subject to the following two conditions:
(1) This device may not cause harmful interference, and (2) this device must accept any interference received, including interference that may cause undesired operation. This product has been tested and found to comply with the limits for a Class B digital device, pursuant to Part 18 of the FCC rules.

These limits are designed to provide reasonable protection against harmful interference in a residential installation. The product generates, uses, and can radiate radio frequency energy and, if not installed and used in accordance with the instructions, may cause harmful interference to radio communications. However, there is no guarantee that the interference will not occur in a particular installation. If the product does cause harmful interference to radio or television reception, which can be determined by turning the product on or off, the user is encouraged to try to correct the interference by one or more of the following measures:

- Reorient or relocate the receiving antenna.
- Increase the separation between the product and the receiver.
- Connect the product into an outlet on a circuit different from that to which the receiver is connected.
- Consult the dealer or an experienced radio/TV technician for help
- Changes or modifications not expressly approved by the party responsible for compliance could void the user's authority to operate the equipment.

SAFETY INSTRUCTIONS

Prior to using the appliance, read through the instructions for complete use and keep in a safe place for later reference.

- ⚠ **WARNING: DO NOT** use outdoors. Only use as intended and described in this manual.
- ⚠ **WARNING: DO NOT** expose or immerse the Base in water or other liquids.
- Before using the appliance, extend the cord and inspect for any signs of damage. ⚠ **WARNING: DO NOT** use if cord has been damaged.
- ⚠ **WARNING:** Keep cord away from heated surfaces and out of the way, where it cannot be stepped on or tripped over.
- ⚠ **WARNING:** This appliance has a polarized plug (one blade is wider than the other) as a safety feature. If the plug does not fit fully into the outlet, reverse the plug. If it still doesn't fit, contact a qualified electrician. ⚠ **WARNING: DO NOT** attempt to defeat this safety feature.
- ⚠ **WARNING: ALWAYS** place humidifier on an elevated firm, flat, level surface where it's not easily knocked over. (e.g. on a table, chest, cabinet, etc).
- ⚠ **WARNING: DO NOT** place the appliance directly on the carpet, next to a heating vent, under direct sunlight, high temperature areas, near computers or sensitive electronic equipment.
- ⚠ **WARNING: DO NOT** place the appliance directly on wood furniture or other surfaces which could get damaged by water.
- ⚠ **WARNING: NEVER** use in an environment where explosive gases are present.
- ⚠ **WARNING: DO NOT** use any attachments not provided with the unit.
- ⚠ **WARNING: NEVER** use the appliance after a malfunction, after it has been dropped or damaged in any other way.
- Only operate when fully assembled.
- Keep out of reach of children. Close supervision is necessary when this appliance is used by or near children, elderly or disabled persons.
- ⚠ **WARNING: NEVER** drop or insert any object into any opening.
- ⚠ **WARNING: DO NOT** block any air outlets or intakes.
- ⚠ **WARNING: NEVER** cover the appliance when it's in operation.
- ⚠ **WARNING:** To unplug turn controls to the "OFF" position, then remove the plug from the outlet. Ensure your hands are dry.
- ⚠ **WARNING: ALWAYS** unplug and **EMPTY** the Water Tank when not in use for a long period of time.
- ⚠ **WARNING: ALWAYS** turn off or unplug before removing, filling or emptying the Water Tank.
- ⚠ **WARNING: DO NOT** wash, adjust or move without first unplugging the unit.
- ⚠ **WARNING: DO NOT** touch the water or any other part in the Base during operation.
- ⚠ **WARNING: NEVER** operate **WITHOUT** water in the tank.
- ⚠ **WARNING: DO NOT** use hot water in the tank.
- ⚠ **WARNING: ONLY** use water in the tank, never use any additive such as essential oils, eucalyptus, water conditioners, etc... in the water.
- ⚠ **WARNING: DO NOT** move appliance with water inside the tank. In this case remove the Water Tank and empty the Water Reservoir prior to moving.
- ⚠ **WARNING: DO NOT** attempt to repair or adjust the unit. Servicing must be performed by professional or qualified personnel.
- ⚠ **WARNING:** Discontinue use if unit makes loud noises or has a strange smell.
- Perform regular maintenance of the Ultrasonic Nebulizer.
- ⚠ **WARNING: DO NOT** direct the mist against a wall or other home appliance.
- ⚠ **WARNING: DO NOT** pour water into the Base through Air Outlet during cleaning and filling.
- ⚠ **WARNING: DO NOT** rinse Base under faucet.
- ⚠ **WARNING: DO NOT** immerse the Base in water.
- ⚠ **WARNING: NEVER** scrape the Ultrasonic Nebulizer with a hard or sharp object.

Battery Disposal:

- ⚠ **WARNING: DO NOT** dispose of batteries in fire. Improper handling/disposal of batteries may cause batteries to explode or leak. Please dispose of batteries responsibly by throwing away batteries in a proper trash receptacle per township ordinance.


No More Dry Air

Thank you for choosing the Air Innovations® – Clean Mist™ Smart Humidifier™ Tabletop & Floor Standing With Remote Control and congratulations on taking this important step in improving the quality of air in your home or office.

The Air Innovations® – Clean Mist™ Smart Humidifier™ uses Ultrasonic Technology to create humidity instantaneously, while working silently to erase the discomforts of dry air.

Unpacking

1



Remove the Remote Control and Dual Directional Mist Nozzle from the top of the packaging.

2



Carefully remove the Extension Nozzle and humidifier from the box by pulling the Base of the unit (Do not take the unit out of the box by pulling the tank).

3



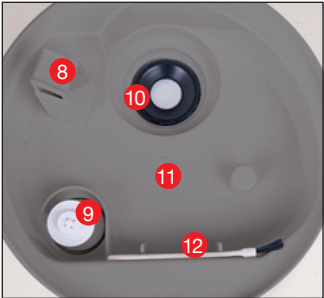
Remove the plastic bag from the humidifier.

*Follow directions to fill and operate the humidifier.

Specifications

Proudct Model	Power Consumption	Current	Rating Voltage	Tank Capacity	Dimensions	Weight
MH-701B	30W	0.4A	110-120V~60Hz	6.5L / 1.7 Gallon	8.25"W x 8.25"D x 33" H	3.83 Lbs.

Parts & Contents



- 1. Dual Directional Mist Nozzle
 - 2. Extension Nozzle
 - 3. Handle
 - 4. Water Tank
 - 5. Base
 - 6. Control Panel
 - 7. Remote Control
- (requires (1) 3V Lithium Battery included)

- 8. Air Outlet
- 9. Water Sensor
- 10. Ultrasonic Nebulizer
- 11. Water Reservoir
- 12. Cleaning Brush
- 13. Ceramic Filter
- 14. Tank Cap
- 15. Bottom Tank Handle

Filling The Water Tank

⚠ **WARNING:** Always unplug the unit before removing the Water Tank.

⚠ **WARNING: DO NOT** touch the water in the Base.

⚠ **WARNING: NEVER** fill the Water Tank from the top of the unit. Follow Water Tank filling instructions in #4.



Remove Extension Nozzle and Dual Directional Mist Nozzle prior to filling the Water Tank.



Lift the Handle on top of the Water to remove the humidifier from the Base.



Make sure the handle is snapped back into place, then turn the Water Tank upside down and remove the Tank Cap by turning it counter clockwise.



Filling the Water Tank:

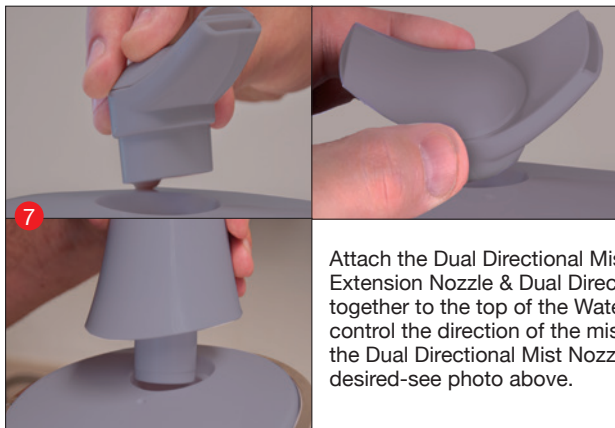
Use clean, cool, tap water.

⚠ **WARNING: DO NOT** use extremely cold water, since it may temporarily reduce the mist output.

⚠ **WARNING: NEVER** fill with hot/warm water or use additives as this could damage the unit and void the warranty. ⚠ **WARNING:** If you have **hard tap water** use our Humidifier Demineralization (hard water) Filters (available at www.Air-Innovations.com) or use **ONLY** filtered, distilled, cold boiled or bottled water.

Replace the Tank Cap by firmly turning clockwise until tight. Turn the Water Tank upright and check the Tank Cap for leaks. If any water drips, remove the Tank Cap and retighten. ⚠ **WARNING: DO NOT** place Water Tank on the humidifier Base if the cap is leaking.

When replacing the Water Tank on the Base, lift the handle up and align the notches on the front of the Water Tank and Base. Ensure the tank is firmly seated.



Attach the Dual Directional Mist Nozzle or Extension Nozzle & Dual Directional Mist Nozzle together to the top of the Water Tank. To easily control the direction of the mist simply separate the Dual Directional Mist Nozzle and position as desired-see photo above.

Operating Instructions

⚠ **WARNING: DO NOT** operate the humidifier without water in the tank.

⚠ **WARNING: NEVER** lift the tank off the Base while the unit is operating.

Manual Use



ON/OFF – Plug in to a standard (120V AC) electrical outlet. The LED Display will turn on for 2 seconds then turn OFF. Press the ON/OFF button once and the “Operating” indicator will turn ON. Mist may not appear immediately; allow up to 15 minutes for the water in the tank to transfer to the base.

NOTE: During the first use you may hear several beeps and the waterless indicator may illuminate before mist appears.



Mist Output – When you turn the unit ON, it will default to the lowest mist setting. Pressing the “Mist” button will increase the output. Press once for Medium, twice for High, three times for Supreme, four times for the Turbo Setting. Pressing the Mist button a fifth time will bring the unit back to Low. **NOTE: Turbo setting is intended for those wanting a more powerful mist and works best while the Extension Nozzle is being used. The Turbo setting will operate for 40 minutes and will then go to the Supreme Mist Setting. User must wait 20 minutes before Turbo setting can be used again.**

Automatic Use



Humidistat – By using this feature the humidifier will automatically monitor and control the humidity level according to your desired setting. Once the desired humidity level is reached the mist will shut OFF until the humidity drops below the setting and then the mist will turn back ON automatically to maintain the humidity level desired. To set this feature press the “Humidistat” button to your desired setting. Settings range from 40%-95% RH (Relative Humidity) in 5% RH increments. A 40%-60% Relative Humidity is recommended. Once you set your desired humidity, the number will flash three times and then the display will revert back to the Relative Humidity. To view the set humidity level, press the Humidistat button once.

Safety Shut Off



Low Water – When the tank is out of water the “waterless” indicator will appear in the display, you will hear three beeps and the automatic safety shut-off will turn the Ultrasonic Nebulizer & unit OFF. Note: You can disable the audible beep by pressing the Beep/Dim button once. To re-enable, press the Beep/Dim button two more times.

Extra Features



Beep/Dim – The humidifier automatically defaults to an audible beep when changing settings, the waterless indicator will illuminate and you will hear three beeps when the humidifier is out of water and the LED Display will be illuminated. To disable one or more of these settings, follow the steps below: Press Beep/Dim once to disable all sound (Beep Off will flash on the display three times and then will remain on the display to indicate the sound is OFF). Press the button twice to turn the LED Display OFF (sound will remain OFF) and press a third time to enable the LED Display and the sound (default function).

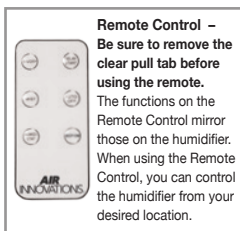


The **Delay Start** and **Auto-Off** buttons allow you to set the humidifier to turn ON and OFF automatically as desired.

Delay Start – The Delay Start feature allows you to program the unit to turn ON automatically. To use, press the “Delay Start” button once; you will see “Delay Start” 01:00H illuminated on the display. This feature works in 1 hour increments and is programmable up to 24 hours. Simply keep pressing the Delay Start button until you get to your desired delay start time, once you have reached the time the display will flash three times and then will start to countdown until the unit turns ON.



Auto-Off – The Auto-Off feature allows you to run the humidifier now and set it to turn OFF at a specific time automatically (in 1 hour increments from 1-24 hours). To use - press the “Auto-Off” button once; you will see “Auto-Off” 01:00H illuminated on the display. This feature works in 1 hour increments and is programmable up to 24 hours. Simply keep pressing the Auto-Off button until you get to your desired Auto-Off time, once you have reached the time the display will flash three times and then start to count down until the unit turns OFF. The display will start alternating between the current ambient humidity and the Auto-Off Timer. **NOTE:** You can use the Delay Start and Auto-Off functions together on this fully programmable LED Display to program the humidifier to turn ON and turn OFF at your desired times.



Extension Nozzle – To convert this unit from a Tabletop unit to Floor unit simply remove the Dual Directional Mist Nozzle from the top of the Water Tank. Place the unit on your desired floor area and insert the Extension Nozzle into the Top of the Water Tank. Then place the Dual Directional Nozzle on the top of the Extension Nozzle. **⚠ WARNING:** Be sure the unit is unplugged and turned OFF when changing the Nozzles.

Weekly Cleaning & Care

- ⚠ **WARNING:** Before cleaning always turn power off and unplug the unit from outlet.
- ⚠ **WARNING:** **DO NOT** rinse Base under faucet. To clean, wipe the Base with a paper towel.
- ⚠ **WARNING:** **DO NOT** use any solvents or aggressive cleaning agents. Keep water away from the Air Outlet. ⚠ **WARNING:** **DO NOT** tamper with the Water Sensor.

About White Dust - Use of high-mineral content water may cause a white mineral residue to accumulate on room surfaces near the humidifier. The mineral residue is commonly referred to as "White Dust". The higher the mineral content (the harder your water is), the greater the potential for White Dust. The White Dust is not caused by a defect in the humidifier, but is due only to minerals suspended in the water from your tap. ⚠ **WARNING:** If you have hard tap water **STOP using tap water and use ONLY** filtered, distilled, cold boiled or bottled water to minimize the White Dust residue or visit our website to purchase our Humidifier Demineralization (hard water) Filters (www.Air-Innovations.com).

Tank Cleaning - Remove the Rotating Mist Nozzle from the top of the Water Tank then remove the Water Tank from the unit. Turn the tank upside down, unscrew the Tank Cap and drain any water from the tank. Wipe the tank with a soft damp cloth then rinse it with warm water inside and out.

Base Cleaning - Gently wipe the Base with a soft damp cloth.

White Dust Cleaning - If mineral deposits "White Dust" are evident around the Ultrasonic Nebulizer **a** and Water Sensor, clean these surfaces with a soft cloth and a small amount of undiluted white vinegar. If necessary, mix a solution of 50% white vinegar and 50% water and fill the Base with enough solution to cover the Ultrasonic Nebulizer **a**. Allow it to soak for an hour and then use the provided brush to gently loosen buildup on the Ultrasonic Nebulizer **b**. Put 1 cup of water in the Base and wipe clean with a soft cloth.

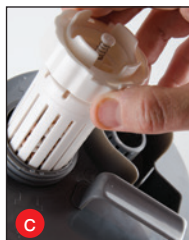
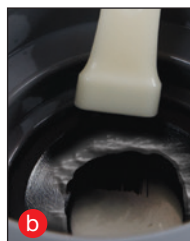
⚠ **WARNING:** **DO NOT** rinse Base under faucet.

Ceramic Water Filter Cleaning - Remove the Water Tank from the humidifier Base. Remove the Tank Cap **c** and rinse Ceramic Filter thoroughly with tap water **d**, then replace on Water Tank.

Surface Cleaning - Clean all surfaces of the unit with a clean damp soft cloth.

⚠ **WARNING:** When emptying the Water Reservoir on the Base, make sure that the water is poured away from the Air Outlet **e**. If water is poured into the outlet it may damage the humidifier.

Replacing The Remote Control Battery - Push the tab to the left of the battery tray towards the right to unlock the tray **f**. While the tab is pushed, pull out the battery tray **g**. Remove the battery from the tray and replace it with a new 3.5 volt lithium battery (CR2025) with the positive side facing up **h**. Insert the tray back into the bottom of the remote control until it locks in **i**.



1. Follow all cleaning instructions prior to storage.
2. Dry all parts, including the inside of the Water Tank.
⚠ **WARNING:** **NEVER** leave water inside the tank for several days.
3. Leave the tank cap partially loosened to prolong the life of the cap.
4. Preferably store in its original box, in a dry place away from high temperatures.
5. Follow all cleaning instructions after long periods of storage.

Storage

Troubleshooting



PROBLEM: Power Light is OFF

POSSIBLE CAUSES

- a. Unit is not plugged in
- b. No power at outlet

POSSIBLE SOLUTIONS

- a. Plug in power cable
- b. Check circuits, fuses, or try a different outlet
- c. Press the POWER button to turn the power on

PROBLEM: Weak or No mist output

POSSIBLE CAUSES

- a. No water in tank
- b. Unit is not level
- c. White Dust on Ultrasonic Nebulizer and/or Water Sensor
- d. Blower not operating
- e. Water temperature is too low
- f. Ultrasonic Nebulizer is not operating

POSSIBLE SOLUTIONS

- a. Fill tank with water and wait 10 – 15 minutes
- b. Place unit on level surface
- c. Clean humidifier per instructions
- d. Ensure there is enough water in Base to activate Water Sensor
- e. Set output to High and wait for 10 – 15 minutes
- f. See Warranty

PROBLEM: Peculiar Odor

POSSIBLE CAUSES

- a. If new unit
- b. Dirty Water Tank or old water in tank
- c. Minerals in well water or hard water

POSSIBLE SOLUTIONS

- a. Gently wipe the Base with a soft damp cloth
- b. Empty old water and clean Water Tank per instructions
- c. Use filtered, distilled, cold boiled or bottled water or visit our website to purchase our Humidifier Demineralization (hard water) Filters (www.Air-Innovations.com)

PROBLEM: White Dust on unit or nearby furniture

POSSIBLE CAUSE

- a. Hard water used

POSSIBLE SOLUTION

- a. Use filtered, distilled, cold boiled or bottled water or visit our website to purchase our Humidifier Demineralization (hard water) Filters (www.Air-Innovations.com)

PROBLEM: Condensation forms around humidifier or windows

POSSIBLE CAUSES

- a. Mist output is set too high for the room size
- b. Direction of Rotating Mist Nozzle

POSSIBLE SOLUTIONS

- a. Decrease the mist output
- b. Change direction of the Rotating Mist Nozzle

PROBLEM: Water is leaking

POSSIBLE CAUSES

- a. Tank Cap is not properly attached
- b. Water Tank is not properly seated
- c. Unit is not on level surface

POSSIBLE SOLUTIONS

- a. Follow #5 on page 4 “Filling the Water Tank”
- b. Follow #6 on page 4 “Filling the Water Tank”
- c. Place on level surface

PROBLEM: Remote control does not work

POSSIBLE CAUSES

- a. Battery may be low or needs to be replaced

POSSIBLE SOLUTION

- a. Replace battery



Try These Other Great
Products For Your **Life!**

G R E A T
I N N O V A T I O N S

Available at: www.ForLifeProducts.com, www.Air-Innovations.com, www.Pursfection.com, www.RejuvenateProducts.com



Pursfection®



Rejuvenate® 
Make it **NEW** Again!



1-YEAR WARRANTY - MH-701B



Air Innovations® Clean Mist™ Smart Humidifier™ Tabletop & Floor Standing With Remote Control comes with a 1-year manufacturer's warranty. If this unit should become defective within 1-year from the date of purchase, or if you have any questions or comments or regarding replacements for any of our products, please contact us directly at:

Call us toll free at: 844-600-1370
Monday thru Friday 8:30 AM to 5:00 PM EST.
Visit us on the web at: www.Air-Innovations.com
e-mail us: sales@air-innovations.com

Or write us:

Air Innovations
Att: Quality Assurance Dept.
2301 SW 145th Ave.
Miramar, FL. 33027 USA

Please fill out the warranty card and
mail back to the above address.
Or, register your warranty online today.

Simply go to:
<http://www.Air-Innovations.com>

NAME _____
ADDRESS _____
CITY _____
STATE _____ ZIP _____
TELEPHONE _____
E-MAIL _____
DATE OF PURCHASE _____
PLACE OF PURCHASE _____

☐ Please check here if you would not like to receive any solicitations from our company

THIS UNIT COMES WITH A 1-YEAR WARRANTY SUBJECT TO THE FOLLOWING CONDITIONS:

In the first year, all repairs will be performed free of charge or the unit will be replaced. This warranty is not transferable, it is valid only for the original purchaser. This warranty will be voided if the unit is subjected to unauthorized repair or impact damage. If you have any questions please call toll free: 844-600-1370. This warranty gives you specific legal rights, and you may also have other rights which vary from state to state.



AIRINNOVATIONS

Air Innovations® ©2016 Great Innovations, LLC. All Rights Reserved. US & International Patents Pending.

