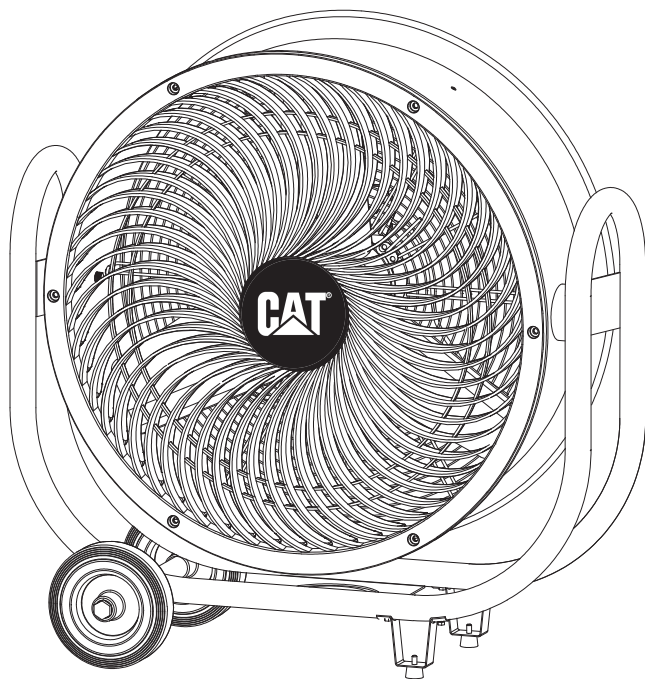




24" HIGH VELOCITY DRUM AIR CIRCULATOR



2 in 1

READ & SAVE THESE INSTRUCTIONS

ASSEMBLY AND OPERATING INSTRUCTIONS

CAUTION:

Read and follow all instructions before operating fan.
Do not use fan if any part is damaged or missing.

WARNING:

To reduce the risk of fire or electrical shock, do not use this fan with any solid state speed control device.

This appliance has a 3-prong plug. To reduce the risk of electrical shock, this plug is intended to fit in an outlet only one way. If this does not fit the outlet, contact a qualified electrician. Do not attempt to bypass this procedure.

If the supply cord is damaged, it must be replaced by the manufacturer, its service agent or similarly qualified person in order to avoid a hazard.

RULES FOR SAFE OPERATION

- Do not insert fingers or any objects through the grill guard when fan is in operation.
- Disconnect fan when moving from one location to another.
- Disconnect the fan when removing guards for cleaning.
- Make sure fan is on a stable, flat surface when in operation.
- Do not use fan in windows. Rain and moisture may create the electrical hazard.
- Do not alter the fan's assembly.
- Be sure FRONT and rear GUARD are completely in locking position before operation.

WHEELS AND RUBBER FEET ASSEMBLY INSTRUCTIONS

1. Install two wheels (3) to the wheel shaft with two screws (1) and two spacers (2).
2. Install two rubber feet stands (4) to the fan base tube with two screws (5).
3. Thread two rubber feet (6) to the rubber feet stand (4) Securely.

INSTRUCTIONS FOR MOUNT FAN TO CEILING (hardware not provided)

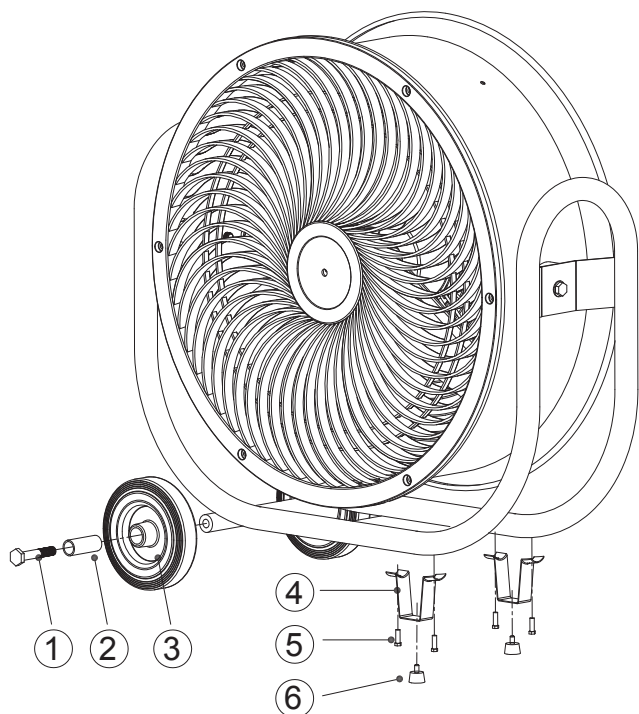
WARNING:

Ensure that fan is mounted on ceiling or beam capable of supporting the fan and suitable hardware is used.

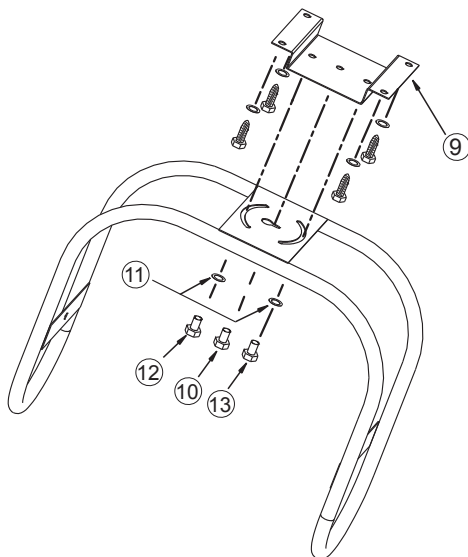
This fan should be installed and mounted by a qualified electrician.

1. Take out mounting bracket (9) and remove three bolts and washers.
2. Mount mounting bracket (9) to ceiling with appropriate hardware (Not Provided). Choose hardware suitable for ceiling / beam style.
3. Thread middle bolt (10) to the mounting bracket (9), use the bolt to locate fan.
WARNING: Do not rely on this bolt alone to hold the fan.
4. Align middle hole on mounting bracket (9) with mounting plate on fan base and insert bolts (12 & 13) and flat washers (11) through mounting plate into mounting bracket (9). Thread bolt half way, do not fully tighten.
5. Rotate fan to desired position and install other two bolts (12 & 13) and washers (11). Tighten bolts to secure fan.

WHEELS AND RUBBER FEET ASSEMBLY INSTRUCTIONS



INSTRUCTIONS FOR MOUNT FAN TO CEILING (hardware not provided)



OPERATION INSTRUCTIONS

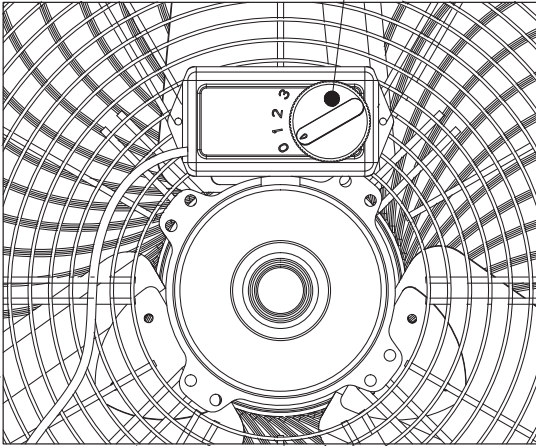
TO ADJUST AIRFLOW UPWARD OR DOWNWARD:

Directly tilt the fan to the desired angle.

SPEED CONTROL:

Rotate switch on the body of drum to the desired setting – Low (1), Medium (2) or High (3).

SPEED CONTROL



CLEANING INSTRUCTIONS

Unplug from electrical supply source before cleaning.

After servicing, any safety device (including grilles and blades) must be reinstalled or remounted as previously installed. Use soft damp cloth, then wipe with dry cloth.

Do not use harmful cleaners. Do not bend the blades.

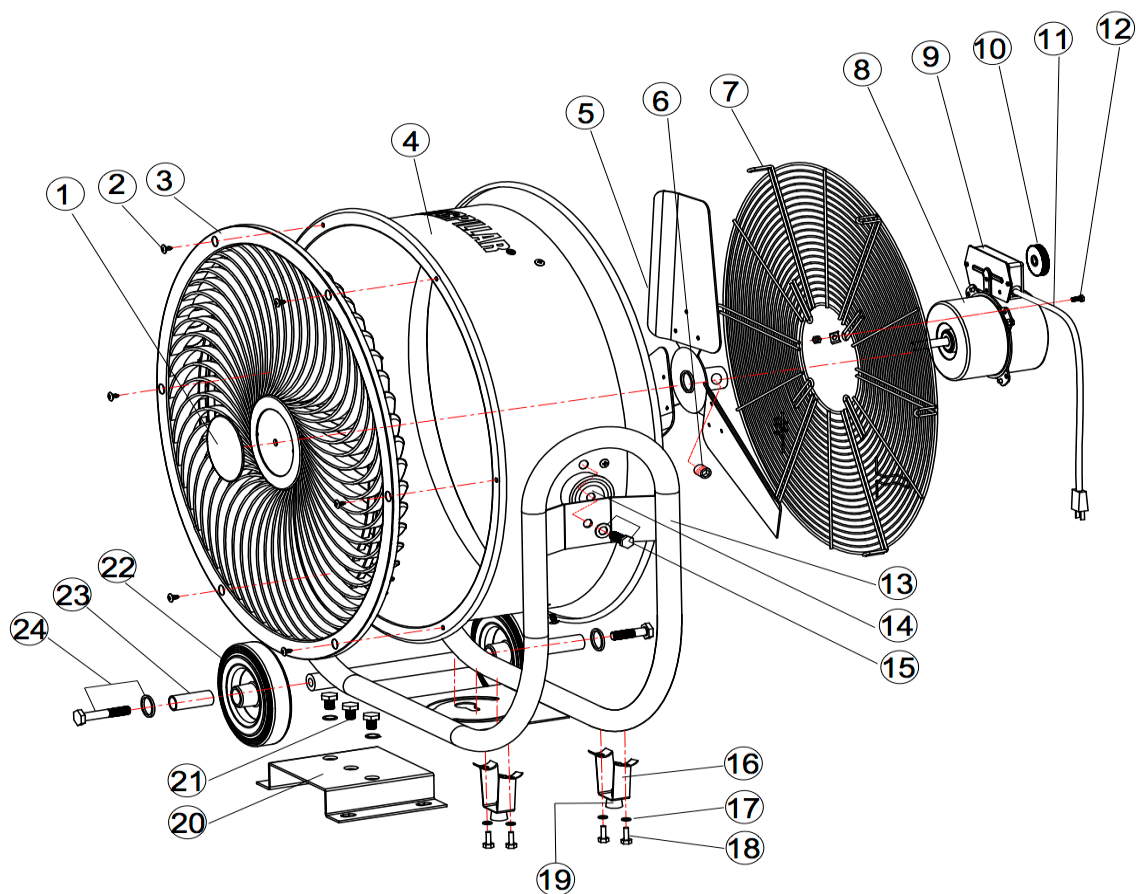
WARNING:

This product is not intended for use by persons (including children) with reduced physical, sensory or mental capabilities, or lack of experience and knowledge, unless they have been given supervision or instruction concerning use of the product by a person responsible for their safety. Children should be supervised to ensure that they do not play with the product.

If you should have any operation questions,
contact us toll free at 1-888-372-8518

3-Year Limited Warranty

No.	Part Name
1	Brand Name Plate
2	Screw
3	Front Grill
4	Drum Fan Housing
5	Fan Blade
6	Fan Blade Set Screw
7	Rear Grill
8	Motor
9	Switch Box
10	Switch Knob
11	Power Cord
12	Motor Mounting Screw
13	Stand
14	Shock Absorber
15	Screw & Washer
16	Rubber Foot Holder
17	Washer
18	Screw
19	Rubber Foot
20	Ceiling Mounting Plate
21	Screw & Washer
22	Wheel
23	Spacer





www.cat.com / www.caterpillar.com

© 2016 Caterpillar. All Rights Reserved. CAT, CATERPILLAR, BUILT FOR IT, and their respective logos, "Caterpillar Yellow," the "Power Edge" trade dress as well as corporate and product identity used herein, are trademarks of Caterpillar and may not be used without permission.

Orient Fan Co., a licensee of Caterpillar Inc.