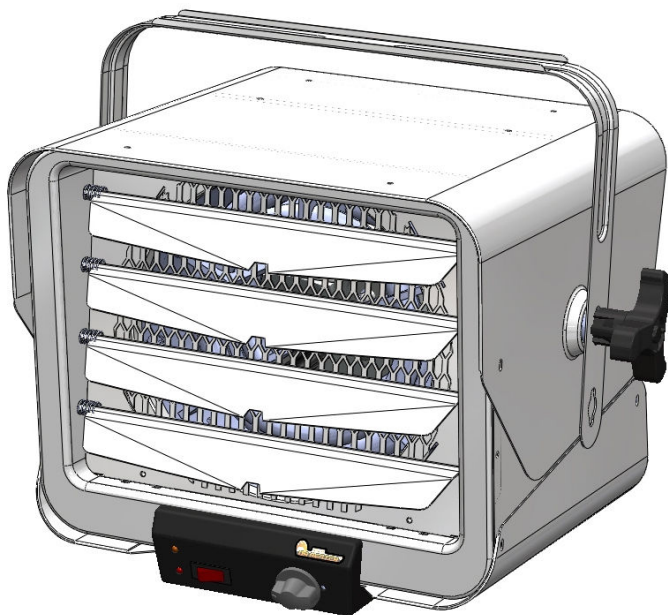




## WALL / CEILING MOUNT HEATER

### OWNER'S MANUAL



Model No.: DR-966  
6000W 240V 60HZ

**IMPORTANT INSTRUCTIONS  
READ & SAVE**



# TABLE OF CONTENTS

Important Instructions..... 3

Specifications and Wiring Diagram..... 5

Parts of the heater ..... 6

**Installing Instructions..... 7-9**

**Operating Instructions..... 10-11**

Maintenance and Cleaning..... 12

Troubleshooting..... 13

# IMPORTANT INSTRUCTIONS

PLEASE READ ALL INSTRUCTIONS BEFORE USING THIS HEATER

**NOTE:** There may be a trace of smoke or odor when unit is first operated. Don't be alarmed. This indicates that a drop of oil fell on the heating coil during the manufacturing process. It will quickly evaporate and should not re-occur.

**Make sure that the room in which the appliance is located is well ventilated during this operation. It is normal for the appliance to emit small cracking sounds when you turn it on for the first time. Do not be alarmed.**

WHEN USING ELECTRICAL APPLIANCES, BASIC PRECAUTIONS SHOULD ALWAYS BE FOLLOWED TO REDUCE RISK OF FIRE, ELECTRICAL SHOCK AND INJURY TO PERSONS OR PROPERTY, INCLUDING THE FOLLOWING:

- 1) Read all instructions before using this heater.
- 2) This heater is hot when in use. To avoid burns, do not let bare skin touch hot surfaces. Keep combustible materials, such as furniture, pillows, bedding, papers, clothes, and curtains at least 3' (0.9 m) from the front of the heater and keep them away from the sides and rear.
- 3) Extreme caution is necessary when any heater is used by or near children or invalids and whenever the heater is left operating and unattended.
- 4) Always switch off the heater when not in use.
- 5) Do not operate any heater after the heater malfunctions, has been dropped or damaged in any manner. Disconnect power at service panel and have heater inspected by a reputable electrician before reusing.
- 6) Do not use outdoors.
- 7) To disconnect heater, turn off power to heater circuit at main disconnect panel.
- 8) Do not install less than 8 feet (2.4m) high from the floor and closer than 1 foot (0.3m) to any adjacent vertical surfaces or walls. Keep at least 4.5 inches (11.5cm) from the back wall (with or without using the wall hanging mounting bracket).
- 9) Do not insert or allow foreign objects to enter any ventilation or exhaust opening as this may cause an electric shock or fire, or damage the heater.
- 10) To prevent a possible fire, do not block air intakes or exhaust in any manner.

11) A heater has hot and arcing or sparking parts inside. To reduce the risk of fire, Do not use it in areas where gasoline, paint, or flammable vapors and liquids are used or stored.

12) Use this heater only as described in this manual. Any other use not recommended by the manufacturer may cause fire, electric shock, or injury to persons.

13) This product must be installed by a certified electrician, in accordance with local codes.

14) For supply cables, use 10 AWG (5.3 mm<sup>2</sup>) copper wires .

15) This heater includes a visual alarm to warn that parts of the heater are getting excessively hot. If the alarm flashes, immediately turn the heater OFF and inspect for any objects, on or adjacent to the heater that may cause high temperatures. DO NOT OPERATE THE HEATER WITH THE ALARM FLASHING. To reset the heater, switch the **CIRCUIT BREAKER** OFF, and wait five to ten minutes for the unit to cool down before turning the heater on.

CAUTION – High temperature, risk of fire, keep electrical cords, drapery, furnishings, and other combustibles at least 3 feet (0.9 m) from the front of the heater and away from the side and rear.”

## SAVE THESE INSTRUCTIONS

# SPECIFICATIONS

## Wall / CEILING Mount Heater

Model : DR-966

Volt: 240 V

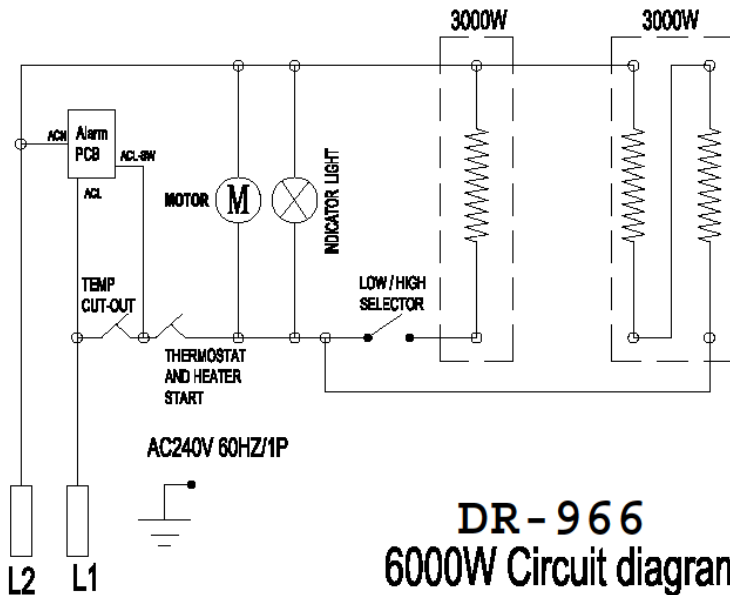
Watts: 6000 W

Frequency: 60 Hz

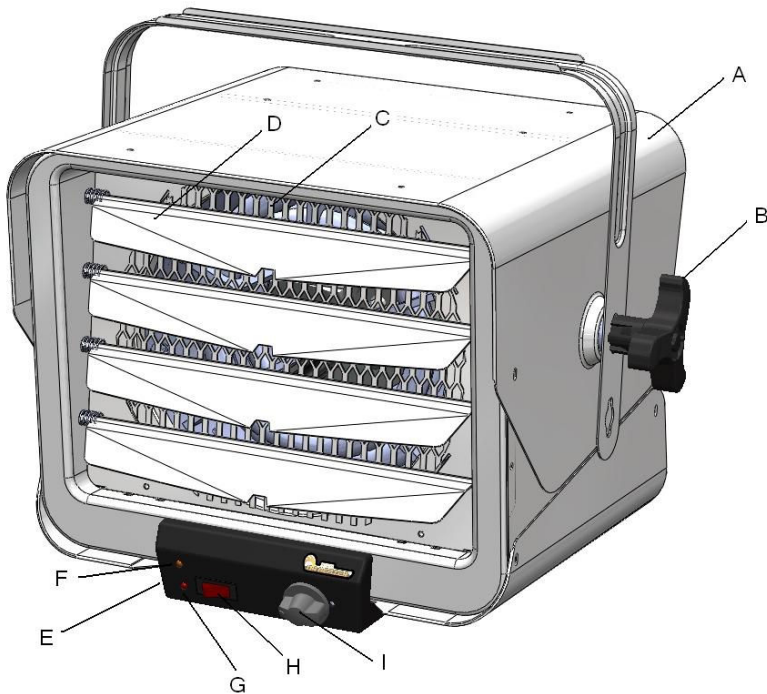
BTU/h: 20472

Recommended Heating Capacity: 1.25 watts / ft<sup>3</sup> (0.03m<sup>3</sup>)

Wiring diagram:



# PARTS OF THE HEATER



- A. Upper Enclosure
- B. Tilt adjustable knob
- C. Front Exhaust Grill
- D. Louver for air direction
- E. Control panel
- F. Power Indicator
- G. Alarm LED
- H. Rocker Switch (High/Low select)
- I. Temperature Setting Knob

# INSTALLING INSTRUCTIONS

**WARNING:** All wiring must be installed by a certified electrician according to the electrical safety.  
The ceiling heater must be grounded in accordance with all national and local building codes.

**All Wiring procedures and connections shall be in accordance with the national and local codes having jurisdiction.**

## **Before installation:**

Disconnect the main supply connection.  
Supply cables shall be 10 AWG (5.3 mm<sup>2</sup>) copper wires  
The heater must be connected to individual branch circuit protected by 35 Amp circuit breaker only.  
Supply cables must be equipped with a dual pole circuit breaker rating at least 240V 35A/pole as main cutoff switch of power connection to the heater.

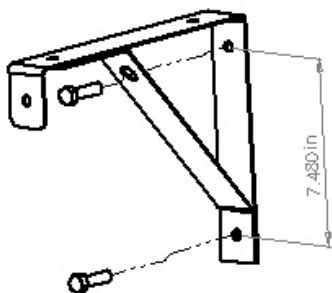
**CAUTION :** High temperature, risk of fire, keep electrical cords, drapery, furnishings, and other combustibles at least 3 feet (0.9 m) from the front of the heater and away from the side and rear.

**WARNING:** To reduce the risk of fire, do not store or use gasoline or other flammable vapors and liquids in the vicinity of the heater.

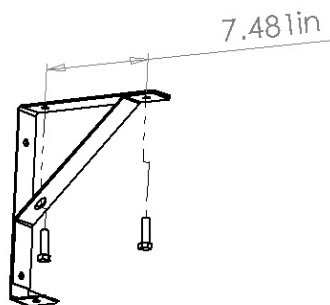
## **INSTALLATION INSTRUCTION:**

1. Keep the unit at least 8 feet (2.4m) away from the floor. This minimum distance must be maintained.
2. Do not install closer than 1 foot (or 0.3 m) to any adjacent vertical surfaces or walls.
3. Keep at least 4.5 inches (11.5cm) from the back wall (with or without using the wall hanging mounting bracket).
4. Mark the drill-hole positions in the wall or ceiling for the mounting bracket.

5. Drill the required holes with diameter fit for the anchor provided for positioning the mounting bracket.
6. Insert the anchors.
7. Attach the mounting bracket to the wall or ceiling and secure with mounting screws.

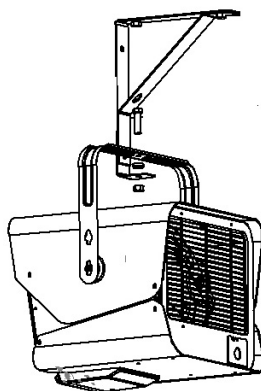
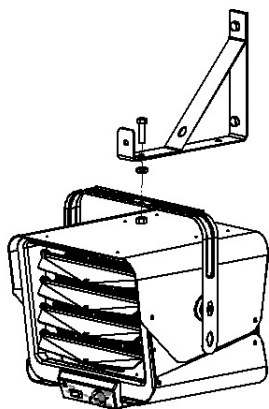


WALL MOUNT



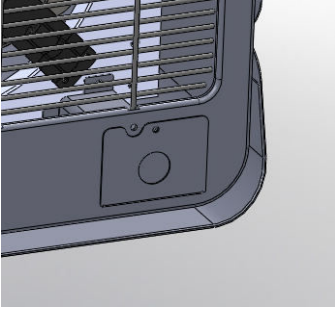
CEILING MOUNT

8. Hook the unit to the mounting bracket and let the unit hang from the mounting bracket.
9. Insert the screw through the mounting bracket and the heater handle, tighten the nut.





10. Loosen the screw to remove the wiring compartment/connection cover in the rear of the heater.



11. Run the electrical power supply cable in flexible conduit and connect to the wiring compartment via the knock-out at back side of the unit.
12. Make the connections properly with connectors which are suitable for the conductor size, including grounding wirings. And after making the connections, arrange the pigtail leads of unit and power supply wires in the wiring compartment.
13. Replace the wiring compartment/connection cover and lock in place with the screw.

# OPERATING INSTRUCTIONS

**WARNING** - The heater must be properly installed before it is used.

## **HAZARD OF ELECTRIC SHOCK, EXPLOSION, OR ARC FLASH :**

- Apply appropriate personal protective equipment (PPE) and follow safe electrical work practices. See NFPA 70E.
- A circuit breaker must be installed and serviced only by qualified electrical personnel.
- Always use a properly rated voltage sensing device to confirm power is off.

**The Select switch on the heater is only for function selection. Use circuit breaker as power ON/OFF device. The circuit breaker is to be installed by certified electrician and shall be located in line of sight from the heater location or shall be capable of being locked in open position. Follow the operating instruction to reduce the risk of fire, electric shock, injury or death to persons.**

- Switch on the circuit breaker to turn on the heater. Then turn the thermostat to the farthest clockwise position. The fan should start and the unit begins heating the room, and lamp is light. After the room reaches comfort level, turn the thermostat counterclockwise until the heater shuts off. The heater will automatically cycle around this preset temperature. To increase the temperature, turn the thermostat knob clockwise. To lower the temperature, turn the thermostat counterclockwise.
- Press the switch to High or Low position for heat selection.

HIGH : 6000W

LOW : 3000W

- Select a thermostat setting.  
Ambient temperature is regulated by adjusting the thermostat to a desired position. Allow the unit to operate and warm up the room. When the desired temperature is reached, turn the control knob counterclockwise until the heater turns off. This is your ideal setting. The heater will start automatically when the room temperature drops below this set point, and will turn off when the set point is reached.
- To turn off the heater, switch off the circuit breaker.  
**The circuit breaker serves as the power disconnection means.**
- This heater includes a visual alarm to warn that parts of the heater are getting excessively hot. If the alarm flashes, immediately turn the heater OFF and inspect for any objects, on or adjacent to the heater that may cause high temperatures. **DO NOT OPERATE THE HEATER WITH THE ALARM FLASHING.** To reset the heater, switch the circuit breaker OFF, and wait five to ten minutes for the unit to cool down before turning the heater on.

There is no user maintenance part except regular cleaning as following description. All other servicing or maintenance should be performed by qualified service personnel.

Before any cleaning, make sure that:

1. Disconnect power supply at source. **Switch off the circuit breaker.**
2. Wait for 60 minutes to ensure the heating element has cool down, and your heater is now ready for cleaning.

# MAINTENANCE AND CLEANING

There is no user maintenance part except regular cleaning as following description. All other servicing or maintenance should be performed by qualified service personnel.

Before any cleaning, make sure that:

1. Disconnect power supply at source. **Switch off the circuit breaker.**
2. Wait for 60 minutes to ensure the heating element has cool down, and your heater is now ready for cleaning.

Regular Cleaning:

1. Do not use cleaning liquid or other chemicals to spray on the unit.
2. Interior dust can often be removed by using a vacuum cleaner with a crevice tool attachment.
3. To clean enclosure, use a clean, soft and lightly damp cloth to gently wipe off the dirt from the surface of the unit. Be sure not to wet the heating element and the switches. Allow the unit to dry completely before using it.

CAUTION: DO NOT ALLOW WATER TO RUN INTO THE INTERIOR OF THE HEATER AS THIS COULD CREATE A FIRE OR ELECTRIC SHOCK HAZARD, DAMAGING THE UNIT.

# TROUBLESHOOTING

If your heater fails to operate, please follow these procedures:

This heater is intended to be a ceiling-mounted heater. It has a thermal cut-off protection. If the thermal cut-off protection trips, then, **switch off the power. Switch off the circuit breaker.** The unit should reset automatically after 10 minutes. If the thermal cut-off protection trips again, consult a certified electrician to determine the reason for overheating.

Problem	Probable Cause	Solution
Unit is not heating.	Overheat protection has temporarily deactivated the heater.	Turn the heater OFF; <b>Switch off the circuit breaker.</b> Wait 10 minutes before turning on the heater
	Room temperature has been warmed up to thermostat setting.	To increase the room temperature, adjust thermostat control knob to a higher setting
	Breaker/Fuse has been tripped.	Check your electrical box to confirm the breaker has not been blown. This may occur if the receptacle is shared between other high consumption appliances.
The heater is producing a burning smell.	Check & ensure there are no combustible materials within 0.9 meters (3 feet) surrounding the heater.	Remove any combustible items from the heater.
	A drop of oil fell on the heating coil during the manufacturing process. It will quickly evaporate and should not occur again.	Ensure room in which heater is situated is well ventilated.
	Ensure a minimum clearance of 36 inches (90 cm) from both sides and rear of heater to adjacent walls.	Reposition the heater so there is enough space around the heater to the adjacent walls.

**PLEASE DO NOT ATTEMPT TO OPEN OR REPAIR THE HEATER YOURSELF. DOING SO COULD CAUSE DAMAGE OR PERSONAL INJURY.**