

# **MIDEA SERVICE MANUAL**

## **VACUUM CLEANER**

**MODEL: V18P01FP25NA TYPE**

**December, 2020**

This document is published to be used for after sales service only. The content are subject to change without prior notice.

In interest of user safety the appliance should be restored to its original condition and only parts identical to those should be applied.

# CONTENTS

<b>WARNING</b> .....	3
<b>PRODUCT</b> .....	3
1. Model .....	3
2. Operation Methods .....	3
<b>SERVICE</b> .....	4
1. System Diagram .....	5
1.1 Components .....	5
2. Maintenance .....	5
2.1 Tool & Measure Instrument .....	5
2.2 Assembly & Disassembly .....	6
2.2.1 Check of Motor .....	6
2.2.2 Assembly of Motor .....	7
2.2.3 Assembly of PCB .....	8
2.2.4 Assembly Machine Body .....	10
2.3 Error Code & Trouble Shooting .....	11
2.3.1 EC01: Vacuum Cleaner Cannot Work .....	11
2.3.2 EC02: Start Directly after Plugging in .....	12
2.3.3 EC03: Low Suction Pressure .....	13
2.3.4 EC04: Smoky Motor .....	14
2.3.5 EC05: Dust Leakage .....	15
<b>ATTACHED FILES LIST</b> .....	16

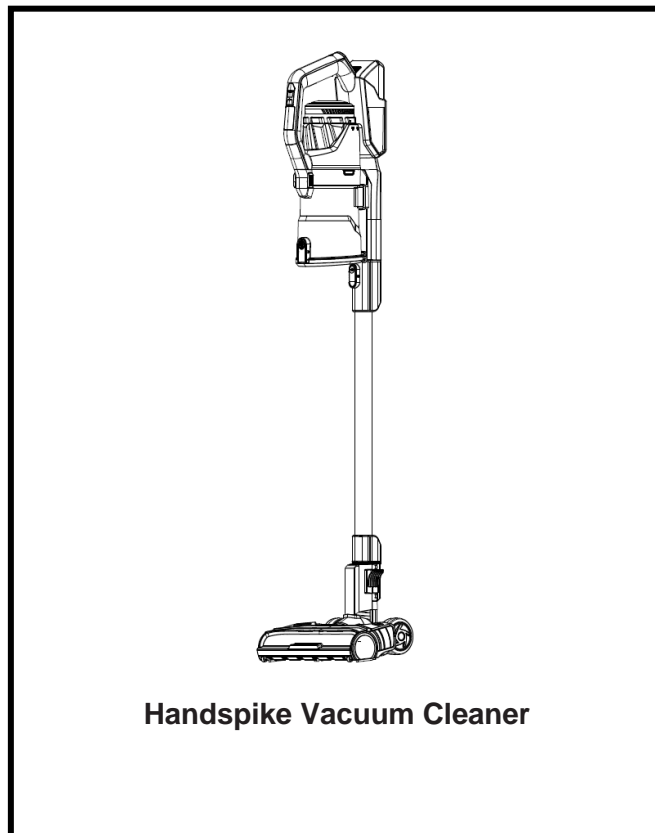
## WARNING

This service information is designed for experienced repair technicians only and is not designed for use by the general public .It does not contain warning or cautions to advise non-technical individuals of potential dangers in attempting to service a product .Products powered by electricity should be serviced or repaired only by experienced professional technicians .Any attempt to service or repair the product or products dealt with in this service information by anyone else could result in serious injury or death.

There are special components used in this equipment which are important for safety .These parts are used by Schematic Diagrams ,Circuit Board Diagrams ,Exploded Views and Spare parts list .It is essential that these critical parts should be replaced with manufacturer's specified parts to prevent shock ,fire or other hazards .Do not modify the original design without permission of manufacturer.

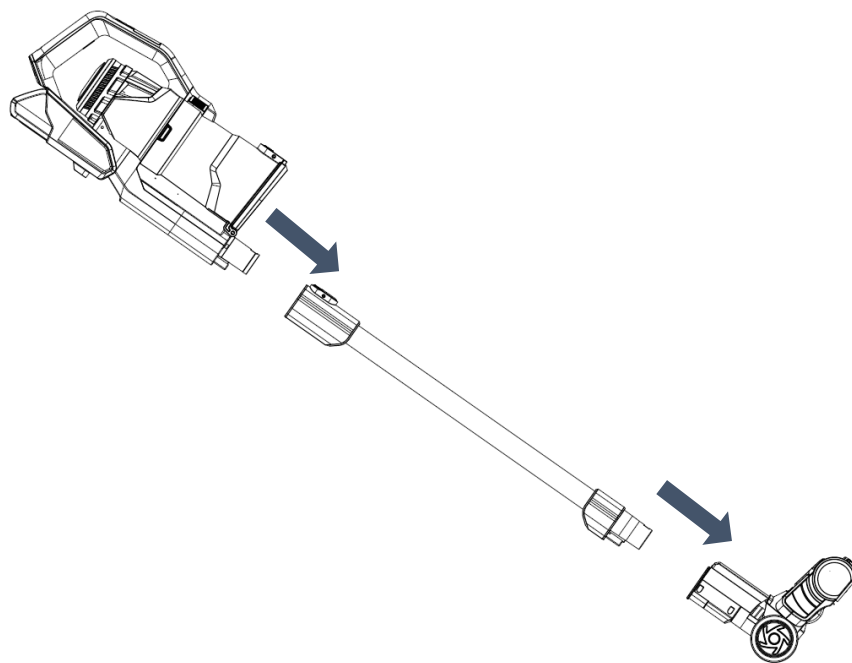
## PRODUCT

### 1. Model



### 2. Operation Methods

1. Align metal tube set with the electric brush, and insert it until you hear a “click” sound.
2. Align body set with the metal tube, and insert it until you hear a “click” sound.

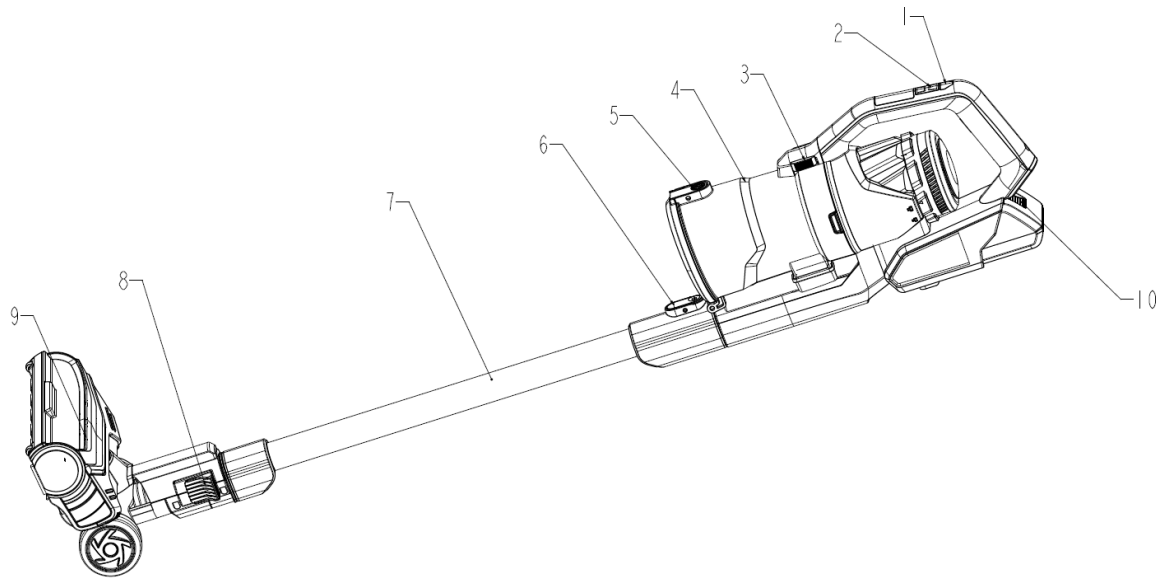


**\* Note: Different models may have different methods of assemble, please refer to the instruction manual for specific models.**

## **SERVICE**

## 1. System Diagram

### 1.1 Components



- [1] Power Button
- [2] 2-stage Power Adjustment Button
- [3] cup Release Button
- [4] Dust Cup
- [5] Release Button for Dust Empty
- [10] Release Button for battery pack

- [6] Release Button for metal tube
- [7] Metal tube
- [8] Release Button for Brush
- [9] Electrical Brush

**\* Note: Different models have different components, please refer to the instruction manual for specific models.**

## 2. Maintenance

### 2.1 Tool & Measure Instrument



**1. Wrench**



**2. Hexagon Bar Wrench**



**3. Multi-meter**



**4. +/- Screw Drivers**

## **2.2 Assembly & Disassembly**

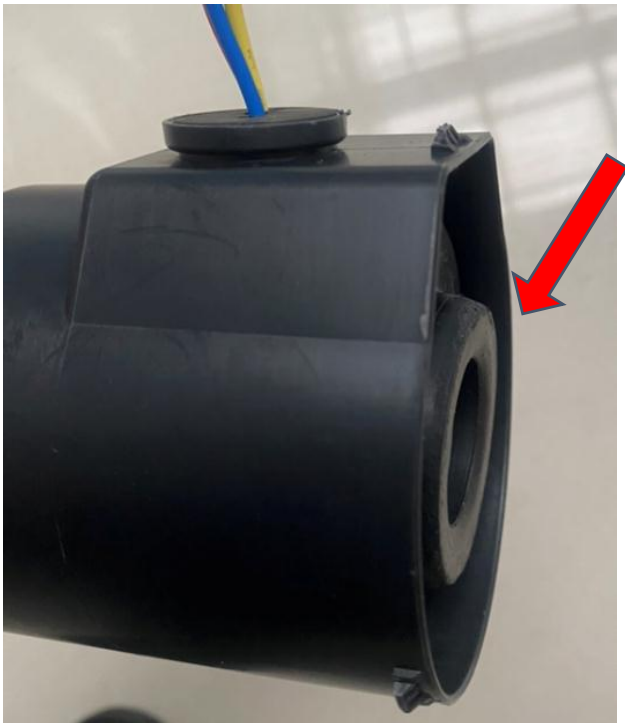
### **2.2.1 Check of Motor**

(1) Check the motor can work well with no rust on its surface.

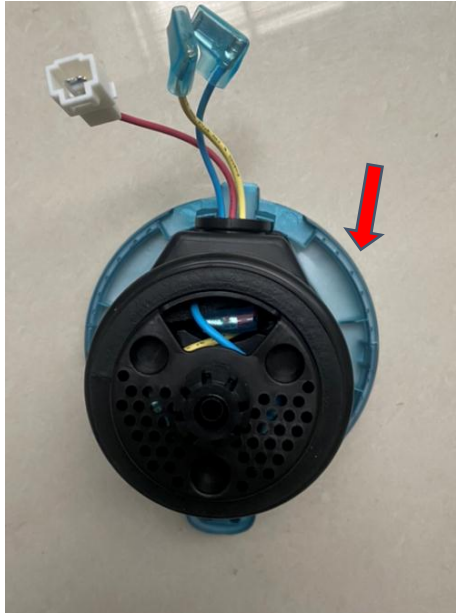


### 2.2.2 Assembly of Motor

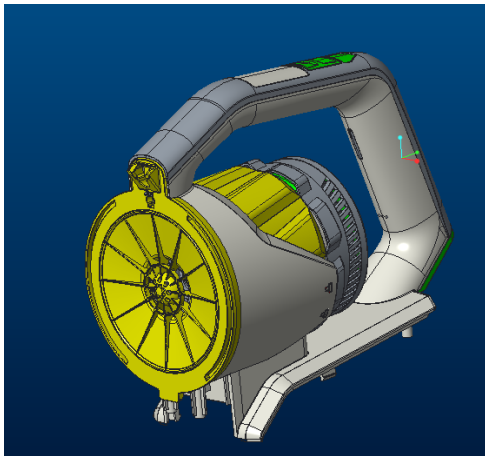
(1) Install the seal ring on the motor assembly.



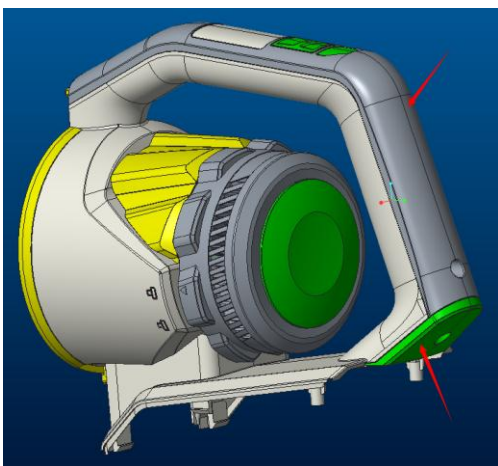
(2) Install inlet grid on the motor assembly.



(3) Combine the motor assembly and the body assembly.



(4) Install the combination inside the body assembly.



### 2.2.3 Assembly of PCB



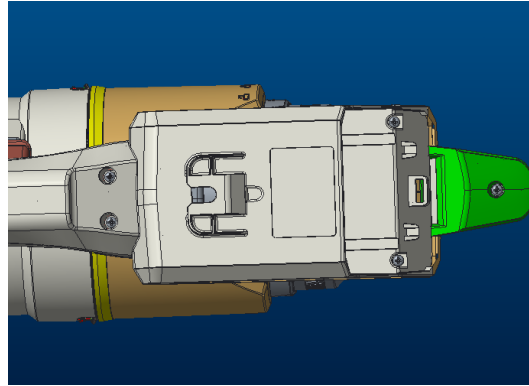
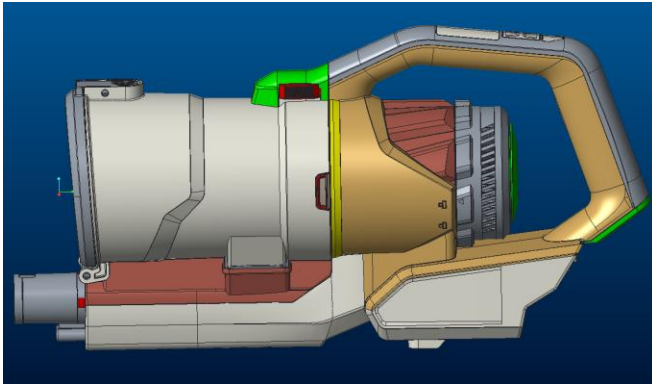
(1) Install the PCB into the battery body .



(2) Insert the terminals onto the PCB.

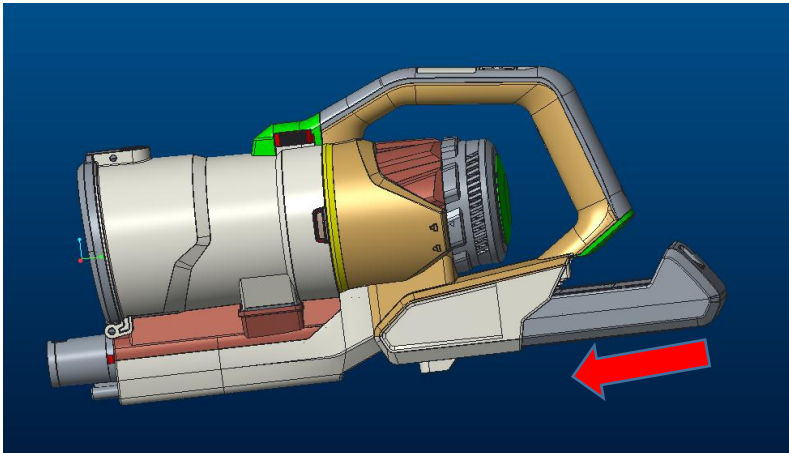


(3) Close the top body and button body together,install 4 screws.

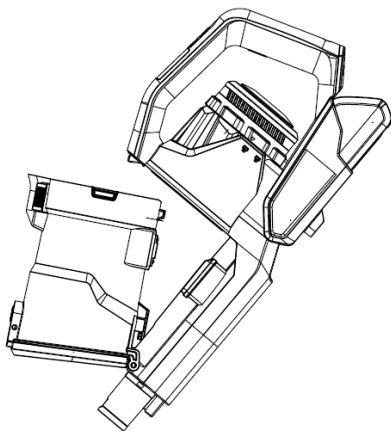


## 2.2.4 Assembly Machine Body

(1) Install the battery pack

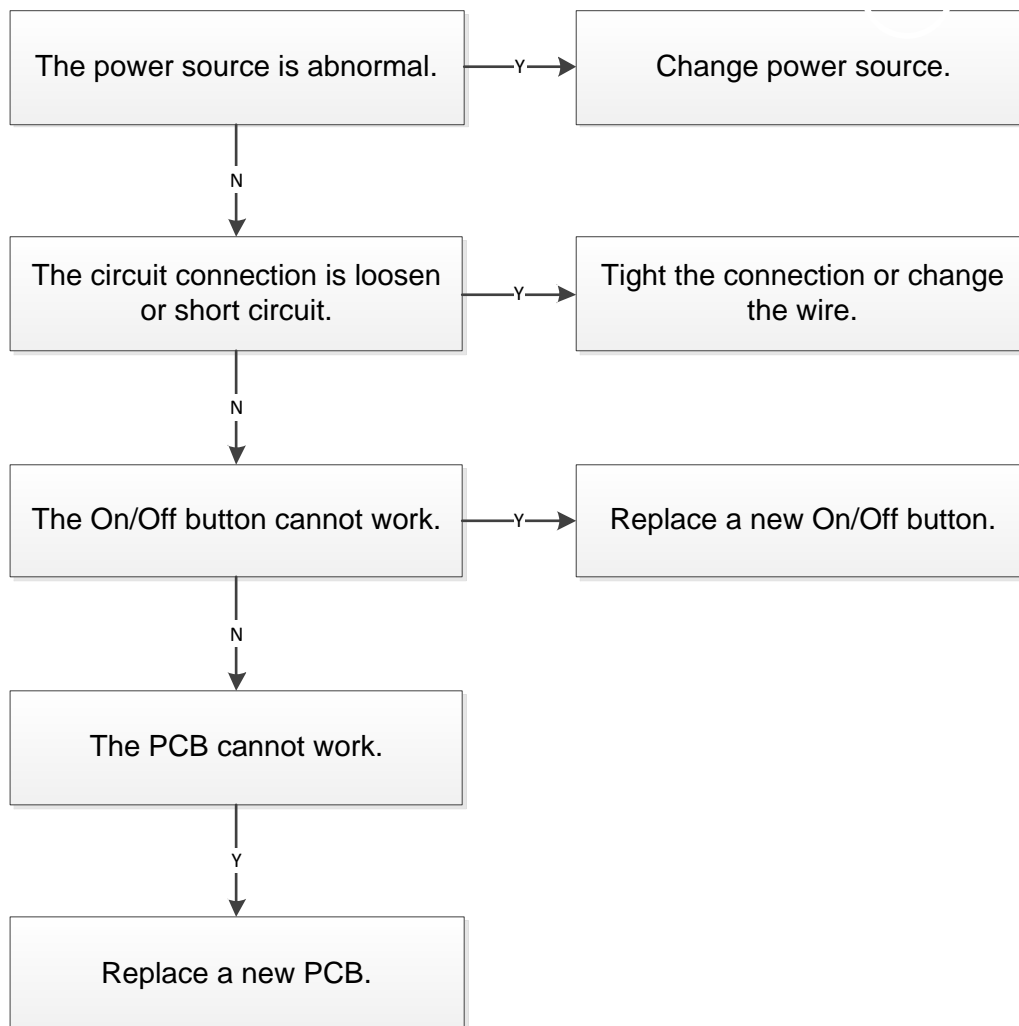


(2) Install the dust cup assembly

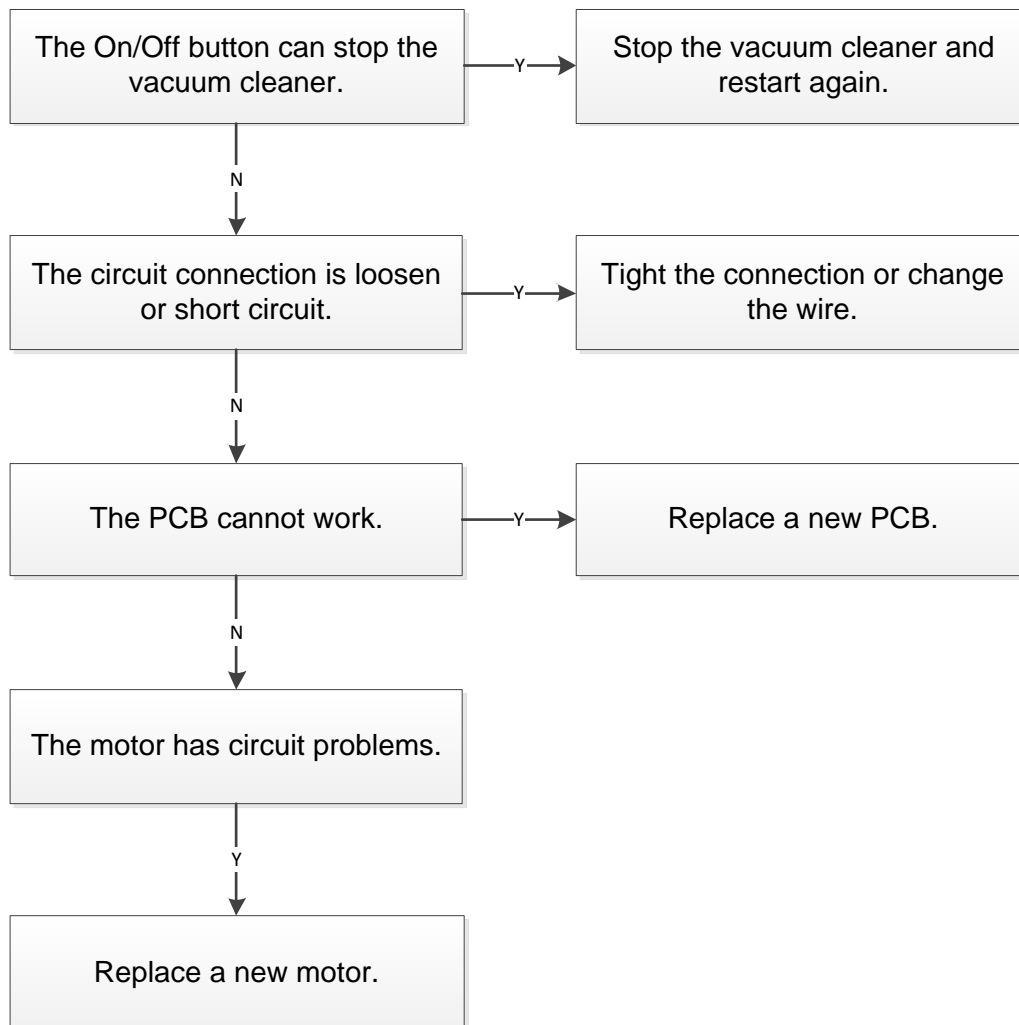


## 2.3 Error Code & Trouble Shooting

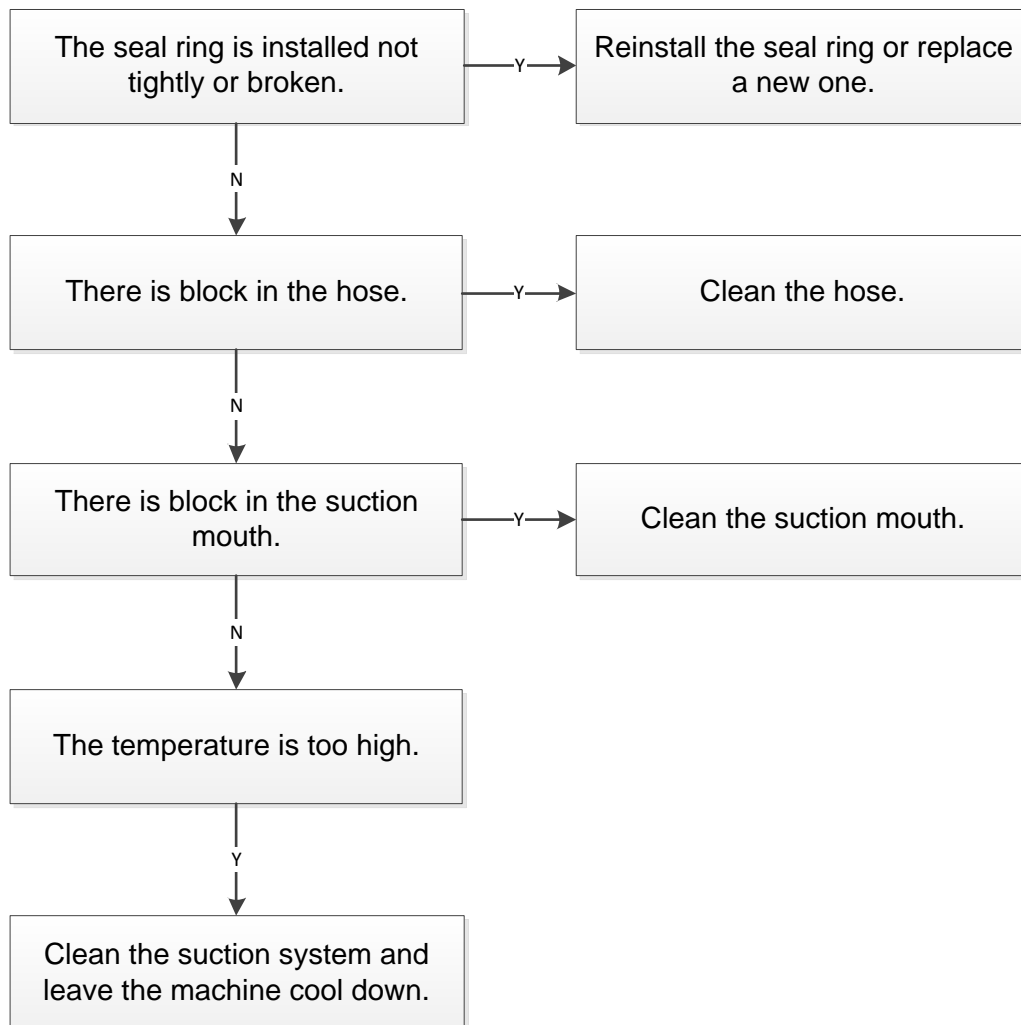
### 2.3.1 EC01: Vacuum Cleaner Cannot Work



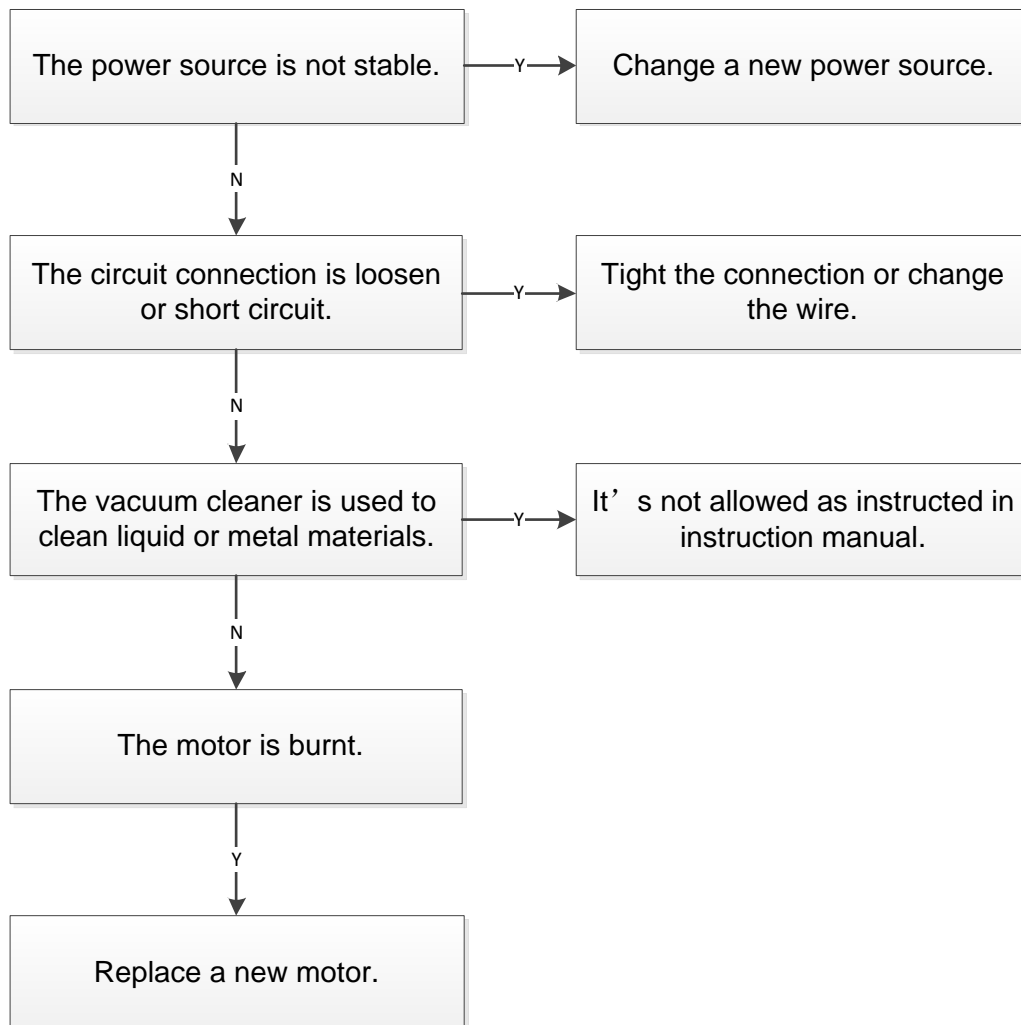
### 2.3.2 EC02: Start Directly after Plugging in



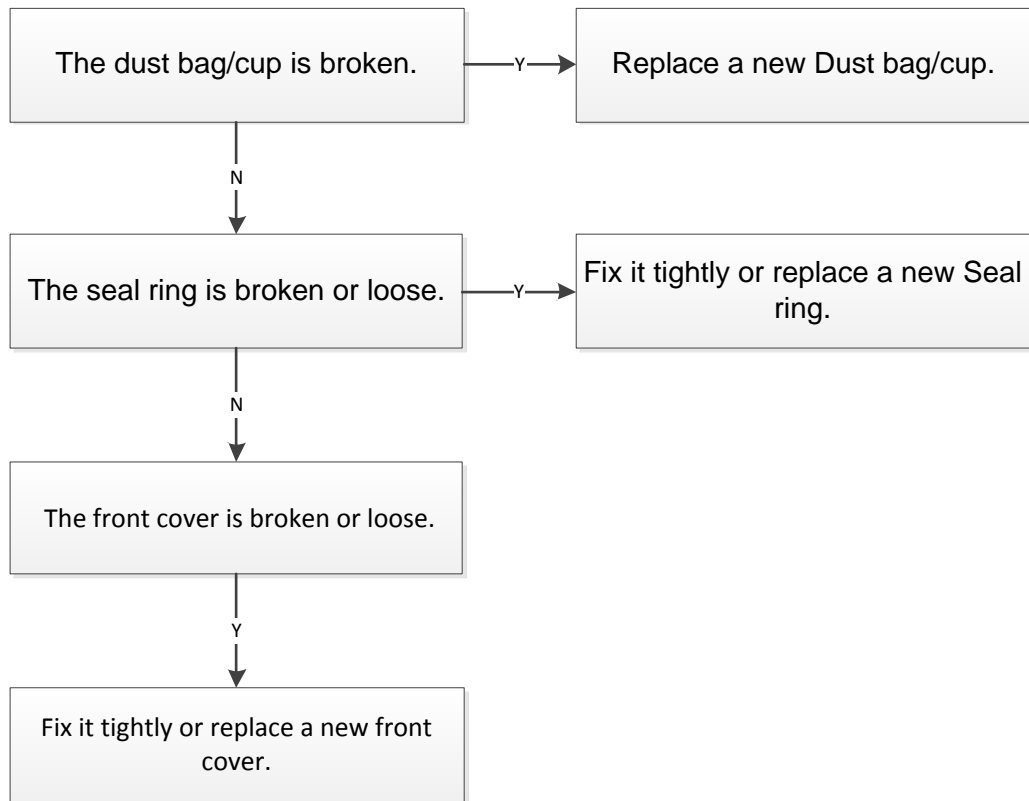
### 2.3.3 EC03: Low Suction Pressure



### 2.3.4 EC04: Smoky Motor



### 2.3.5 EC05: Dust Leakage



**\* Note: All maintenance should be done by professional engineers.**

## ATTACHED FILES LIST

**1. Exploded View**

**2. Spare Parts List**

**3. Wiring Diagram**

\* Note: The manual may update without prior notice. Please download the latest version on website: <https://tsp.midea.com>.