

**Nilfisk VT60A
Compressed Air Vacuum
Specifications**



Minimum Compressor Required	h.p.	20
Air Hose Diameter	inches	1/2
Input Supply Air	psi	90
Input Supply Air	cfm	70
Maximum Output Airflow	cfm	140
Maximum Waterlift at Control Pressure	inches	172
Air Performance	air watts	392
Tank Capacity	gallons dry bulk	15
Collection Capacity	gallons dry bulk	10
Filter Area	square inches	2215
Dimensions (L x W x H)	inches	21 1/2 x 25 1/4 x 37 1/2
Container Diameter	inches	16 1/8
Weight with Trolley	lbs	52
Sound Level	dB(A) at 6'6"	77

Instructions for Use Nilfisk Model VT 60A Compressed Air Vacuum Cleaner



CAUTION: This Nilfisk vacuum cleaner or any other vacuum cleaner is not to be used in explosion-hazardous areas, as serious injury could result.

Under no circumstances may this cleaner be used safely for the collection of hazardous or toxic materials unless equipped with a special HEPA* filter that has been installed according to written instructions from Nilfisk-Advance America.

ATTENTION EMPLOYER: Please ensure that these Instructions for Use are made available and understood by all of your employees or any other persons who may use this equipment.

To list all toxic and hazardous materials would be beyond the scope of these instructions. It is the Employer's responsibility to identify, for Employee's and others' information, hazardous or toxic materials which may be collected by this equipment. Such information must be communicated to your Employees and other potential users of this equipment.

Your new Nilfisk industrial vacuum cleaner is a precision-engineered instrument designed for exceptionally fine filtration. Ordinary vacuum cleaners do not have HEPA filters and cannot be used safely for hazardous dusts. This Nilfisk machine is safe to use as a dust collector for finely ground materials, as long as certain precautions are taken. Proper care of this cleaner is essential to the maintenance of its ultra-fine filtering capabilities.

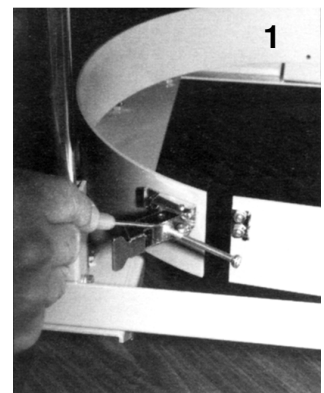
PLEASE READ THESE INSTRUCTIONS COMPLETELY BEFORE OPERATING THIS VACUUM CLEANER. IF YOU ARE PICKING UP HAZARDOUS OR ULTRA-FINE MATERIALS, BE SURE TO FOLLOW THE INSTRUCTIONS FOR "HAZMAT" AS OUTLINED BELOW.

MACHINE SETUP

Your new VT 60A vacuum cleaner is shipped with the trolley and handle assembly installed. For removal and installation of the vacuum from the trolley, please refer to the instructions below.

REMOVAL/INSTALLATION OF VACUUM FROM TROLLEY

1. Open the clamp in the back of the trolley.
2. Place the vacuum cleaner container in the trolley with the inlet facing front and center.
3. To tighten or loosen the trolley's grip on the vacuum container, adjust the silver clamp located on the back side of the trolley.
4. Open the clamp.



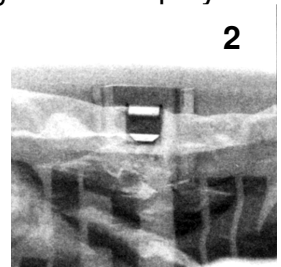
*HEPA – High Efficiency Particulate Air – Retains 99.97% of particles to 0.3 microns.

5. Loosen the lock nut at the base of the screw (photo 1).
6. Loosen the screw itself to relax the grip; tighten the screw to strengthen.
7. Once the adjustment is made, tighten the lock nut to hold the clamp in place.

CHOOSE DISPOSAL OPTION

The VT 60A offers three collection/disposal options, depending on the size and nature of the application.

1. Disposable Polyliner: For safe and convenient disposal of larger amounts of material, the vacuum cleaner container may be lined with a disposable polyliner.
 - A. Lift off the top half of the machine by unlatching the three (3) lower container clips.
 - B. Open a polyliner and insert it in the container bottom. Begin by placing the entire polyliner inside the container bottom.
 - C. Grasp the edge of the polyliner and pull it up into the clip (photo 2).
DO NOT BUNCH OR GATHER POLYLINER IN OR AROUND THE CLIP as this could affect airflow through the vertical grooves in the clip once the upper container is installed.
 - D. Take the remaining polyliner edge and stretch it over the lip of the vacuum cleaner's lower container. In order to minimize wrinkling and gathering, use only as much polyliner as necessary to secure in position.
 - E. Smooth out the polyliner against the container, leaving as little air between the two as possible.
 - F. Replace the upper container and venturi housing and fasten the container clips.
2. Direct Collection Into Tank: Material may be collected directly into the tank, in which case no preparation is necessary. This method is not recommended for hazardous material pickup, as proper disposal may not be convenient.
3. Collection Into 30 or 55-Gallon Steel Drum:
 - A. Center 01719800 ring adaptor on drum.
 - B. Un-clasp lower set of container clips on vacuum.
 - C. Lift top of vacuum (venturi head and filter chamber) off vacuum container and place in opening of ring adaptor.
 - D. Align vacuum clips with the keepers on ring adaptor and tighten.



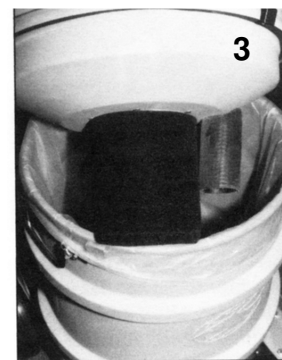
Once assembly and setup are complete, verify that the ball valve is turned to the OFF position. Connect the machine to the air supply and turn ball valve to the ON position. NOTE: For optimum performance, use at least a 20 h.p. compressor in order to supply a minimum of 70 cfm through a 1/2" airline I.D. at 90 psi.

EMPTYING

WARNING: If this vacuum cleaner is used to collect hazardous material, do not attempt to open or empty its contents without personal protective clothing and respiratory protection.

If the VT 60A loses suction power during work, there may be several reasons. The most likely reason is a full container. If the container is filled with liquid, suction will be cut off abruptly as the ball float valve closes off airflow; when the container fills with dry or damp material, suction loss is gradual as the collection bag fills with debris.

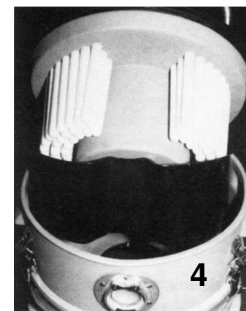
1. Before emptying:
 - A. Turn ball valve to OFF position.
 - B. Open the bottom clips and lift out the venturi/filter housing.
 - C. Check the foam impact filter covering the float valve (photo 3). If it appears caked or dirty, remove it from the float valve and shake or dust the debris off the filter into the container. If the filter is freed of clogging debris, it may be put back on the float valve. If it cannot be cleaned, replace with a new one (#017226-01 for 3-count package). **HAZMAT:** Each time the machine is emptied, remove the impact filter, dispose of it with the container contents and replace with a new filter.



2. Polyliner (Dry Collection)
 - A. Lift bag out of container and seal for disposal.
 - B. Place new bag (#017191 for 25-count package) in container according to instructions above. **HAZMAT:** Double-bag, seal and label for proper disposal.
 - C. Replace venturi/filter housing according to the instructions above.

3. Vacuum Container (Drain for Wet Collection)
 - A. Open drain valve on base of vacuum.
 - B. When vacuum has drained completely, close valve.

4. If the machine does not regain full suction power after emptying and cleaning or replacing the impact filter, check the main filter.
 - A. Turn ball valve to OFF position.
 - B. Open the top container clips by turning counterclockwise and releasing them from the keepers.
 - C. Lift off the venturi and put aside.
 - D. Pull out the main filter plate, which consists of a plate holding the polyethylene filter fingers and a splashguard.
 - E. Unscrew the nylon wing nut at the bottom of the splashguard and remove.
 - F. Separate the splashguard from the filter (photo 4) and empty, if necessary.
 - G. Examine the filter fingers.
 - H. If they are dirty or caked with debris, they may be wiped or rinsed clean.
 - I. If any are split or broken, they may be replaced individually (#017838).
 - J. After cleaning, reassemble the splashguard and filter and replace the entire filter plate in the vacuum container, making sure it is properly seated.
 - K. Replace the venturi top, close the clips and turn the ball valve to the ON position.



HAZMAT: The entire main filter and splashguard should be thoroughly cleaned during decontamination.

FILTER REPLACEMENT

To ensure that your Nilfisk vacuum cleaner delivers the years of trouble-free operation for which it was designed, it is necessary to check and replace filters regularly.

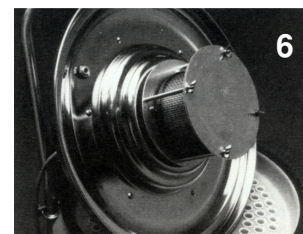
The VT 60A's internal microfilter and HEPA are located directly under the venturi housing. Turn the ball valve OFF. Open the container clips and lift off the venturi.

1. Microfilter: The microfilter is a small white felt sock (photo 5) which fits over the HEPA filter housing. This filter should be checked periodically for dirt or discoloration, and should be changed whenever it is noticeably soiled (#616821).

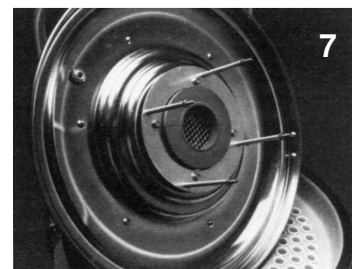


- A. Simply loosen the metal clamp band with a screwdriver and pull the microfilter off the HEPA housing.
- B. Pull the new one on, making sure to pull it up as far as it will go, covering the HEPA housing completely.
- C. Replace the metal band around the filter and tighten. NOTE: Make sure the metal band seats firmly against the underside of the motor cover. **HAZMAT:** Do not shake the microfilter since this can cause liberation of potentially harmful microscopic dust. Remove carefully and discard with collected debris in a sealable poly bag.

2. Internal HEPA Cartridge: The vacuum cleaner's internal HEPA filter (photo 6) should be changed approximately every fourth time the microfilter is changed. Exact life will depend on application, frequency of use and prefilter maintenance.

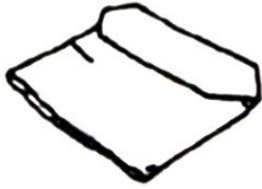


- A. Remove the microfilter by loosening its metal band and pulling it off like a sock. You will now see the cartridge in its cage-like holder.
- B. To remove the cartridge, loosen and remove the four (4) wing nuts from beneath the holder.
- C. Pull the metal plate free of the four pegs and carefully remove the filter.
- D. Remove the foam gasket. Discard both items and the microfilter with collected debris in a sealable poly bag.
- E. To install the new filter, place the new large, thick foam gasket in the recess of the filter holder (photo 7).
- F. Install the HEPA cartridge, label side out, in the holder.
- G. Replace the metal plate and secure it with the wing nuts. NOTE: Make sure the wing nuts are well tightened to provide the necessary seal.
- H. Install a new microfilter (see instructions above).
- I. Replace the venturi on the container, close the clips and turn the ball valve ON.

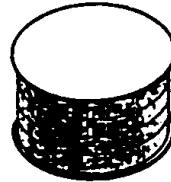


CAUTION: Use only genuine Nilfisk replacement parts and filter components. The use of substitute components could pose a grave risk of personal exposure, and will cause all equipment warranties to be void.

VT60A Accessories



Polyliners (25/Pkg.)
017191-00



HEPA Replacement Cartridge
017276-31



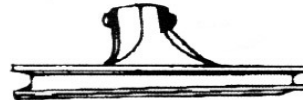
10' Plastic Hose Complete
017196-00



Double Curved Aluminum Wand
017193-00



14" Unfinished Floor Nozzle
017192-04



14" Wet Floor Nozzle
017192-00



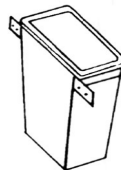
3" Aluminum Dust Brush
017194-01



11" Plastic Crevice Tool
017195-00



Ring Adaptor for standard
55 gallon drum
017198-00



Tool Box with Mounting Bracket
017851-00

WARRANTY

The Nilfisk companies warrant that Nilfisk equipment will be free of defects in workmanship or material for a period of two years from the date of delivery. Should any failure to conform to this warranty appear, the Nilfisk companies shall upon notification within such time period, correct such non-conformity, at its option, either by repairing any defective part or parts, or by replacing a part or parts provided that the equipment is returned to an authorized Nilfisk service facility. In all cases freight both ways will be at the expense of the customer. Equipment shall not be returned without advance notice to, and consent of the Nilfisk companies.

EXCEPT AS SPECIFICALLY SET FORTH HEREIN, THE NILFISK COMPANIES MAKE NO WARRANTIES, EITHER EXPRESSED OR IMPLIED AS TO ANY MATTER WHATSOEVER, INCLUDING WITHOUT LIMITATION ANY AND ALL WARRANTIES OF MERCHANTABILITY, FITNESS FOR PURPOSE, OR OTHER WARRANTIES, ALL OF WHICH ARE EXPRESSLY DISCLAIMED AND EXCLUDED. NEITHER PARTY SHALL BE LIABLE TO THE OTHER FOR SPECIAL, INDIRECT, INCIDENTAL OR CONSEQUENTIAL DAMAGES, INCLUDING BUT NOT LIMITED TO LOSS OF PRODUCTION, LOSS OF TIME, LOSS OF PROFITS OR OTHER SIMILAR INDIRECT LOSSES WHICH MIGHT OCCUR AS A RESULT OF DEFECTS, PARTIAL OR TOTAL FAILURE OF THE PRODUCT TO PERFORM AS SPECIFIED.

Correction of non-conformities or defects in the manner and for the period of time provided above, shall constitute fulfillment of all liabilities of the Nilfisk companies to the customer, whether based on contract, negligence or otherwise with respect to, or arising out of such equipment. The remedies set forth herein are exclusive, and the liability of the Nilfisk companies with respect to this sale or anything done in connection therewith, whether in contract, in tort, under any warranty, or otherwise, shall not except as expressly provided herein, exceed the price of the equipment or part on which such liability is based.

The warranty does not cover repairs due to normal wear and tear, accident, neglect, misuse or abuse, incorrect installation or use other than as described in the instruction booklet. Breaks in hoses and cables are not covered. This warranty is rendered void if the motor number plate is removed or defaced or if repairs are made or attempted by persons not authorized by the Nilfisk companies.