

S3B N1

Instructions for use

INSTRUCTIONS MANUAL
MANUEL D'INSTRUCTIONS
MANUAL DE INSTRUCCIONES

C434-US-F-E
EDITION 01/2017



EN -US English-American
F French
E Spanish

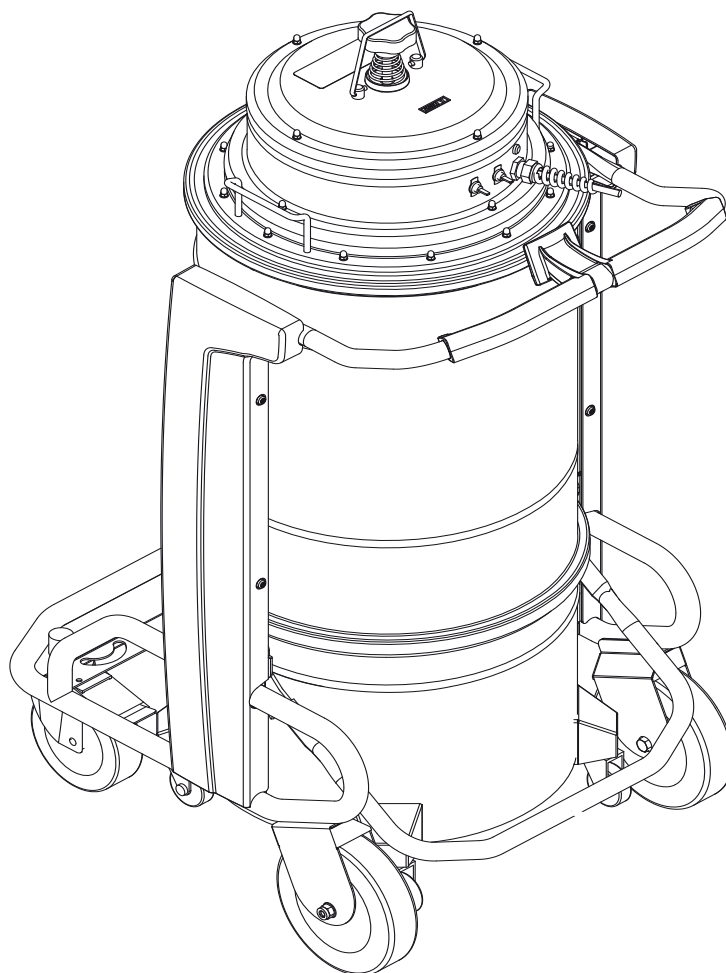


Table of contents

| | |
|--|-----------|
| Instructions for use | 2 |
| Operator's safety | 2 |
| Grounding instructions | 2 |
| Proper uses | 3 |
| General recommendations | 3 |
| Vacuum cleaner description..... | 4 |
| Vacuum Cleaner Parts and Labels..... | 4 |
| Optional kits..... | 4 |
| Packing and unpacking | 4 |
| Unpacking, moving, use and storage..... | 5 |
| Setting to work - connection to the power supply | 5 |
| Extensions..... | 5 |
| Wet and dry applications | 6 |
| Maintenance and repairs | 6 |
| Technical specifications | 7 |
| Dimensions..... | 7 |
| Controls and indicators..... | 8 |
| Inspections prior to starting | 8 |
| Starting and stopping | 8 |
| Vacuum cleaner operation..... | 8 |
| Primary filter shaker | 8 |
| Emergency stopping..... | 8 |
| Emptying the dust container | 8 |
| Poly bag | 8 |
| Liquids vacuuming..... | 8 |
| At the end of a cleaning session | 8 |
| Maintenance, cleaning and decontamination | 9 |
| Primary filter replacement | 9 |
| HEPA filter assembly or replacement | 10 |
| Tightness inspection..... | 10 |
| Disposing of the vacuum cleaner | 10 |
| Recommended spare parts | 11 |
| Troubleshooting | 12 |
| WARRANTY | 13 |

Instructions for use

Read the operating instructions and comply with the important safety recommendations identified by the word **WARNING!**

Operator's safety



! WARNING! !

Before starting the vacuum cleaner, it is absolutely essential to read these operating instructions and to keep them on hand for consultation.

The vacuum cleaner can only be used by people who are familiar with the way it works and who have been explicitly authorized and trained for the purpose. Before using the vacuum cleaner, the operators must be informed, instructed and trained on how to work it and for which substances its usage is permitted including the safe method for removing and disposing of the vacuumed material.

- Keep hair, loose clothing, fingers, and all parts of the body away from openings and moving parts.
- Turn off all controls before unplugging.
- Use extra care when cleaning stairs.
- Do not use to pick up flammable or combustible liquids such as gasoline or use in areas where they may be present.
- Do not pick up anything that is burning or smoking, such as cigarettes, matches, or hot ashes, or any hazardous dusts.
- Do not use without dust bag/or filters in place.
- Connect to a properly grounded outlet only. See grounding instructions.

SAVE THESE INSTRUCTIONS

! WARNING! !

The use of vacuum cleaner by people (including children) with limited physical and mental capacities or lacking in experience and knowledge is strictly forbidden, unless they are supervised by a person who is experienced in the use and safe handling of the machine.

Children must be supervised to make sure they will not play with the vacuum cleaner.

Grounding instructions

This appliance must be grounded. If it should malfunction or breakdown, grounding provides a path of least resistance for electric current to reduce the risk of electric shock. This appliance is equipped with a cord that has an equipment-grounding conductor and grounding plug. The plug must be inserted into an appropriate outlet that is properly installed and grounded in accordance with all local codes and ordinances.

! WARNING! !

Improper connection of the equipment-grounding conductor can result in a risk of electric shock. Check with a qualified electrician or service person if you are in the doubt as to whether the outlet is properly grounded. Do not modify the plug provided with the appliance-if it will not fit the outlet, have a proper outlet installed by a qualified electrician. Make sure that the appliance is connected to an outlet having the same configuration as the plug. No adapter should be used with this appliance. If the appliance must be reconnected for use on a different type of electric circuit, the reconnection should be made by a qualified service personnel.

IMPORTANT SAFETY INSTRUCTIONS

To reduce the risk of fire, electric shock, or injury:

- Do not leave appliance when plugged in. Unplug from outlet when not in use and before servicing.
- To reduce the risk of electrical shock, do not use outdoors or on wet surfaces.
- Do not allow this appliance to be used as a toy. This machine is for adult-use only.
- Use only as described in this manual. Use only the manufacturer's recommended attachments.
- Do not use with damaged cord or plug. If appliance is not working as it should, has been dropped, damaged, left outdoors or dropped into water, return it to a service center.
- Do not pull or carry by the cord, use cord as a handle, close a door on cord, or pull cord around sharp edges or corners. Do not run the appliance over the cord. Keep cord away from heated surfaces.
- Do not unplug by pulling on cord. To unplug, grasp the plug, not the cord.
- Do not handle plug, cord or appliance with wet hands.
- Do not put any object into the openings. Do not use with any opening blocked; keep free from dust, lint, hair, and anything that may reduce airflow.

US

General information for using the vacuum cleaner

Use the vacuum cleaner in accordance with the laws in force in the country where it is used.

Besides the operating instructions and the laws in force in the country where the vacuum cleaner is used, the technical regulations for ensuring safe and correct operation must also be observed.

Do not perform any operation that could jeopardize the safety of people, property and the environment.

Comply with the safety indications and prescriptions in this instruction manual.

Proper uses

This vacuum cleaner is suitable for commercial use, in hotels, schools, hospitals, factories, shops, offices and apartment buildings for example, for hire and in any case for purposes other than normal domestic use.

This vacuum cleaner is suitable for cleaning and vacuuming solid materials in indoor and outdoor environments.

- Always leave enough room around the vacuum cleaner to reach the controls easily.

The vacuum cleaner has been designed to be used by one operator only.

This vacuum cleaner consists of an automated vacuum unit, with a filter upstream and a container for collecting the vacuumed material.

Improper Use



The following use of the vacuum cleaner is strictly forbidden:

- *Outdoors in case of atmospheric precipitation.*
- *When not placed on horizontal level ground.*
- *When the filter is not installed.*
- *When the vacuum inlet and/or hose are turned to parts of the human body.*
- *Without the cover on the vacuum unit.*
- *Without the guards, protective covers and safety systems installed by the manufacturer.*
- *When the cooling vents are partially or totally clogged.*
- *When the vacuum cleaner is covered with plastic or fabric sheets.*
- *With the air outlet partially or totally closed.*
- *When used in narrow areas where there is no fresh air.*
- *Vacuuming liquids with vacuum cleaners not equipped with specific original stopping systems.*
- *Vacuuming the following materials:*
 1. *Burning materials (embers, hot ashes, lit cigarettes, etc.).*
 2. *Open flame.*
 3. *Combustible gas.*
 4. *Flammable liquids, aggressive fuels (gasoline, solvents, acids, alkaline solutions, etc.).*
 5. *Explosive dust/substances and/or ones liable to ignite in a spontaneous way (such as magnesium or aluminium dusts, etc.).*

IMPORTANT: *Fraudulent use is not admitted.*

Versions and variations

Versions

Optional

LIQUIDS

This vacuum cleaner can be equipped with a mechanical wet shutoff.

Contact the local sales manager for pricing.

General recommendations



If an emergency situation occurs:

- *filter breakage*
- *fire outbreak*
- *short-circuit*
- *motor block*
- *electric shock*
- *etc.*

Turn the vacuum cleaner off, unplug it and request assistance from qualified personnel.



The vacuum cleaners must not be used or stored outdoors, or in damp places.

Only versions with optional equipment can be used for liquids, if not, they can only be used to vacuum dry materials.

Vacuum cleaner description

Vacuum Cleaner Parts and Labels

Figure 1

- 1. Identification plate which includes:
Code of the Model, Technical Specifications (see table on page 6), Serial No., Year of manufacture, Nominal voltage.
- 2. Dust container
- 3. Dust container release lever
- 4. Inlet
- 5. Outlet
- 6. Attention plate
Draws the operator's attention to the fact that the filter must only be shaken when the vacuum cleaner is turned off (see also par. "Primary filter shaker").
- 7. Plug for connecting the vacuum cleaner to an electrical socket.

This vacuum cleaner creates a strong air flow which is drawn in through the inlet (4 - Fig. 1) and blown out through the outlet (5 - Fig. 1).
Before turning on the vacuum cleaner, fit the vacuum hose into the inlet and then fit the required tool on to the of the hose.
The vacuum cleaner is equipped with a primary filter which enables it to be used for the majority of applications.
Besides the primary filter, which retains the most common types of dust, the vacuum cleaner can be fitted with a secondary filter (absolute) with a higher filtering capacity for fine dusts and dusts that are hazardous to health.

Optional kits

Please contact the sales personnel for information on optionals.
Instructions for installing the optional are included in the conversion kit.

! WARNING! !

Use only supplied and authorized genuine spare parts.

Accessories

Various accessories are available; refer to the manufacturer's accessory catalog.

! WARNING! !

Use only genuine accessories supplied and authorized by the manufacturer.

Packing and unpacking

Dispose of the packing materials in compliance with the laws in force.

Figure 2

| Model | S3B N1 (50 L) | S3B N1 (100 L) |
|---------------------------------|------------------|-------------------|
| A in. (mm) | 27.55 (700) | 27.55 (700) |
| B in. (mm) | 33.85 (860) | 33.85 (860) |
| C in. (mm) | 38.89 (1750) | 38.89 (1750) |
| Weight with packing lbs (kg) | 189.59 (86) | 196.21 (89) |

Unpacking, moving, use and storage

Operate on flat, horizontal surfaces.

The load-bearing capacity of the surface the vacuum cleaner is placed on must be suitable for bearing its weight.

Setting to work - connection to the power supply

WARNING!

- *Make sure there is no evident sign of damage to the vacuum cleaner before starting work.*
- *Before plugging the vacuum cleaner into the electrical mains, make sure the voltage rating indicated on the data plate corresponds to that of the electrical mains.*
- *Plug the vacuum cleaner into a socket with a correctly installed ground contact/connection.*
- *Make sure that the vacuum cleaner is turned off.*
- *The plugs and connectors of the connection cables must be protected against splashes of water.*
- *Make sure that connections to the electrical mains and plug are correct.*
- *Use the vacuum cleaners only when the cables that connect to the electrical mains are in perfect condition (damaged cables could lead to electric shocks!).*
- *Regularly check there are no signs of damage, excessive wear, cracks or aging on the electric cable.*

WARNING!

When the vacuum cleaner is operating, do not:

- *Crush, pull, damage or tread on the cable that connects to the electrical mains.*
- *Only disconnect the cable from the electrical mains by removing the plug (do not pull the cable).*
- *Only replace the electric power cable with one of the same type as the original: 12/3 SJT SP20A. The same rule applies if an extension is used.*
- *The cable must be replaced by the manufacturer's Service Centre staff or by equivalent qualified personnel.*

Extensions

If an extension cable is used, make sure it is suitable for the power input and protection degree of the vacuum cleaner.

WARNING!

Sockets, plugs, connectors and installation of the extension cable must maintain the IP protection degree of the vacuum cleaner, as indicated on the data plate.

WARNING!

Never spray water on the vacuum cleaner: this could be dangerous for persons exposed and could short circuit the power supply.

WARNING!

The vacuum cleaner's power socket must be protected by a differential circuit-breaker with surge current limitation, that shuts off the power supply when the current discharged to the ground exceeds 30 mA for 30 msec. or an equivalent protection circuit.

US

Wet and dry applications

[NOTE]

The supplied filters and the bag (if applicable) must be installed correctly.

⚠ WARNING! ⚠

Comply with the safety regulations governing the materials for which the vacuum cleaner is used.

⚠ WARNING! ⚠

If the version for liquids is used:

- *Make sure the liquid level sensor is working correctly before vacuuming liquids.*
- *If foam forms, turn off the vacuum cleaner immediately and empty the container.*
- *Warning: Switch off the vacuum cleaner immediately if foam or liquid leaks out.*
- *Regularly clean the liquid level limiting device and check to make sure that there are no signs of damage.*
- *Warning: Dirty liquid vacuumed up by the vacuum cleaner must be considered conductive.*

⚠ WARNING! ⚠

*Vacuum cleaner for liquids.
When vacuuming a mix of water and air, take care to avoid overloading the motor of the vacuum unit.*

Maintenance and repairs

⚠ WARNING! ⚠

Disconnect the vacuum cleaner from its power source before cleaning, servicing, replacing parts or converting it to another version/variant, the plug must be disconnected from the socket.

- *Carry out only the maintenance operations described in this manual.*
- *Use only original spare parts.*
- *Do not modify the vacuum cleaner in any way.*

Failure to comply with these instructions could jeopardize your safety. Moreover, such action would immediately make the warranty issued with the vacuum cleaner void.

| Technical specifications | | | |
|---|---------------------------|--------------|-------------|
| Parameter | Units | S3B N1 | |
| | | 50L | 100L |
| Voltage @ 60Hz | Volts | 120 | |
| Type of Power | No. of phases | 1 | |
| Power, max | kW | 2 | |
| Current Draw, rated | Amps | 15.80 | |
| Max vacuum | in. (mm) H ₂ O | 84.65 (2150) | |
| Airflow, max without hose and reduction | CFM (L/min) | 286 (8100) | |
| Filter Area, main | Sq. ft | 21 | |
| Filter Area, optional HEPA | Sq. ft | 25.8 | |
| Noise Level, @ 3' 3" (1 meter) | dB(A) | 75 | |
| Protection Class | IP | 43 | |
| Insulation Class Motor | Class | I | |
| Tank Capacity | Gallons/liters | 13.20 (50) | 26.40 (100) |
| Machine Inlet | Inches (mm) | 2.75 (70) | |
| Weight | lbs. | 147.7 | 154.3 |
| Filter efficiency, HEPA | MPPS tested | 99.995 (H14) | |

Dimensions

Figure 3

| Model | S3B N1 (50 L) | S3B N1 (100 L) |
|------------|------------------|-------------------|
| A in. (mm) | 31.3 (795) | 31.3 (795) |
| B in. (mm) | 23.6 (600) | 23.6 (600) |
| C in. (mm) | 50.2 (1275) | 61.8 (1570) |

■ *Storage conditions:*

T : -10°C ÷ +40°C

Humidity: 85%

■ *Operating conditions:*

Maximum altitude: 800 m

(Up to 2,000 m with reduced performances)

T : -10°C ÷ +40°C

Humidity: 85%

US

Controls and indicators

Figure 4

1. Motor start/stop switch
2. Power indicator
3. Manual filter shaker knob

Figure 5

1. Inlet

Inspections prior to starting

Prior to starting, check that:

- the filters are installed;
- all the levers are locked in place;
- the vacuum hose and tools have been correctly fitted to the inlet (1 - Fig. 5);



Do not use the vacuum cleaner if the filter is faulty.

Starting and stopping

Figure 4



Lock the castor brakes (1) before starting the vacuum cleaner.

- Toggle the switches "1" (Fig. 4) upward to "on" position to start the vacuum cleaner.
- Toggle the switches downward to "off" position to turn the vacuum cleaner off.

Vacuum cleaner operation



Consult the "Troubleshooting" chapter if faults occur.

Primary filter shaker

Depending on the quantity of dust cleaned up, shake the main filter by means of the knob "3" (Fig. 4).



Stop the vacuum cleaner before using the filter shaker. Do not shake the filter while the vacuum cleaner is on, as this could damage the filter.

Wait before restarting the vacuum cleaner, to allow the dust to settle.

Emergency stopping

Toggle all switches downward to the "off" position.

Emptying the dust container



- **Before proceeding with these operations, turn the vacuum cleaner off and disconnect the plug from the power socket.**
- **Check the class of the vacuum cleaner.**

Before emptying the container it is advisable to clean the filter (see "Primary filter shaker").

- Standard version is not suitable for vacuuming hazardous dust
 - Release the dust container (2, Fig. 1) using lever (3, Fig. 1), then remove and empty it.
 - Make sure the seal is in perfect condition and correctly positioned.
 - Place the container back in position and secure it again.

Polyliner kit

You can use the plastic bags and suppressor kit supplied by our sales company (Fig. 6).

Liquids vacuuming



Check that the vacuum cleaner is equipped with mechanical liquid shutoff.

- The filter element will be wet after liquids have been vacuumed.
- A wet filter element can quickly become clogged if the vacuum cleaner is then used to vacuum dry substances.
- For this reason, make sure that the filter element is dry or replace it with another one before using the vacuum cleaner for dry materials.

At the end of a cleaning session

- Turn the vacuum cleaner off with switches (1 - Fig. 4) and disconnect the plug from the socket.
- Wind the connection cable up and hang it on the handle and hook provided (Fig. 7).
- Empty the container as described in the "Emptying the container" paragraph.
- Clean the vacuum cleaner as described in the paragraph "Maintenance, cleaning and decontamination".
- Wash the container with clean water if aggressive substances have been vacuumed.
- Store the vacuum cleaner in a dry place, out of reach of unauthorized persons.

Maintenance, cleaning and decontamination



WARNING!

To guarantee the safety level of the vacuum cleaner, only original spare parts supplied by the manufacturer should be used.



WARNING!

The precautions described below must be taken during all maintenance operations, including cleaning and replacing the primary and absolute filters.



WARNING!

The maintenance, cleaning and decontamination operations must only be performed with the vacuum cleaner turned off and the plug disconnected from the power socket. It is absolutely forbidden to perform maintenance with the plug connected to the socket. Danger of electric shock!

- If the user is performing the maintenance operations, the vacuum cleaner must be disassembled, cleaned and overhauled as far as reasonably possible without hazards for the maintenance personnel or other people. The suitable precautions include decontamination before disassembling the vacuum cleaner, adequate filtered ventilation of the exhaust air from the room in which it is disassembled, cleaning the maintenance area and suitable personal protection.
- A check must be carried out by the manufacturer or the personnel of the same at least once a year. For example: check the air filters to find out whether the air-tightness of the vacuum cleaner has been impaired in any way and make sure the electric system operates correctly.

Primary and absolute filter disassembly and replacement



WARNING!

When the vacuum cleaner is used to vacuum substances hazardous to health, the filters become contaminated, therefore:

- *work with care and avoid spilling the vacuumed dust and/or material;*
- *place the disassembled and/or replaced filter in a sealed plastic bag;*
- *close the bag hermetically;*
- *dispose of the filter in accordance with the laws in force.*



WARNING!

Filter replacement is a serious matter. The filter must be replaced with one of identical characteristics, filtering surface and category. Otherwise the vacuum cleaner will not operate correctly.

Primary filter replacement

Figure 8

Before proceeding with these operations, turn off the vacuum cleaner and remove the plug from the power socket.

- Release the stop (1), unscrew the filter shaker knob (2).
- Release the closing band (3).
- Lift the motor head (4).
- Lift filter (5) and unscrew the filter clamp (6) on bearing ring (7).
- Unscrew cage (8) and overturn the filter, exposing coupling clamp (9).
- Release the clamps and detach the cage from the filter.
- Dispose of the filter according to the laws in force.
- Fit the new filter and secure it in the cage with special clamps. Assemble the components in the reverse order of disassembly.



WARNING!

- *Take care not to raise dust when this operation is carried out. Wear an N100 (P3) mask and other protective clothing plus protective gloves (PPE/ DPI) suited to the hazardous nature of the dust collected; refer to the laws in force.*
- *Before proceeding with these operations, turn off the vacuum cleaner and remove the plug from the power socket.*
- *Check the class of the vacuum cleaner.*



WARNING!

Filter replacement is a serious matter. The filter must be replaced with one of identical characteristics, filtering surface and category. Otherwise the vacuum cleaner will not operate correctly.



WARNING!



Reassemble with care to avoid trapping your hands between the motorhead and the filter chamber. Use gloves that provide ANSI/ISEA Level "2" protection.

US

If necessary contact the manufacturer's Service Centre.

HEPA filter assembly or replacement



WARNING!

Do not use the HEPA filter again after having removed it from the vacuum cleaner.

Figure 9

1. Vacuuming unit
2. Closing band
3. Filter shaker stop
4. Filter shaker knob
5. Washer
6. Ferrule
7. Absolute filter
8. Seal
9. Disc
10. Nut



WARNING!



Reassemble with care to avoid trapping your hands between the motorhead and the filter chamber. Use gloves that provide ANSI/ISEA Level "2" protection.

Before proceeding with these operations, turn the vacuum cleaner off and disconnect the plug from the power socket.

Assembly

1. Release the stop (3) and unscrew the filter shaker knob (4), release the closing band (2) and remove the head (1).
2. Unscrew the nut from the ferrule under the head (1), insert the washer (5), screw the ferrule (6), insert the filter (7), the gasket (8) and the disc (9), screw the nut (10), fit the head back in position and fix with the closing band (2), screw the knob (4) and lock it with the stop (3).

Replacement

1. Proceed as indicated in step 1 of the assembling procedure.
2. Unscrew the nut (10), remove the disc (9) and the gasket (8).
3. Replace the filter (7) and proceed in the reverse order to reassemble the head.

To dispose of the filter put it in a sealed plastic bag, close it hermetically and dispose of it in accordance with the laws in force.

Tightness inspection

Hoses check

Make sure the suction hoses (Fig. 10) are in a good condition and correctly fixed.

If the hoses are damaged, broken or badly connected to the unions, they must be replaced.

When sticky materials are treated, check for possible clogging along the hose, in the inlet and on the baffle plate inside the filtering chamber.

Scrape inlet (2, Fig. 10) from the outside and remove the deposited waste as indicated in the figure.

Filtering chamber tightness check

If gasket (1, Fig. 11) between container (4) and filter chamber (3) fails to guarantee a good seal:

- Loosen the four screws (2) that lock the filtering chamber (3) against the vacuum cleaner structure.
- Allow the filtering chamber (3) to lower down and tighten the screws (2) once it has reached the tightness position.

If an optimal seal cannot be obtained and the gasket is torn or cracked, etc. it must be replaced.

Disposing of the vacuum cleaner

Dispose of the vacuum cleaner in compliance with the laws in force.

- **Proper disposal (electric and electronic waste).**
(Applicable in countries providing a separate collection system)

Recommended spare parts

The following is a list of spare parts that should be kept ready at hand in order to speed up maintenance operations.

Refer to the manufacturer's spare parts catalogue when ordering spare parts.

| | Description | Model |
|---|--|------------------------|
| | | Standard |
|  | Star filter kit M class Star filter kit L class | 4081701090 40000338 |
|  | Filter ring seal | Z8 17026 |
|  | Filter chamber gasket | 40000762 |
|  | Filter clamp | Z8 18079 |
|  | Absolute filter | Z5 60357 |
|  | 120V 1000W Motor | 40000928 |
|  | Brushes (carbon) for 120V 1000W motors (2 brushes) | 40000886 |

Troubleshooting

| Problem | Cause | Remedy |
|---|---------------------------------------|--|
| The vacuum cleaner does not start | Lack of power supply | Check for power at the socket. Check the condition of the socket and the cable. Ask for assistance to be performed by a qualified manufacturer's technician. |
| The vacuum cleaner revolutions increase | Clogged primary filter | Use the filter shaker (models with manual filter shaker). Replace it if this is not sufficient. |
| | Clogged vacuum hose | Check the vacuum hose and clean it. |
| Dust leaks from the vacuum cleaner | The filter is torn | Replace it with another of identical type. |
| | Inadequate filter | Replace it with another of a suitable category and check. |
| Noisy motors | Motor brushes (carbon) worn or broken | Remove and replace the (carbon) motor brushes. |
| Electrostatic current on the vacuum cleaner | Non existent or inefficient grounding | Check all ground connections. In particular on the vacuum inlet fitting; replace the hose with an antistatic hose. |

WARRANTY

Nilfisk warrants that its equipment will be free of defects in workmanship or material for a period of two years from the date of delivery. If the vacuum fails to meet these warranty standards, Nilfisk shall, upon notification within such time period, correct such non-conformity, at its option, either by repairing any defective part or parts, or by replacing a part or parts, provided that the equipment is returned to an authorized Nilfisk service facility. In all cases freight both ways will be at expense of the customer. Equipment shall not be returned without advance notice to, and consent of Nilfisk.

EXCEPT AS SPECIFICALLY SET FORTH HEREIN, NILFISK MAKES NO WARRANTIES, EITHER EXPRESSED OR IMPLIED, AS TO ANY MATTER WHATSOEVER, INCLUDING WITHOUT LIMITATION ANY AND ALL WARRANTIES OF MERCHANTABILITY, FITNESS OF PURPOSE, OR OTHER WARRANTIES, ALL OF WHICH ARE EXPRESSLY DISCLAIMED AND EXCLUDED. NEITHER PARTY SHALL BE LIABLE TO THE OTHER FOR SPECIAL, INDIRECT, INCIDENTAL OR CONSEQUENTIAL DAMAGES, INCLUDING BUT NOT LIMITED TO LOSS OF PRODUCTION, LOSS OF PROFITS OR ANY OTHER SIMILAR INDIRECT LOSSES WHICH MIGHT OCCUR AS A RESULT OF DEFECTS, PARTIAL OR TOTAL FAILURE OF THE PRODUCT TO PERFORM AS SPECIFIED.

Correction of non-conformities or defects in the manner and for the period of time provided above, shall constitute fulfillment of all liabilities of Nilfisk to the customer, whether based on contract, negligence or otherwise with respect to, or arising out of such equipment. The remedies set forth herein are exclusive, and the liability of Nilfisk with respect to this sale or anything done in connection therewith, whether in contract, in tort, under any warranty, or otherwise, shall not, except as expressly provided herein, exceed the price of the equipment or part on which such liability is based.

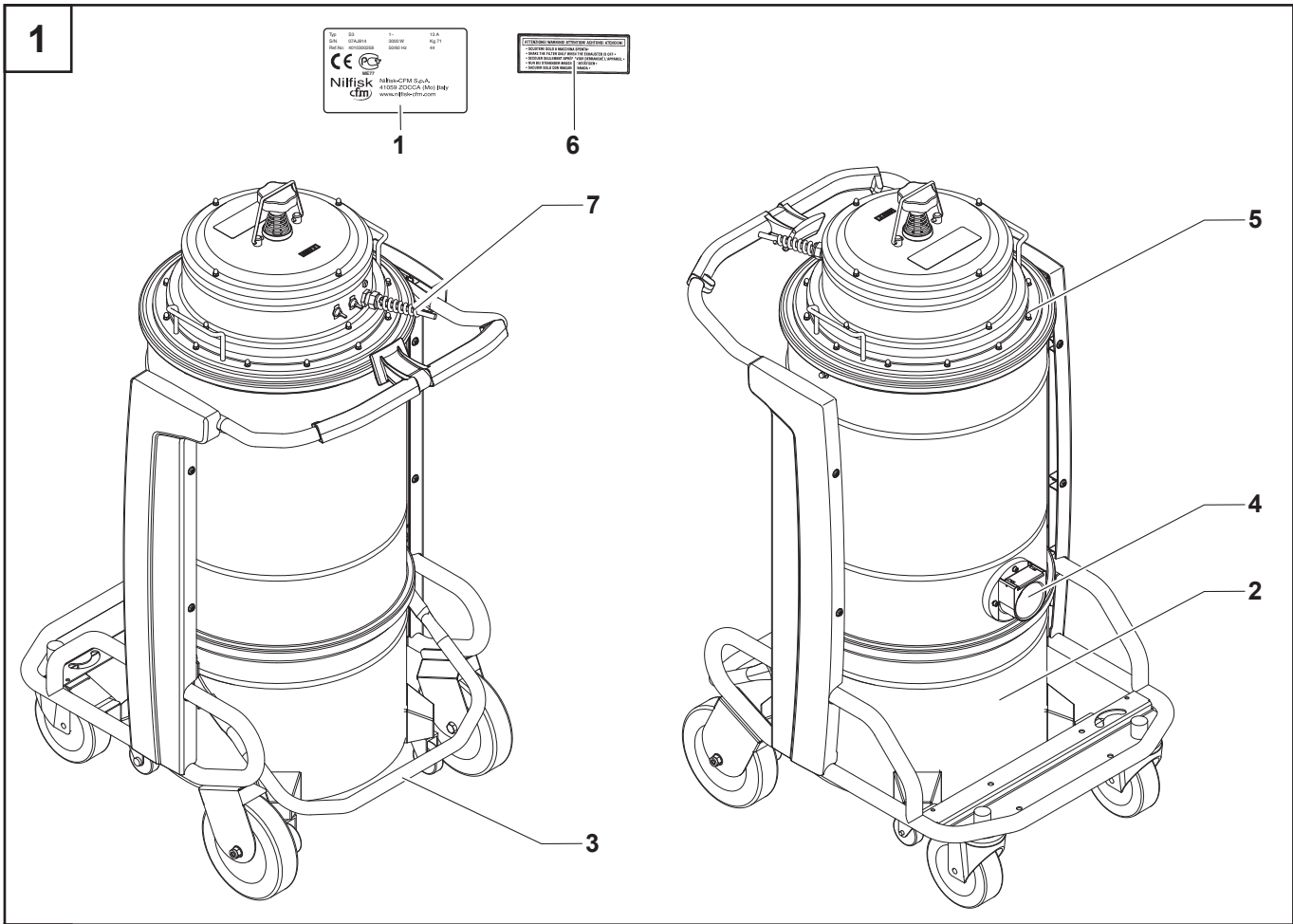
This warranty does not cover repairs due to normal wear and tear, accident, neglect, misuse or abuse, incorrect installation or use other than as described in the instruction booklet. Breaks in hoses and cables are not covered. This warranty is rendered void if the motor number plate is removed or defaced or if repairs are made or attempted by persons not authorized by Nilfisk.

Some states do not allow exclusion of implied warranties or limitations on how long an implied warranty lasts so the above exclusions or limitation of implied warranties may not apply. Some states do not allow exclusion or limitation of incidental or consequential damages so the above exclusion or limitation of incidental or consequential damages may not apply. Limited warranties set forth above give specific legal rights. Customer may have other rights which vary from state to state.

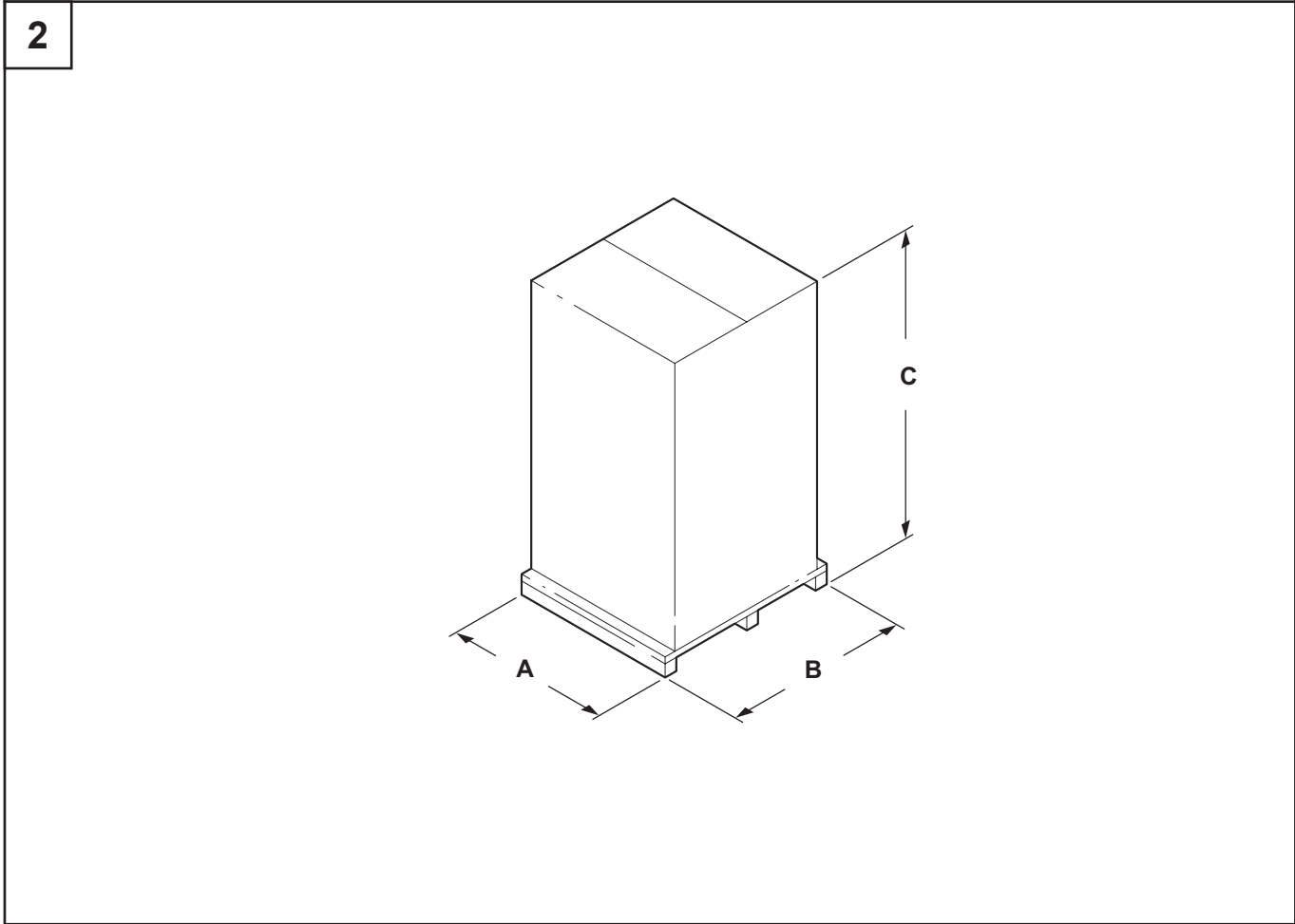
Nilfisk, Inc. 740 Hemlock Rd., Suite 100, Morgantown, PA 19543, (800)-645-3475

US

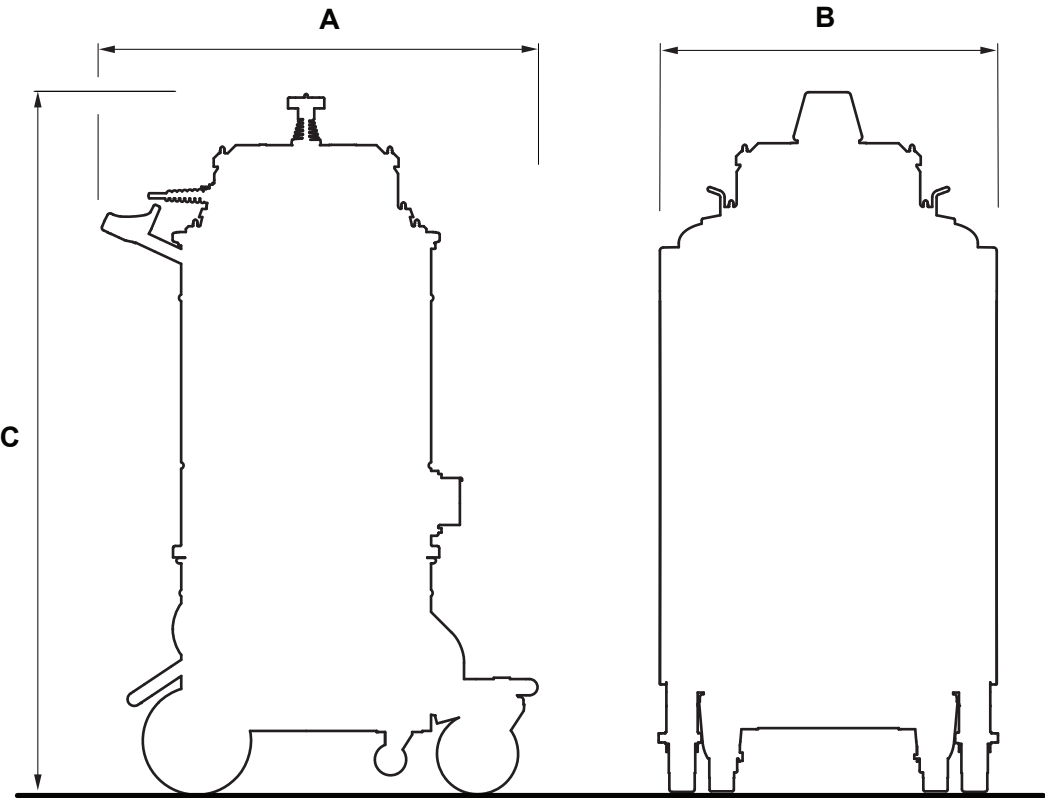
1



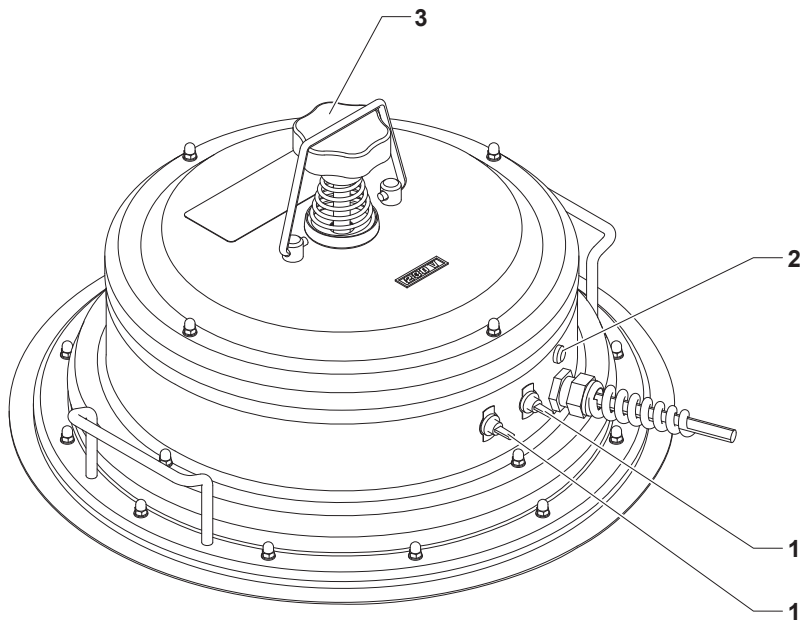
2



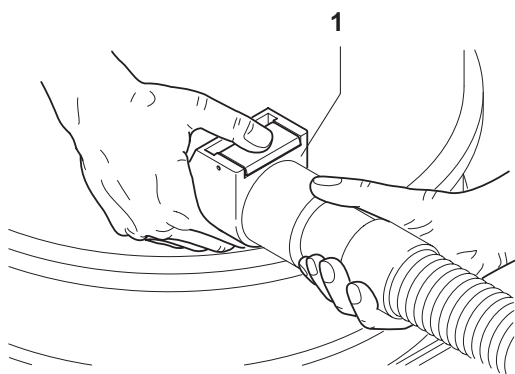
3



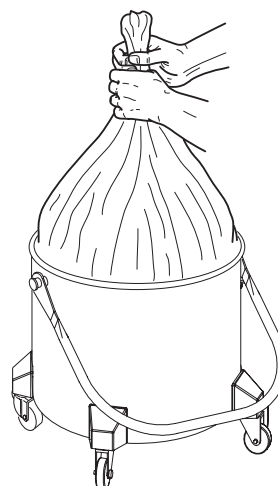
4



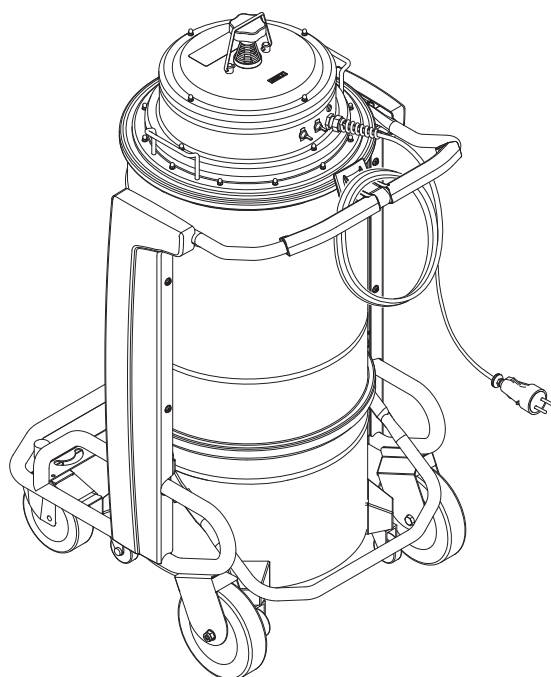
5



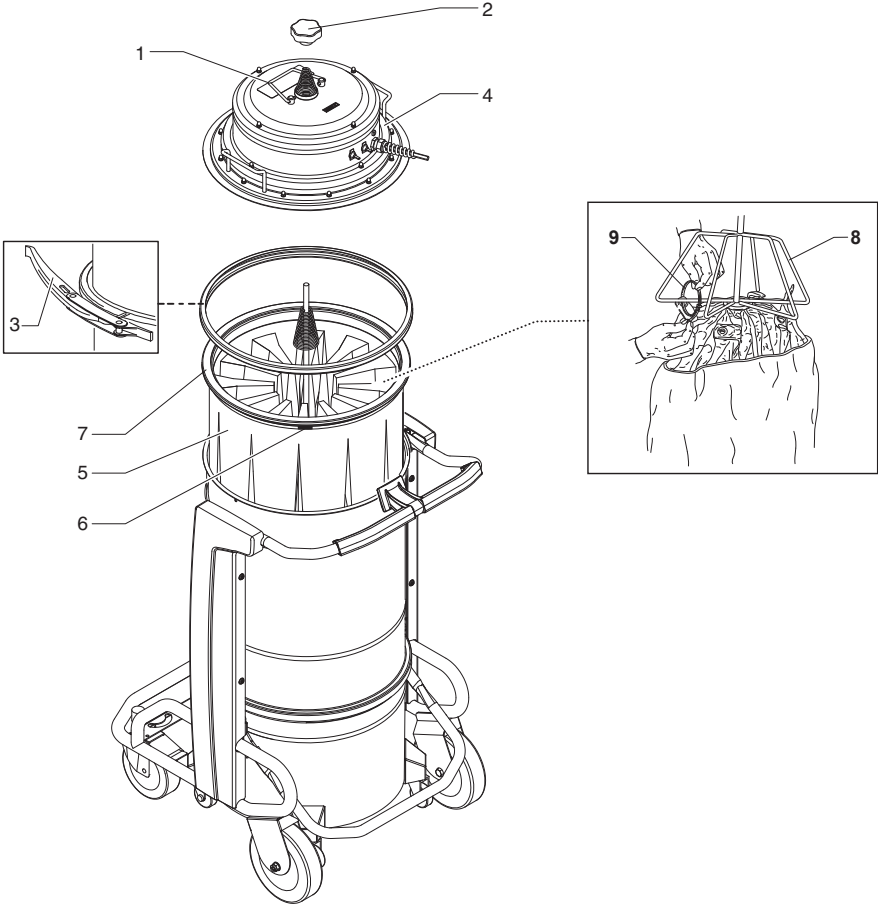
6



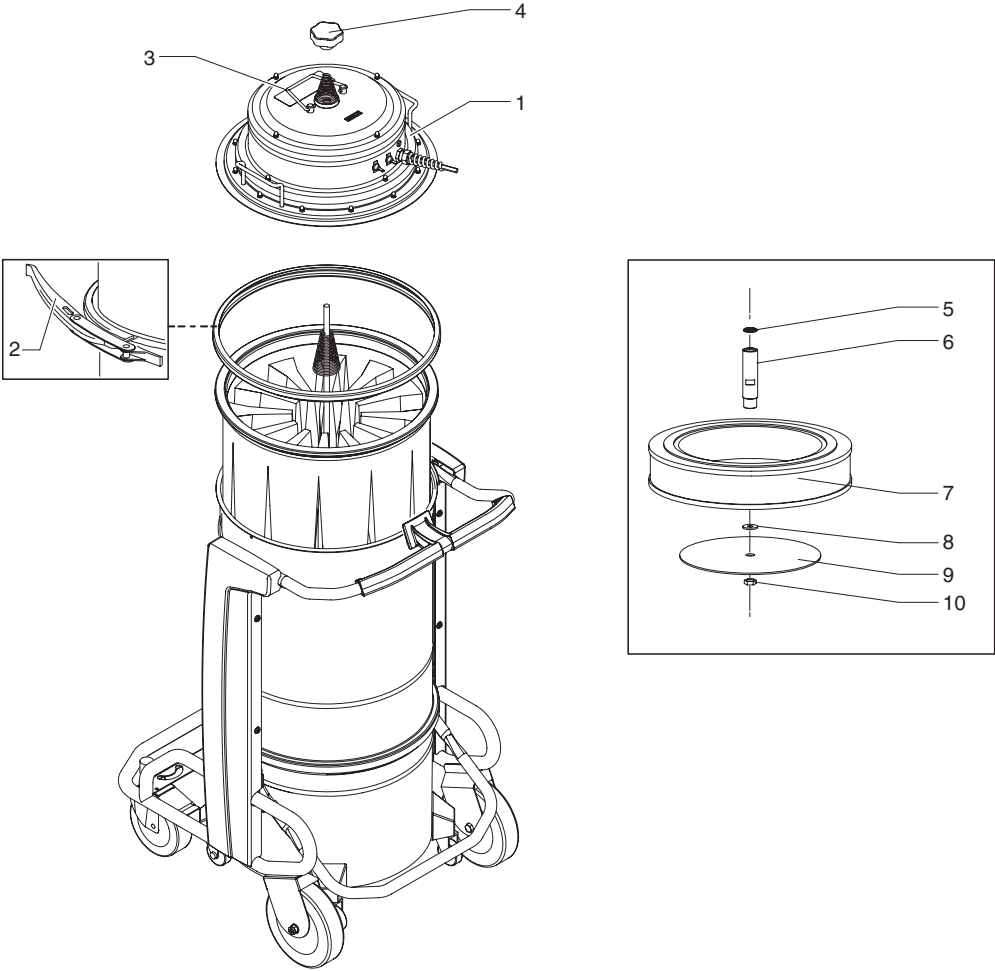
7



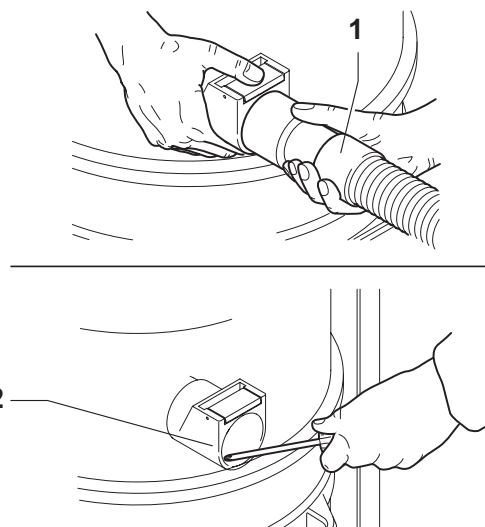
8



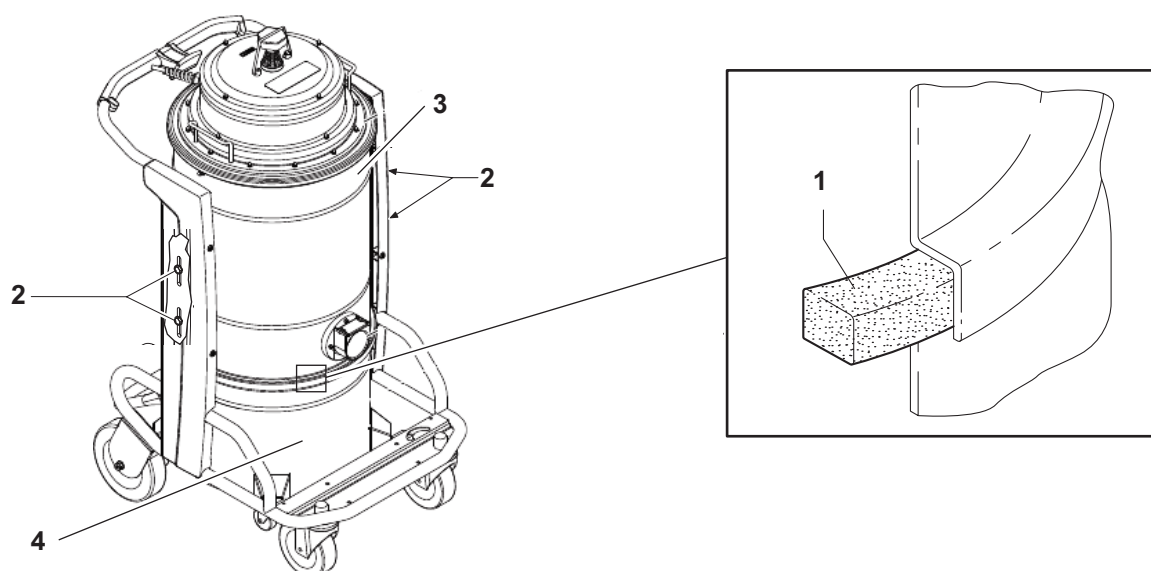
9



10



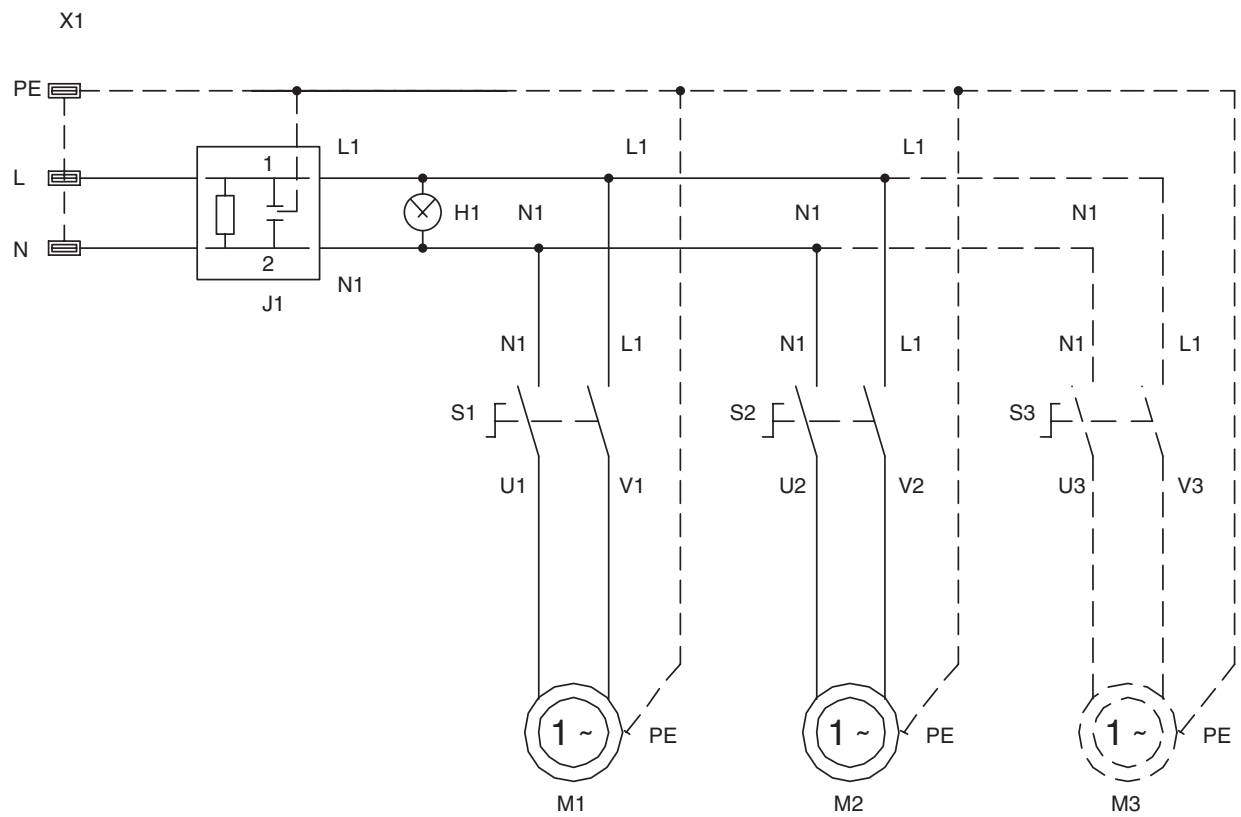
11

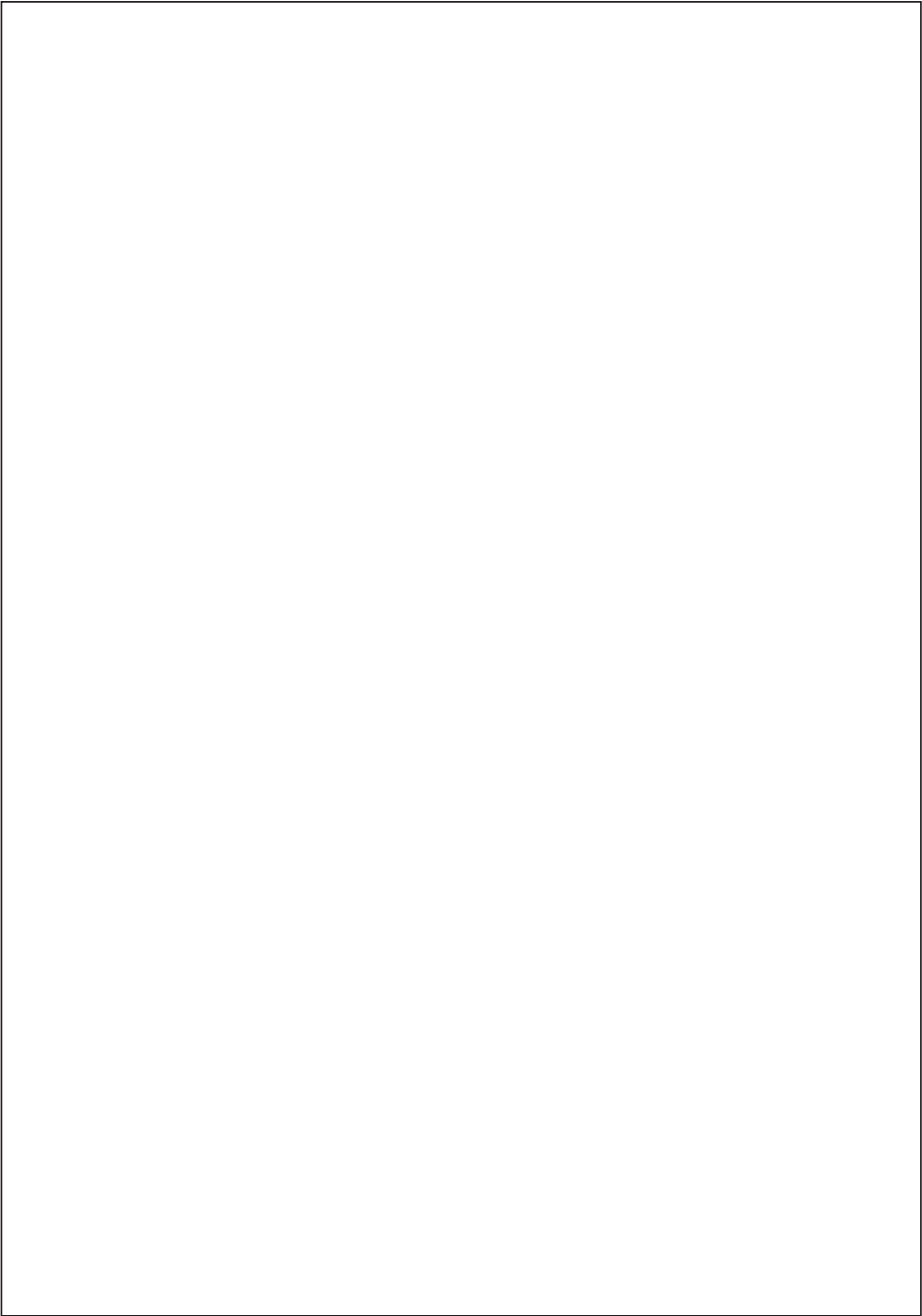


12



13





Nilfisk SpA a socio unico
Via Porrettana, 1991 - 41059 Zocca
Modena - Italy
Tel. +39 059 9730000 - Fax +39 059 9730065
industrial-vacuum@nilfisk.com
www.nilfisk.com

Nilfisk, Inc.
Industrial Vacuum Division

740 Hemlock Rd., Suite 100
Morgantown, PA 19543
Phone: (800) 645-3475
Fax: (610) 286-7350
www.nilfiskindustrialvacuums.com
questions@nilfisk.com

