

This appliance complies with European Directive 2006/95/ EC relevant to the safety of low voltage electrical material.
This appliance complies with European Directive 2004/108/EC relevant to electromagnetic interference.



ALFA



USER MANUAL

The manufacturer reserves the right to make any changes to this user manual without prior notice.

Information for users

According to Directives 2002/95/EC, 2002/96/EC and 2003/108/EC on the reduced use of hazardous substances in electrical and electronic equipment, and their disposal, the barred bin symbol means that at the end of its useful life the product must be disposed of separately from ordinary waste.



The user must therefore take such equipment to proper collection centres for electrical and electronic waste, or take it back to the dealer when he buys some equivalent equipment, in the ratio of 1:1.

A suitably differentiated waste collection, followed by recycling, treatment and environmentally friendly disposal helps prevent negative effects on health and the environment and favours the recycling of materials.

Any unauthorized equipment disposal by the user will be subject to sanctions as provided for by current local regulations.

7. Maintenance

As the appliance works with tap water, regular antiscaling treatment is necessary to ensure its long life and efficient operation. The frequency of treatment depends on the type of water and the length of use. With water of average hardness (10°-15°) and normal; domestic use, antiscaling treatment is recommended at least every three months.

To do this, proceed as follows:

- Half fill the water tank and add approx. 3 dl of white vinegar or a spoonful of descaling product.
- Close the tank and press the boiler switch (6)
- Wait until the switch indicator light goes off
- Turn off the switch
- Leave the solution to work for at least 2 hours and empty tank, then carry out two rinses with clean water.

8. Technical specifications

Generator			
Power supply	120V-60Hz		
Boiler power	1500W		
Steam pressure	400 KPa (4 bar)		
Steam temperature	150°C		
Protection rating	IPx4		
Max. power	1500W		
Boiler internal capacity	2 l		
Iron	800W	Optional	

Composition

Casing in stainless steel
Boiler in stainless steel
Pressure switch set to 4 Bar
Steam outlet control solenoid valve
Siliconed electrical wires

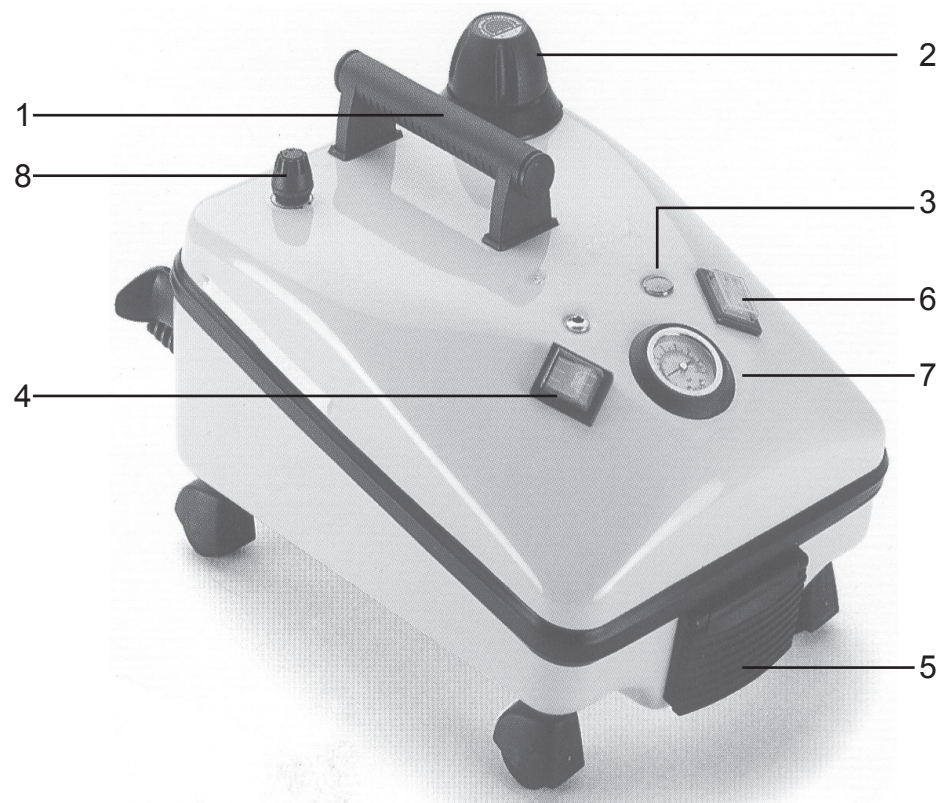
Safety

Steam pressure adjustment pressure switch
Temperature safety thermostat
Safety valve
Electrical wires protected with silicone

Index

1 Description of appliance	page 2
2 Description of accessories	page 3
3 Important safeguards	page 4
4 Getting started	page 6
5 Practical use of the accessories	page 6
6 Filling the boiler	page 7
7 Maintenance	page 8
8 Technical specifications	page 8

1. Description of the appliance



1 Carry handle

2 Pressure safety cap

3 "No water" warning light

4 Main switch

5 Monobloc socket

6 Steam switch

7 Pressure gauge

8 Steam adjustment knob

Extension tubes (11)

With these accessories, combined with the flexible tube, it is possible to clean floors, in combination with the brushes and with the other accessories, on high or hard to reach surfaces, cupboards, doors, stairs, etc. Caution: after several minutes use, these accessories can scald, therefore it is advisable to wait a few minutes before detaching them.

Triangular brush (12)

The same use as the rectangular brush, where the use of the latter is inconvenient.

Window wiper (15)

This accessory is useful for cleaning windows or smooth surfaces such as bathroom tiles, shower panels, etc.

Dress-fit (13 - 13a) + special brushes (16 - 17)

This accessory can be used individually, or in combination with the brushes 16 and 17 which fit on the Dress fit. It is used for cleaning all those areas that cannot be reached with other accessories.

This accessory is particularly recommended for removing dirt and grease from:

- joints on work surfaces, join grooves or cracks
- oven hoods or glass
- steel or enamelled sinks
- wash-basins, bathtubs, bidets, WCs, showers, taps
- doors, windows and stairs

Small triangular brush (19)

Combined with the accessoires Dress Fit Triple Jet, this special brush can reach difficult and awkward places and do a thorough job. By turning it both ways you can have a central or side/angled steam jet!

Funnel(22)

This is a useful accessory for refilling the boiler with water through the refill tank.

6. Filling the appliance with water

To refill the boiler while you are cleaning, do as follows.

- 1 Switch off the boiler switch (4).
- 2 Disconnect the power cord from the mains.
- 3 Unscrew the filling cap(2).
- 4 Wait 5 or 6 minutes and waiting for it to cool; proceed to fill with water, slowly.
- 5 Close the cap and resume cleaning work.

4. Getting started

Make sure the ALFA is not plugged in and is cool, and the pressure gauge must be on zero.

Press down the pressure relief cap and turn counter clockwise until it comes out. Place filler funnel into the tank opening and fill with 1,5 liters of clean tap water. To replace cap, press down while turning clockwise. Do not over tighten the cap. Plug the hose into the front of the unit by lifting the hinged flap on the front of the unit and pushing in the hose end until it locks into place.

Plug the power cord into a regular 110/120 grounded outlet.

Push the power on/off switch (4) and the steam on/off switch (6) into the "ON" position.

When the orange steam ready light (6) is off, the unit is ready for use.

Hold the nozzle over the sink for a few seconds, to allow any air that may be in the tank or hose to escape.

When the low water indicator light (3) comes on, you need to add water. You can adjust the steam pressure by turning the Pressure Adjustment Knob (8).

Use of the accessories

All the accessories are fitted in the same way.

Fit the required accessory on the gun of the flexible tube.

Caution! Make sure to work initially with a weak jet of steam and increase the intensity of steam according to needs, by operating the knob (8).

Rectangular brush (10)

Used to clean hard floors, or for cleaning floors or surfaces in wooden, parquet, carpets and mats. For cleaning delicate floors, it is advisable to wrap the brush with the cloth supplied or a rag, fixing it to the brush with the handy clips.

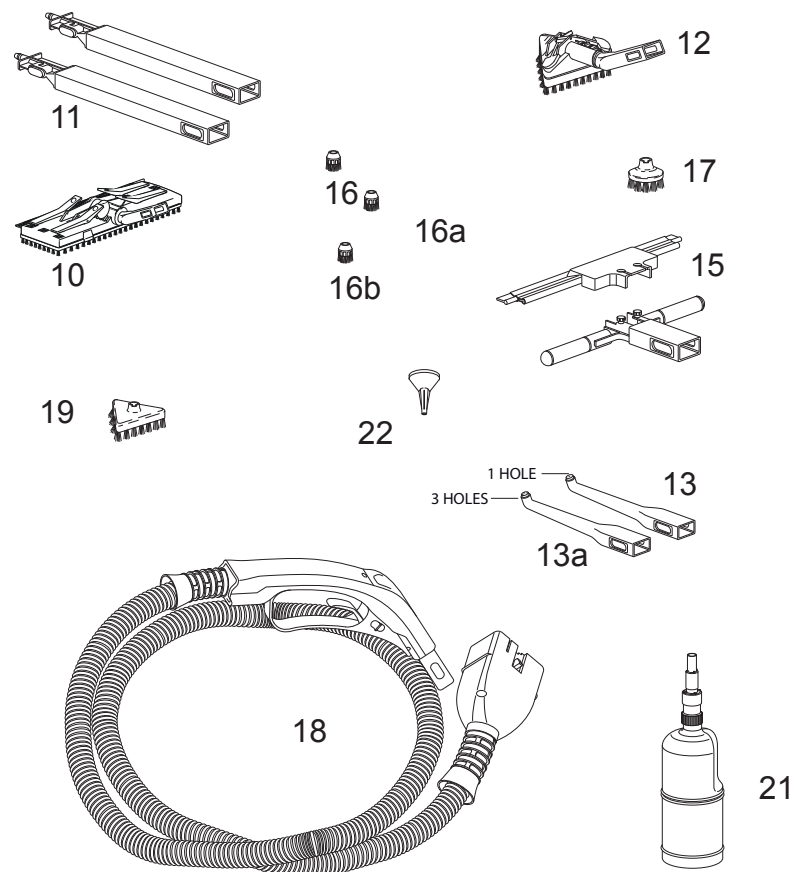
To clean carpets and mats, it is advisable to insert the bristle cover accessory for sliding on the surfaces to be treated without ruining the fibres; spray the steam carefully with a weak jet, then clean with the brush wrapped with the rag. For stubborn dirt or residuals of previously used detergents, several treatments will be necessary in order to obtain a satisfactory and even result.

For the subsequent treatment, repeat the procedure using a dry rag wrapped on the brush.

Cleaning walls and ceiling

Connect the extension tubes when necessary and fit the brush equipped with bristle cover and dry rag.

2. Description of Accessories



- | | |
|---|---|
| 10 Rectangular brush | 18 Grip unit |
| 11 Extension tubes | 19 Small triangular brush for dress-fit (nylon) |
| 12 Triangular brush | 21 Dosing bottle |
| 13 Dress fit 1 holes | 22 Funnel |
| 13a Dress fit 3 holes | |
| 15 Window wiper | |
| 16 Small round brush (nylon) | |
| 16a Small round brush (brass) | |
| 16b Small round brush (stainless steel) | |
| 17 Round brush (nylon) | |

Important: some of the described accessories may not be included in the pack, if optional.

3. IMPORTANT SAFEGUARDS

When using electrical appliances, basic safety precautions should always be followed to reduce the risk of fire, electric shock, and/or injury to persons, including the following:

1. Read all instructions and information in this instruction book and any other literature included in the carton referring to this product before operating or using this appliance.
2. Do not touch hot surfaces (i.e. steam wand). Use handles or knobs.
3. To protect against fire, electric shock, and personal injury, do not place cord, plugs, or appliance in water or other liquid.
4. This appliance must be kept out of the reach of children.
5. Unplug from outlet when not in use and before cleaning.
6. Allow to cool before putting on or taking off parts, and before cleaning the appliance.
7. The use of accessory attachments not recommended by the appliance manufacturer may result in fire, electric shock, or personal injury.
8. Do not use outdoors.
9. Do not let cord hang over edge of table or counter, or touch hot surfaces.
10. Do not place on or near a hot gas or electric burner, or in a heated oven.
11. This machine was designed to process normal household quantities only. Not suitable for continuous operation or commercial use.
12. Do not operate any appliance with a damaged cord or plug, if the appliance malfunctions, or has been damaged in any manner. Return appliance to an authorized service facility for examination, repair, or adjustment.
13. Do not use if the water tank is not filled.
14. Always use cold water. Warm water or other liquids could cause damage to the appliance.
15. When plugging in the machine, always turn appliance "OFF", attach power cord to the machine first, then plug cord into wall outlet. To disconnect, always turn appliance "OFF", then remove plug from wall outlet.
16. Use extreme caution when using hot steam.
17. Do not use appliance for other than intended use.

SAVE THESE INSTRUCTIONS

SHORT CORD INSTRUCTION

A short power supply cord is provided to reduce the risk of tripping over or becoming entangled with a longer cord.

The cord should be accessible after installation of the machine in order to disconnect it at any moment if necessary.

Longer extension cords are available at retailers authorized to sell electrical accessories, and may be utilized if care is exercised in their use. If an extension cord is used:

- The marked electrical rating of the extension cord should be at least as great as the electrical rating of the appliance.
- If the appliance plug is grounded, the extension cord should be a 3-wire grounded extension cord.
- The longer cord should be arranged so that it will not drape over the countertop or tabletop, where it may be pulled on by children or accidentally tripped over.

GROUNDING INSTRUCTIONS

This appliance must be grounded. If it should malfunction or breakdown, grounding provides a path of least resistance for electric current to reduce the risk of electric shock. This appliance is equipped with a cord having an equipment-grounding conductor and grounding plug. The plug must be inserted into an appropriate outlet that is properly installed and grounded in accordance with all local codes and ordinances.

WARNING – Improper connection of the equipment-grounding conductor can result in a risk of electric shock. Check with a qualified electrician or service person if you are in doubt as to whether the outlet is properly grounded. Do not modify the plug provided with the appliance – if it will not fit the outlet, have a proper outlet installed by a qualified electrician.

This appliance is for use on a nominal 120-volt circuit and has a grounding attachment plug that looks like the plug illustrated the Figure. Make sure that the appliance is connected to an outlet having the same configuration as the plug. No adaptor should be used with this appliance.

