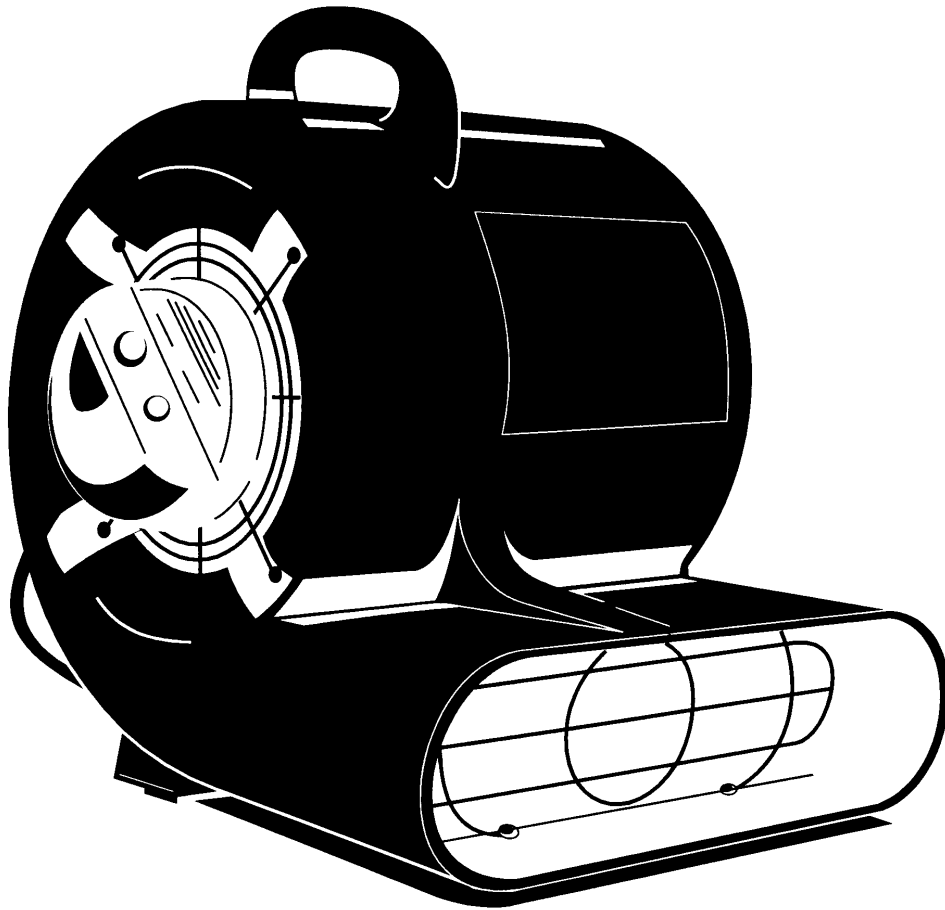


AIR MOVER MANUAL



TEMPEST™ TYPHOON™



Dry Air
TECHNOLOGY

313 North Oak Street • Burlington, WA 98233
Tel: 360.755.9176 Fax: 360.755.9236
Toll Free U.S. & Canada: 888.755.9176
info@dryairtech.com



Dry Air

TECHNOLOGY

Congratulations on your purchase of a Dry Air Technology Air Mover. Dry Air Technology Air Movers are conveniently small and extremely lightweight yet powerful enough to create airflow beyond your expectations. They have been engineered to be durable, long lasting and high performing. These air movers have been rigorously tested for heavy-duty use.

Your new unit was designed to provide the maximum performance. Please read this owner's manual carefully to insure that you get the most from your unit.

SAFETY INFORMATION

CAUTION!

Unit operates on alternating current:
110/120 volt, 60 Hz or 220/240 volt, 50 Hz

Do not operate your air mover with a cut or frayed power cord. Do not unplug your unit by pulling on its cord. Grasp the plug firmly and pull it out of the wall socket or power receptacle. The plug has a safety ground pin installed that must not be removed. If the pin is damaged or missing, have the power cord replaced at once. Visually inspect the power cord before each use. Ignoring these safety precautions may result in a fire or an electric shock.

To reduce the risk of fire or electric shock, do not use this fan with any solid state speed control device.

Never operate electrical equipment in standing water. There is a shock hazard.

Never drop the unit. Sudden and severe impact may result in damage to internal components.

Your air mover should never be operated with the safety grills removed. Personal injury may result.

Drop cloths or other loose fabrics can be drawn against the unit thereby restricting airflow. This condition may cause the unit to overheat. Keep the air inlet clear of any obstructions.

Save the shipping carton in case your air mover must be returned for repair.

This unit should never be serviced or cleaned while it is plugged into a live electrical power source.

WARNING: Ignoring these safety precautions may result in serious personal injury.

TEMPEST™ TYPHOON™

OPERATING INSTRUCTIONS

Please inspect your unit upon receipt for any freight damages. Be sure to keep all original packaging. Original packaging will help protect unit from freight damage upon return.

If you discover any damages during inspection, please contact Dry Air Technology.

The unit as packaged is ready to be put into service. If you have a 220v model, attach the appropriate plug for your region.

Inspect the unit completely for any shipping damage. Place the unit on the ground or on a very stable platform.

Plug the unit into a grounded alternating current circuit and switch the unit on.

MAINTENANCE

When turning on equipment for use, always check to make sure the unit is running properly.

When the unit is first turned on, check for excessive vibration or noise. This would indicate a major problem. If your unit is running abnormally, troubleshoot to find the cause and make any necessary adjustments or repairs. Do not allow the unit to run when problem persists. A simple adjustment problem can turn into complete motor failure if not corrected.

Warning

Disconnect the unit from the power supply before cleaning or servicing.

SPECIFICATIONS

| Model | Voltage | Motor | RPM | Speed | Amps | Max SP | Dimensions (H x L x W) | Weight |
|---------|--------------|-------|------|-------|------|--------|------------------------|--------|
| Tempest | 230V 50/60Hz | .4 HP | 1050 | 2 | 2 | 1.50 | 17" x 18.5" x 15.5" | 28 lbs |
| Tempest | 115V 60Hz | .4 HP | 1050 | 2 | 4 | 1.50 | 17" x 18.5" x 15.5" | 28 lbs |
| Typhoon | 115V 60Hz | .4 HP | 1050 | 3 | 4 | 1.50 | 17" x 18.5" x 15.5" | 28 lbs |

Wheel Size for all units is 9.5" x 9.5".



313 North Oak Street • Burlington WA 98233 USA
 Phone: 360-755-9176 Fax: 360-755-9236
 Toll Free from U.S. or Canada: 1-888-755-9176
 Email: info@dryairtech.com • www.dryairtech.com

ATTN: PRODUCT UPDATE

The new Typhoon Air Mover is now equipped with a .4 HP motor, GFCI receptacle and 15 amp breaker. The GFCI Receptacle and 15 amp breaker gives you the ability to plug one fan into another, reducing the chaos and clutter of extension cords and power cords crisscrossing the drying site. This outlet is GFCI (Ground Fault Circuit Interrupter) protected and incorporates a dedicated circuit breaker. You can plug three Typhoon Air Movers into each other on a 15 amp circuit. For your convenience a 3mm Allen Wrench is included to remove the intake grill to provide access to the blower wheel and motor.

TROUBLE SHOOTING

| Problem | Cause | Solution |
|--|--|--|
| Unit will not run. | <ol style="list-style-type: none"> 1. GFCI has tripped 2. No power to unit. 3. Switch not on. 4. Switch is faulty. 5. Faulty/broken cord or motor wire. | <ol style="list-style-type: none"> 1. Reset GFCI, it must be a properly grounded receptacle. 2-A. Check the 15 amp circuit breaker on control panel. Reset if necessary. 2-B. Check the building fuse or circuit breaker. Reset breaker or replace fuse. 3. Place in "ON" position. 4. Replace switch. 5. Perform continuity check, using volt/amp meter. Repair/replace faulty broken wire. |
| Unit runs but fan makes loud scraping noise. | <ol style="list-style-type: none"> 1. Unit has been severely jolted causing fan to rub against housing. 2. Unit has been severely jolted causing housing to deform. | <ol style="list-style-type: none"> 1. Remove motor and replace damaged motor mounts. 2. Replace fan blade. |
| Unit runs but vibrates excessively. | <ol style="list-style-type: none"> 1. Severe jolt has bent motor shaft causing unit to be out of balance. 2. Fan blade damaged. 3. Dirt build up on one side of fan blade. | <ol style="list-style-type: none"> 1. Remove and replace motor. 2. Replace blade if necessary. 3. Clean fan blade. |
| Unit runs but fan does not turn. | <ol style="list-style-type: none"> 1. Fan is jammed against housing. 2. Capacitor wire has broken/come loose, capacitor has failed. 3. Housing has been damaged such that it presses on fan blade. | <ol style="list-style-type: none"> 1. Remove motor and replace damaged motor mounts. Replace fan blade if necessary. 2. Repair/replace wires/capacitor as necessary. 3. Replace housing/unit as necessary. |
| Unit runs briefly, and then shuts off. | <ol style="list-style-type: none"> 1. Motor bearings are failing or motor has developed an internal electrical fault. 2. Intake grill and/or exhaust grill is obstructed. 3. Excessive duct length. | <ol style="list-style-type: none"> 1. Replace motor. 2. Remove obstruction. 3. Reduce the duct length to the recommended maximum. |

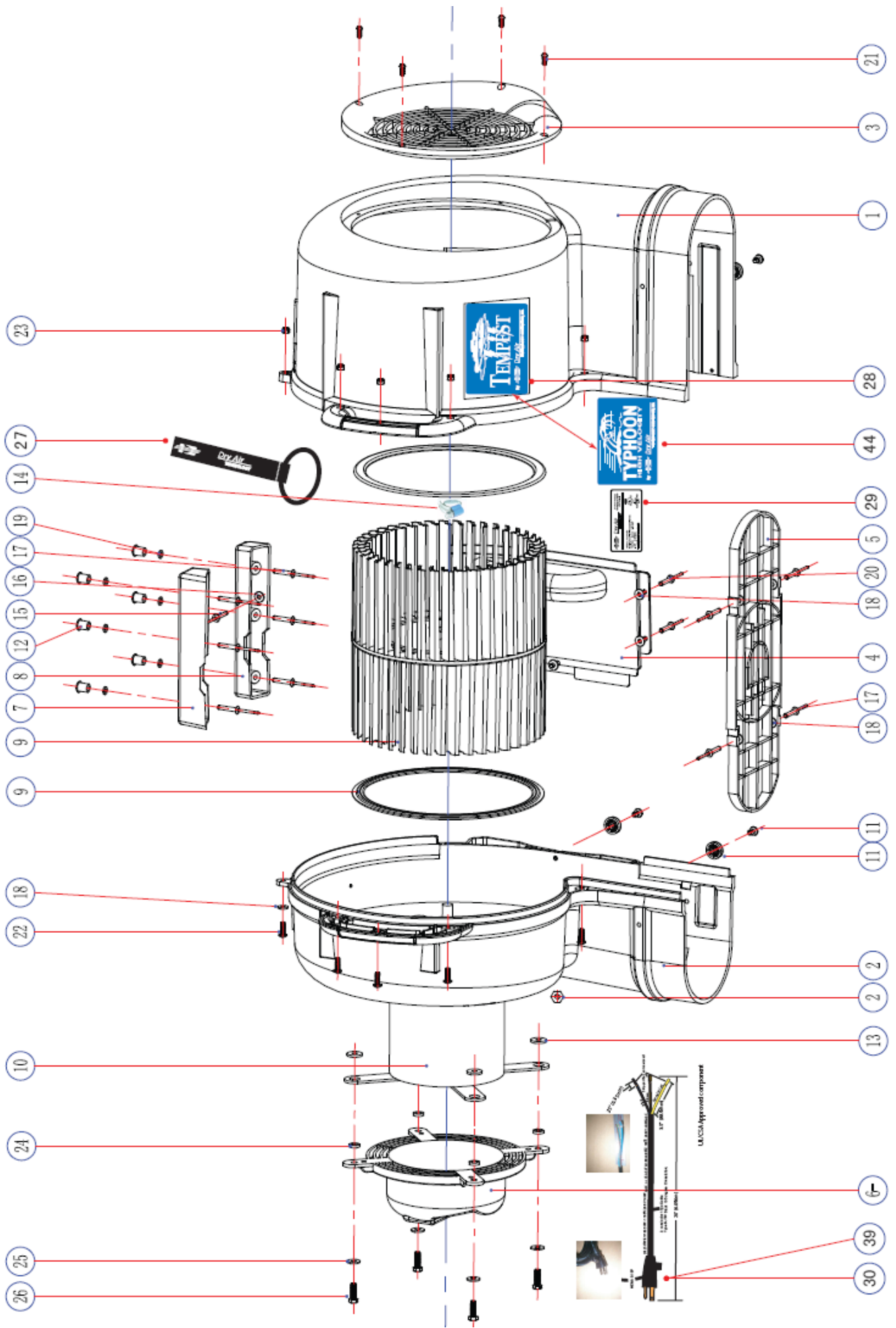
Trouble Shooting

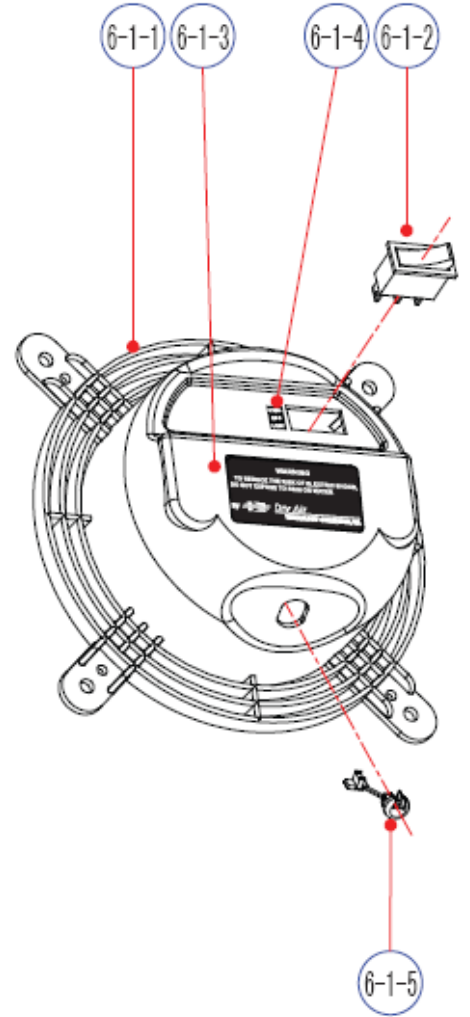
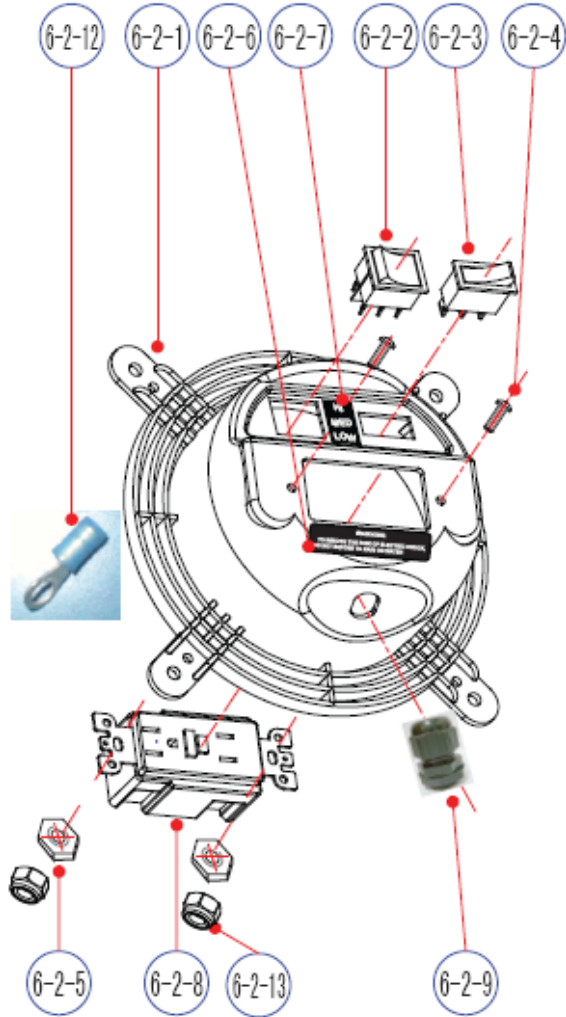
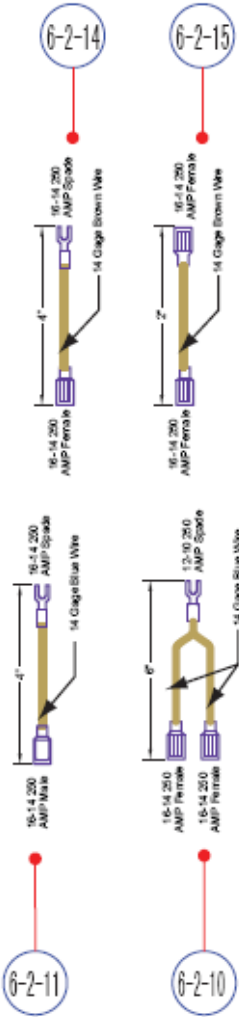
| Problem | Cause | Solution |
|--|---|--|
| Unit will not run. | <ol style="list-style-type: none"> 1. No power to unit. 2. Switch not on. 3. Switch is faulty. 4. Faulty/broken cord or motor wire. | <ol style="list-style-type: none"> 1. Plug unit in. Check circuit breaker. 2. Place in "ON" position. 3. Replace switch. 4. Perform continuity check, using volt/amp meter. Repair/replace faulty broken wire. |
| Unit runs but air mover makes loud scraping noise. | <ol style="list-style-type: none"> 1. Unit has been severely jolted causing blower wheel to rub against housing. 2. Unit has been severely jolted causing housing to deform. | <ol style="list-style-type: none"> 1. Remove motor and replace damaged motor mounts. 2. Replace blower wheel. |
| Unit runs but vibrates excessively. | <ol style="list-style-type: none"> 1. Severe jolt has bent motor shaft causing unit to be out of balance. 2. Air mover blade damaged. 3. Dirt build up on one side of air mover blade. | <ol style="list-style-type: none"> 1. Remove and replace motor. 2. Replace blade if necessary. 3. Clean air mover blade. |
| Unit runs but blower wheel does not turn. | <ol style="list-style-type: none"> 1. Blower wheel is jammed against housing. 2. Capacitor wire has broken/come loose, capacitor has failed. 3. Housing has been damaged such that it presses on blower wheel. | <ol style="list-style-type: none"> 1. Remove motor and replace damaged motor mounts. Replace blower wheel if necessary. 2. Repair/replace wires/capacitor as necessary. 3. Replace housing/unit as necessary. |
| Unit runs briefly, then shuts off on overload. | <ol style="list-style-type: none"> 1. Motor bearings are failing or motor has developed an internal electrical fault. 2. Intake grill and/or exhaust grill is obstructed. 3. Excessive duct length. | <ol style="list-style-type: none"> 1. Replace motor. 2. Remove obstruction. 3. Reduce duct length to recommended maximum. |



Dry Air
TECHNOLOGY

313 North Oak Street Burlington, WA 98233 USA
 Tel: 001-360-755-9176 Fax: 001-360-755-9236
 Toll Free U.S. & Canada: 1-888-755-9176
info@dryairtech.com





| No. | Part Number | Part Name | QTY. |
|-----|-----------------|-------------------------------|------|
| 1 | CF-00C-P4N20550 | Fan Base Left | 1 |
| 2 | CF-00C-P4N20551 | Fan Base Right | 1 |
| 2A | | Base M6 Insert Nut | 4 |
| 3 | CF-00C-P4N20552 | Primary Inlet Grill | 1 |
| 4 | CF-00C-P4N20553 | Fan Base Handle Relief | 1 |
| 5 | CF-00C-P4N20554 | Snout Grill | 1 |
| 7 | CF-00C-P4N20558 | Upper Foot Molded | 1 |
| 8 | CF-00C-P4N20559 | Lower Foot Molded | 1 |
| 9A | CF-00M-P4A10280 | Blower Wheel | 1 |
| 9B | | Blower Wheel Ring | 2 |
| 11 | GN-00C-R6N10561 | Molded Rubber Foot | 4 |
| 11 | | Plastic Foot Rivet | 4 |
| 12 | GN-00C-P6N10562 | Rubber Bumper Insert | 6 |
| 13 | GN-00F-R5B10327 | M6 Rubber Motor Mount Washer | 4 |
| 14 | CF-00F-S9NN0333 | Blower Wheel Shaft Clip | 1 |
| 15 | GN-00F-A1B10320 | M3x15 AL/AL Rivet Black | 1 |
| 16 | GN-00F-A5BN0325 | M3x8x1 Rivet Backing Washer | 1 |
| 17 | GN-00F-A5BN0321 | M5x25 AL/AL Rivet Black | 6 |
| 17 | GN-00F-A5BN0321 | M5x25 AL/AL Rivet Black | 5 |
| 18 | GN-00F-A5BN0323 | M5x12.7x1.5 AL Backing Washer | 5 |
| 18 | GN-00F-A5BN0323 | M5x12.7x1.5 AL Backing Washer | 4 |
| 18 | GN-00F-A5BN0323 | M5x12.7x1.5 AL Backing Washer | 2 |
| 19 | GN-00F-A5BN0324 | M5x9.5x1.5 AL Backing Washer | 5 |
| 20 | GN-00F-A1B10322 | M5x20 AL/AL Rivet Black | 5 |
| 21 | GN-00E-S2BN0312 | M5x15 Grill Mounting Screw | 4 |
| 22 | GN-00F-S2BN0316 | M5x16 Shell Machine Screw | 6 |
| 23 | GN-00F-S4BN0317 | M5 Shell Nylon Nut | 6 |
| 24 | CF-00F-S6BN0315 | Motor Mount Bushing | 4 |
| 25 | GN-00F-S5BN0314 | M6 Motor Mount Washer | 4 |
| 26 | GN-00F-S3BN0313 | M6 Motor Mount Machine Screw | 4 |
| 27 | GL-00C-LNNN0223 | Nylon Strap W/Loop | 1 |
| 29 | GN-00L-SANN0077 | Product Spec Label | 1 |
| 31 | AF-00L-MINN0181 | Air Mover Manual | 1 |
| 32 | CF-00P-C1N70034 | CF White Inner Box | 1 |
| 33 | CF-00P-C1NN1024 | CF Master Carton | 1 |
| 34 | AC-00P-P2N90088 | Plastic Bag | 1 |
| 35 | CF-00P-C6NN0125 | Air Mover Insert | 1 |
| 38 | CF-00L-LANN0102 | Brady Label For Box Labeling | 2 |

| No. | Part Number | Part Name | QTY. |
|--------|-------------------|---------------------------------------|------|
| 40 | GN-00F-P6A10223 | Stay Put Knob | 1 |
| 41 | GN-00F-M6BNO326 | 3mm Allen Key Tool | 1 |
| 42 | AF-00E-P2N30049 | Butt Splice Insul AMP | 1 |
| 43 | AF-00E-N2NN0080 | AMP Closed End Connector | 1 |
| 10 | CF-00M-N1A10001 | 115v 3 Speed Motor | 1 |
| | 2 SPEED Materials | | |
| 28 | CF-00L-LANNO219 | Tempest Shell Graphic | 1 |
| 30 | CF-00E-N4A10004 | 16G Fan Cord | 1 |
| 36 | CF-00L-LANNO221 | Tempest 2sp Box Sticker | 2 |
| 6-1-1 | CF-00F-P4N20555 | 2 Speed Switch Cover | 1 |
| 6-1-2 | GN-00E-P3A10254 | 2 Speed On/Off/On Switch | 1 |
| 6-1-3 | CF-00L-LANNO218 | 2 Speed Warning Label | 1 |
| 6-1-4 | CF-00L-LANNO215 | 2 Speed Switch Label | 1 |
| 6-1-5 | CF-00E-PNN10314 | 6P3-4 Black Heyco | 1 |
| | AF-00E-B2NN0029 | .250 Female conn. | 2 |
| | 3 Speed Materials | | |
| 37 | CF-00L-LANNO222 | Tempest 3sp Box Sticker | 2 |
| 39 | GN-00E-P4A10316 | 14 Gage Fan Cord | 1 |
| 44 | CF-00L-LANNO220 | 3spd Typhoon Shell Graphic | 1 |
| 6-2-1 | CF-00C-P4N20563 | 3 Speed Switch Cover | 1 |
| 6-2-2 | GN-00E-P3B10222 | 3 Speed On/On/On Switch | 1 |
| 6-2-3 | GN-00E-P1A30225 | 15AMP Rocker Breaker Switch | 1 |
| 6-2-4 | GN-00F-A2BNO330 | Fixation CFGI Screw | 2 |
| 6-2-5 | GN-00F-A4BNO332 | Fixation CFGI Nut | 2 |
| 6-2-6 | GN-00L-LANNO217 | 3 Speed Warning Label | 1 |
| 6-2-7 | CF-00L-LNNNO224 | 3 Speed Switch Label | 1 |
| 6-2-8 | AF-00E-P1A10278 | GFCI Receptacle | 1 |
| 6-2-9 | AF-00E-PNN10015 | Black Heyco | 1 |
| 6-2-10 | GN-00E-P4A60323 | #10 Spade to Female/Female AMP Jumper | 1 |
| 6-2-11 | GN-00E-P4A20320 | #10 Spade to Male AMP Jumper | 1 |
| 6-2-12 | AF-00E-N2NN0009 | AMP #10 Stud Ring | 2 |
| 6-2-13 | GN-00F-A4BNO332 | Fixation CFGI Nylon Nut | 2 |
| 6-2-14 | GN-00E-P4A60321 | Female To Spade AMP Jumper | 2 |
| 6-2-15 | GN-00E-P4A60322 | #10 Female to Female AMP Jumper | 1 |
| 6-2-16 | AF-00E-B2NN0029 | .250 Female conn. | 2 |



Dry Air
TECHNOLOGY

313 North Oak Street Burlington, WA 98233 USA
Tel: 001-360-755-9176 Fax: 001-360-755-9236
Toll Free U.S. & Canada: 1-888-755-9176
info@dryairtech.com

Return and Repair Policy

DAMAGED FREIGHT

Though it is a very rare occasion, shipping containers and/or their contents can be damaged during shipping. Open and inspect every package regardless of how the box looks. If the box is physically damaged and/or the parts are damaged, you must notate on the bill of lading that the box and/or the parts are damaged before you accept the shipment. DO NOT sign the bill of lading without notating the damage. Freight claims cannot be resolved without this notation from the recipient. If the box is fine and after opening, you see that the freight is damaged, call us immediately. We need to file a claim with the freight company.

RETURN AUTHORIZATION NUMBER (RMAs)

- Before a purchaser ships a product back to Dry Air Technology, the purchaser must obtain a valid RMA number by calling 1.888.755.9176. Boxes received without an authorized RMA number will be refused. When preparing the item for return please ensure that the RMA number is clearly visible on a label on the outer covering.
- Please have the following information ready when requesting an RMA number:
 1. Reason for return.
 2. Product (model) numbers and quantity to be returned.
 3. Serial numbers of each product.
 4. Customer name and return address.
 5. Company where product was purchased and when it was purchased.
 6. Copy of invoice and/or packing slip.

PACKAGING

Items must be returned in its original packaging. This includes the plastic sleeve the product came in, along with cardboard separators. Original packaging will help protect unit from freight damage upon return.

NON-RETURNABLE ITEMS

Items may not be returned to Dry Air Technology if items contain customer markings, stickers or damage.

The following conditions are NOT covered by our warranty and can be refused for credit or return:

1. Normal "wear and tear"
2. Improper packaging by customer causing freight damage.
3. Failure to provide a suitable operating environment
4. Use of the product for purposes other than those for which it was designed
5. Failure to monitor or operate the product in accordance with applicable seller specifications and good industry practice.
6. Unauthorized attachment, removal, or alteration of any part of the product
7. Unusual mechanical, physical, or electrical stress, scratches or dents
8. Modifications or repairs done by parties other than the seller
9. Abuse, misuse, neglect, or accidental damage

Dry Air Technology 10 Year Limited Warranty **Axial and Centrifugal Air Flow Products**

Warrantor: Dry Air Technology, 313 North Oak Street, Burlington, WA 98233. Telephone: 888-755-9176, local: 360-755-9176, fax: 360-755-9236.

Who Is Covered: This warranty extends to the original end-user of axial and centrifugal air flow devices manufactured by Dry Air Technology, and may not be assigned or transferred.

Warranty Period: The term of the warranty coverage from the date of purchase is:
10 years on the cabinet, chassis and housing
1 year on parts, labor and reasonable shipping costs, excluding filters and accessories.

Warranty Coverage: Dry Air Technology warrants that, for one year, axial and centrifugal air flow devices manufactured by Dry Air Technology will operate free from defects in material or workmanship, or Dry Air Technology, at its option, will repair or replace the defective part(s), free of charge.

Dry Air Technology further warrants that for a period of ten (10) years, the cabinet, chassis and housing of axial and centrifugal air flow devices manufactured by Dry Air Technology, will be free from defects in material or workmanship, or Dry Air Technology, at its option, will repair or replace the defective part(s), provided that all labor and shipping costs for the defective part(s) shall be borne by the end-user.

This warranty does not cover any defect, malfunction, etc. resulting from misuse, abuse, lack of normal care, corrosion from chemicals, freezing, tampering, modification, unauthorized or improper repair or operation, accident, acts of nature or any other cause beyond Dry Air Technology's reasonable control.

End-User Responsibilities: Warranty service must be performed by a firm or individual authorized by Dry Air Technology. If the end-user is unable to locate or obtain warranty service from an authorized firm or individual, he should contact Dry Air Technology at the above location, which will arrange for covered warranty service. All covered warranty service will be performed during normal business hours.

Limitations and Exclusions: If any part of a axial or centrifugal air flow device manufactured by Dry Air Technology is repaired or replaced, the new part shall be warranted only for the remainder of the original warranty period of the air flow device (but all warranties will be extended by the period of time, if any, that the Dry Air Technology air flow device is out of service while waiting for covered warranty service).

UPON THE EXPIRATION OF THE WRITTEN WARRANTY APPLICABLE TO THE DRY AIR TECHNOLOGY AIR FLOW DEVICE OR ANY PART THEREOF, ALL OTHER WARRANTIES IMPLIED BY LAW, INCLUDING MERCHANTABILITY AND FITNESS FOR A PARTICULAR PURPOSE, SHALL ALSO EXPIRE. ALL WARRANTIES MADE BY DRY AIR TECHNOLOGY ARE SET FORTH HEREIN, AND NO CLAIM MAY BE MADE AGAINST DRY AIR TECHNOLOGY BASED ON ANY ORAL WARRANTY. IN NO EVENT SHALL DRY AIR TECHNOLOGY, IN CONNECTION WITH THE SALE, OPERATION, REPAIR OR REPLACEMENT OF ANY DRY AIR TECHNOLOGY AIR FLOW DEVICE OR PART THEREOF BE LIABLE UNDER ANY LEGAL THEORY FOR ANY SPECIAL, INDIRECT OR CONSEQUENTIAL DAMAGES INCLUDING WITHOUT LIMITATION WATER DAMAGE (THE END-USER SHOULD TAKE PRECAUTIONS AGAINST SAME), LOST PROFITS, DELAY, OR LOSS OF USE OR DAMAGE TO ANY REAL OR PERSONAL PROPERTY.

Some states do not allow limitations on how long an implied warranty lasts, and some do not allow the exclusion or limitation of incidental or consequential damages, so one or both of these limitations may not apply to you.

Legal Rights: This warranty gives you specific legal rights, and you may also have other rights which vary from state to state.

DRY AIR TECHNOLOGY, BURLINGTON, WASHINGTON