



HESSAIRE DC18 Mobile Evaporative Cooler User Guide

[Home](#) » [HESSAIRE](#) » HESSAIRE DC18 Mobile Evaporative Cooler User Guide 

Contents

- 1 HESSAIRE DC18 Mobile Evaporative Cooler
- 2 General Safety Precautions
- 3 Operation Tips
- 4 Inspection
- 5 Quick Start
- 6 Battery Connection
- 7 Features
- 8 Maintenance
 - 8.1 Cleaning Cooler & Rigid Media Pad:
 - 8.2 Removal Of Back Panel:
 - 8.3 Removal Of Rigid Media:
- 9 Storage:
- 10 Troubleshooting
- 11 Cooler Parts
- 12 Hessaire Warranty
- 13 Specifications
 - 13.1 FAQ
 - 13.1.1 Q: Can I use batteries higher than 20v with this cooler?
 - 13.1.2 Q: How do I remove and clean the media pads?
 - 13.2 Documents / Resources
 - 13.2.1 References
 - 13.3 Related Posts

HESSAIRE DC18 Mobile Evaporative Cooler



USER GUIDE

General Safety Precautions

Read and follow all instructions, cautions and warnings. Failure to do so could result in personal injury, death or property damage.

Unit must be in OFF position and DISCONNECTED from power source before performing any maintenance or before REMOVING access panels.

Make sure the electrical power source conforms to the requirement of the evaporative cooler.

To reduce risk of fire or electrical shock, do not expose electrical connections to water.

Do not touch electrically live components.

Ensure all power cords do not touch sharp edges, hot surfaces or chemicals. Immediately replace damaged parts.

Do not run pump without water in the tank.

Never leave operating unit unattended.

Use only 18v or 20v rechargeable tool battery in unit.

Operation Tips

Hessaire coolers are highly recommended for outdoor use. If used indoors, position cooler in front of window or

open door for fresh intake air. Ensure there is an open door or window through which the air can exhaust from the room.

Inspection

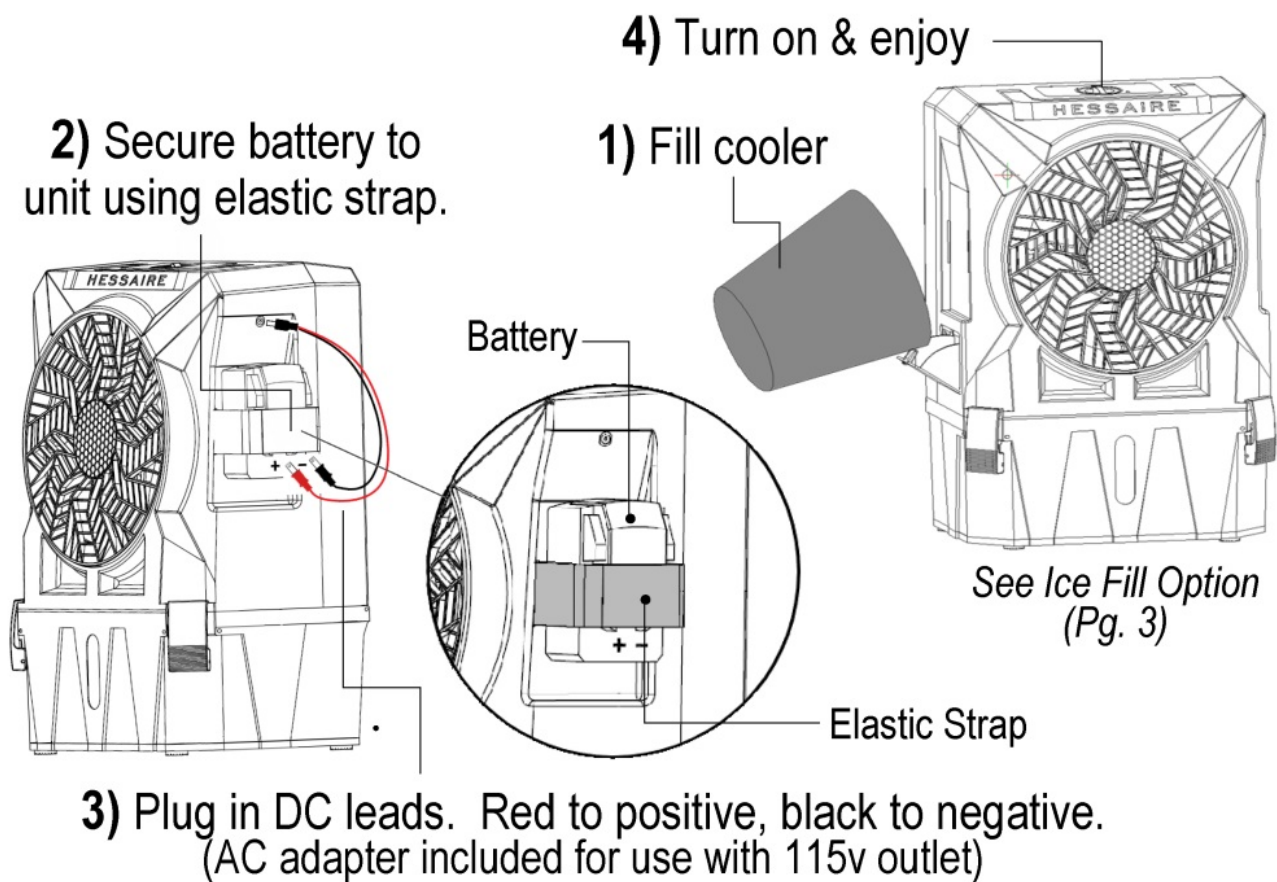
After unpacking your cooler, carefully inspect for any damage that may have occurred during transit. Inspect for loose, missing or damaged parts.

Contents: Evaporative Cooler (1), Manual (1), AC Power Adapter (1), Power Cord—Battery Connector (1)

Visit Hessaire.com to request replacement parts if any of these items are missing.

Note: Media pads may have a slight odor upon initial start up but will go away with continued use.

Quick Start

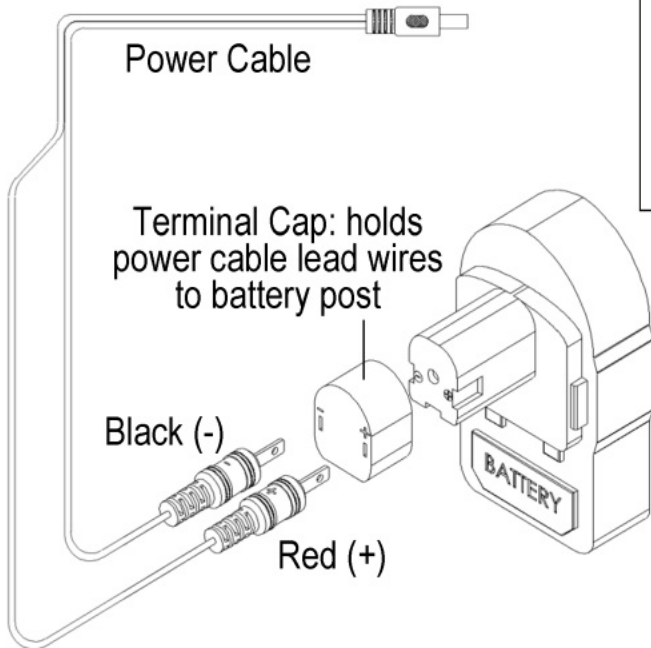


WARNING: Use only 18v or 20v tool battery (Battery not included) Using batteries higher than 20v will damage the unit.

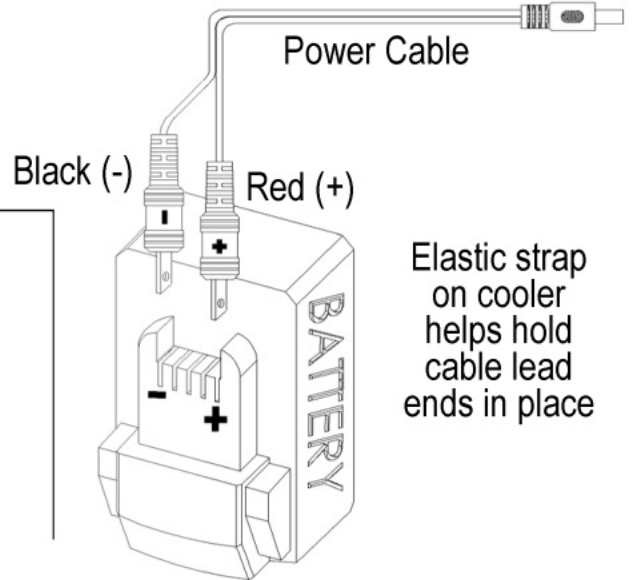
Battery Connection

DC cable connection ends fit all major brand 18v or 20v batteries. Ensure adequate contact is established between connector ends and battery. Connect red end to positive and black end to negative on battery. See Below.

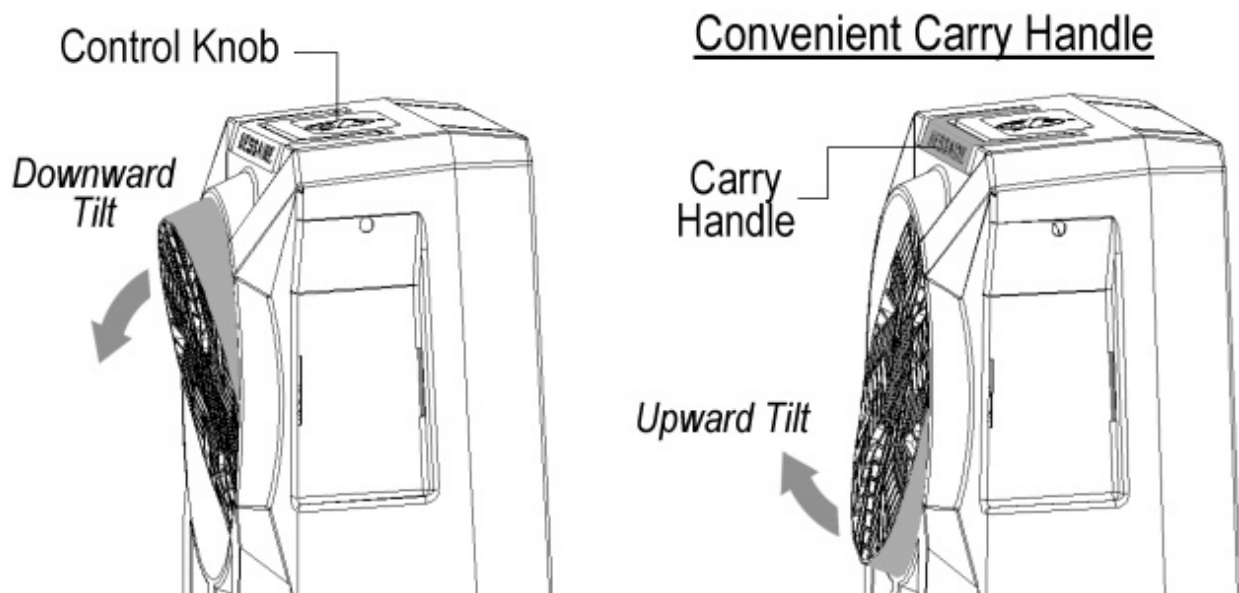
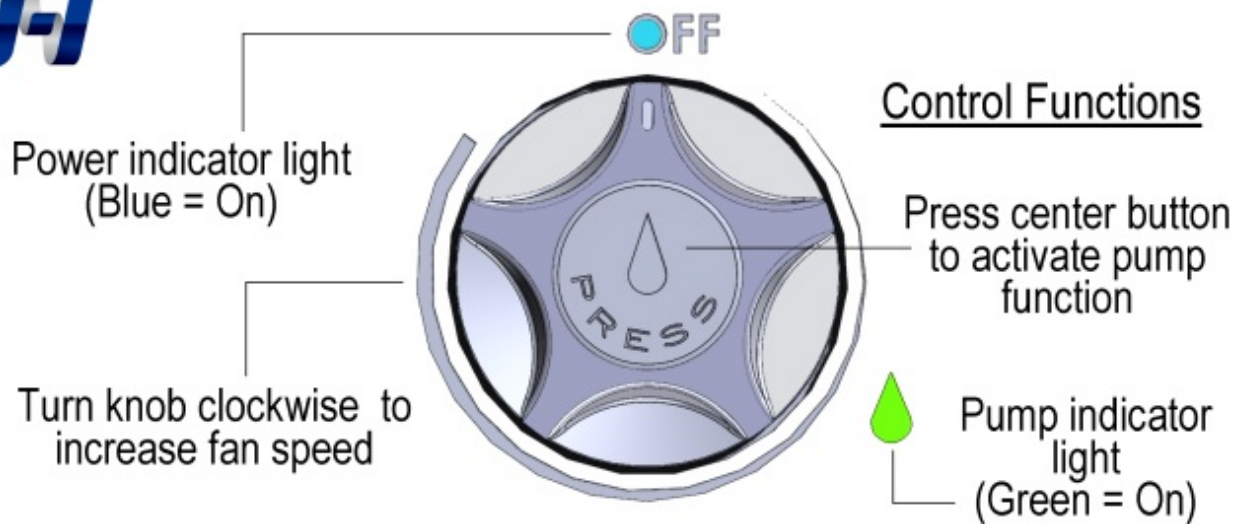
Post Style Battery



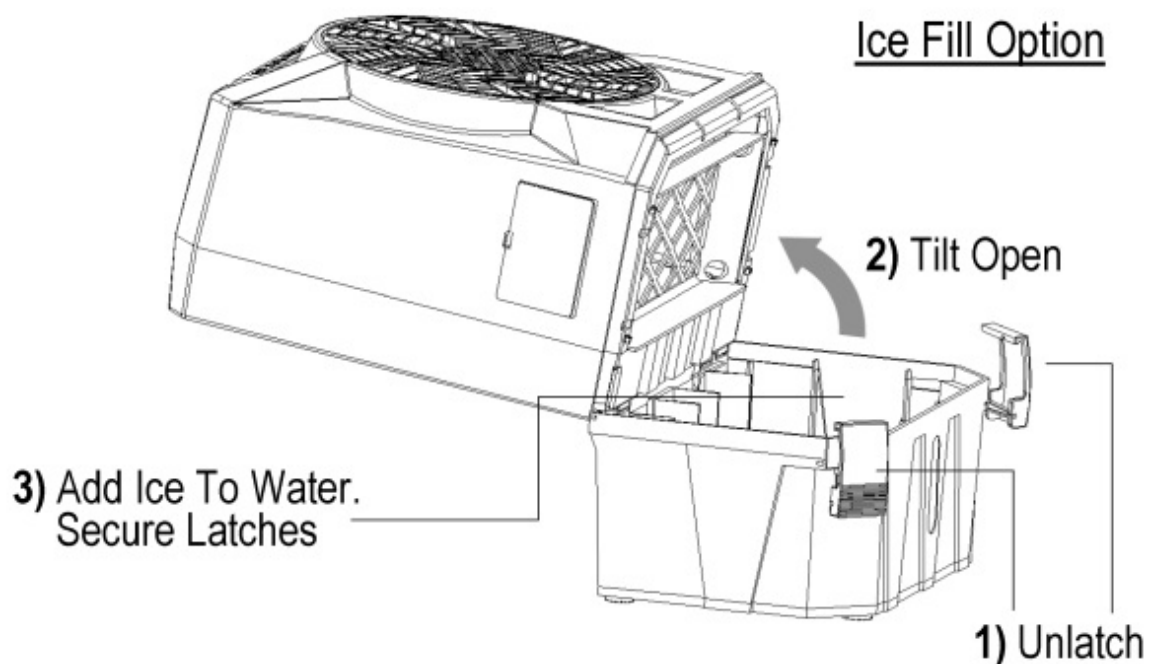
Standard Battery



Features



Directional Airflow Tilt (manually tilted up or down)



Maintenance

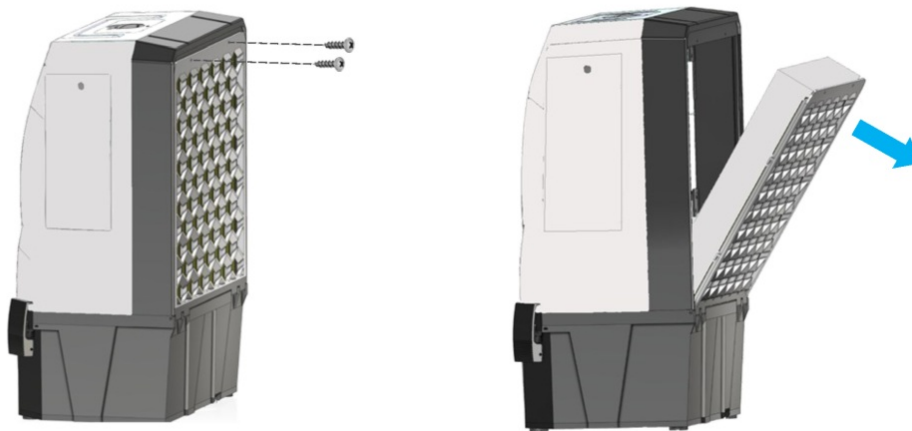
Cleaning Cooler & Rigid Media Pad:

The removable panel & pad can be gently sprayed off to remove build up. A soft bristle brush can also be used. NEVER spray pads with water while cooler is in operation. Damage can occur to the motor and will void the warranty.

Note: Diluted vinegar is recommended for cleaning of cooler and can be periodically cycled through during normal use.

Removal Of Back Panel:

Disconnect power supply. Remove the phillips screws from the upper back side of cooler. Pull out top of back panel, lift out.



Removal Of Rigid Media:

Once back is removed, the media pad will be accessible. Note: Pad may be held in place with pins (media keepers) which will need to be removed to free up the pads.

Storage:

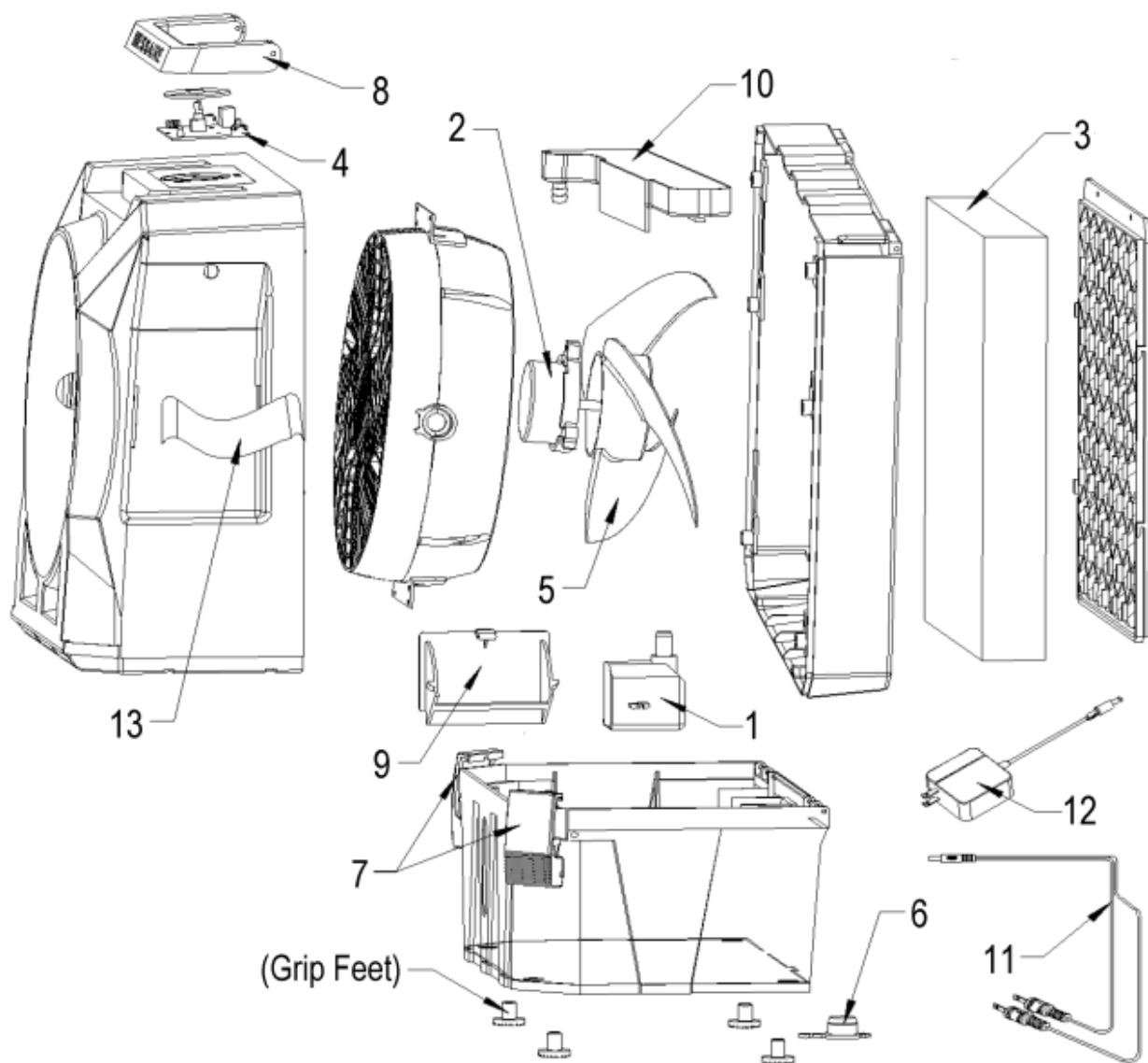
Drain tank and wipe dry. Drain plug is located on bottom of cooler. Dry pad by running fan without pump for at least 20 minutes.

Visit [Hessaire.com](https://www.hessaire.com) for additional maintenance tips and service videos.

Troubleshooting

Problem	Cause / Remedy
Cooler won't turn on	<p>Ensure battery is fully charged and unit switched on.</p> <p>If using AC adapter, ensure breaker is not tripped.</p> <p>Power wire to switch may be disconnected. Reconnect.</p> <p>Control switch may need to be replaced.</p> <p>Battery connection leads are reversed. Ensure red lead is connected to positive on battery and black lead is connected to negative on battery.</p>
Fan will not operate	<p>Ensure fan function switch is on.</p> <p>Make sure nothing is obstructing fan blade.</p> <p>Fan motor may need to be replaced.</p> <p>Motor wire to switch may be disconnected. Reconnect.</p> <p>Control switch may need to be replaced.</p> <p>Slow running – may need capacitor replaced.</p>
Cooler does not pump	<p>Ensure pump switch is turned on.</p> <p>Make sure water level is not low. Add water.</p> <p>Make sure hoses are connected and free of debris.</p> <p>Pump may need to be replaced.</p> <p>Pump wire to switch may be disconnected. Reconnect.</p> <p>Control switch may need to be replaced.</p>
Water leakage	<p>Make sure drain plug is securely in place.</p> <p>Make sure cooler is level.</p> <p>Inspect tank for cracks.</p> <p>Check media pad for water running on outside of unit.</p> <p>Check for leaks in water distribution hose connections.</p> <p>Check water diverter for build up causing spill over of water into the airstream.</p>

Cooler Parts



Ref #	DC18 Parts Description	Part No.
1	Pump	6125000
2	Motor	6125010
3	Rigid Media Panel	CP120
4	Control Knob & Switch	6126900
5	Fan Blade	6012052
6	Drain Plug	6017081
7	Latches (set of 2)	6102016
8	Carry Handle	6105013
9	Manual Fill Door	6017076
10	Water Diverter	6120712
11	DC Connector Power Cable & Ends	6126910
12	AC/DC 115v Adapter	6126920
13	Battery Holder Strap (elastic)	6123021

Each new cooler is warranted to be free from defects in material or workmanship for one full year from the date of original purchase. If a component(s) is found to be defective within this period, the defective part will be provided free of charge. Replacement parts are available through authorized dealers or online. Copy of proof of purchase and serial number label information will be needed for all warranty claims.

What is not covered:

Malfunctions resulting from misuse, negligence, alteration or lack of necessary maintenance.

Loss of time, inconvenience, use of product or other consequential damages due to defects.

Return transportation costs. All return costs are the responsibility of the purchaser.

Hessaire does not cover labor costs associated with troubleshooting or cooler repairs regardless if the product is under warranty or not.

Damaged Shipments:

Hessaire is not responsible for damaged shipments or shortages resulting from carrier mishandling. Notify your carrier's office immediately to file a freight claim in the event of damage. Keep damaged product for inspection until advised by carrier as to disposal.

Please DO NOT return your cooler to Hessaire. Upon authorization, any returns should be sent directly to the distributor/store where purchased.

Instructional videos and other helpful parts replacement information is available on hessaire.com.

Visit hessaire.com for warranty claim/replacement parts request form.



Specifications

- Model: DC18
- Mobile Evaporative Cooler
- 900 CFM

FAQ

Q: Can I use batteries higher than 20v with this cooler?

A: No, using batteries higher than 20v will damage the unit.
Stick to 18v or 20v tool batteries for safe operation.

Q: How do I remove and clean the media pads?

A: To remove and clean the media pads, access them by removing the back panel. Drain the tank, wipe it dry, and run the fan without the pump for drying.

Documents / Resources



[HESSAIRE DC18 Mobile Evaporative Cooler](#) [pdf] User Guide
DC18 Mobile Evaporative Cooler, DC18, Mobile Evaporative Cooler, Evaporative Cooler

References

- [User Manual](#)

Manuals+. Privacy Policy

This website is an independent publication and is neither affiliated with nor endorsed by any of the trademark owners. The "Bluetooth®" word mark and logos are registered trademarks owned by Bluetooth SIG, Inc. The "Wi-Fi®" word mark and logos are registered trademarks owned by the Wi-Fi Alliance. Any use of these marks on this website does not imply any affiliation with or endorsement.