

# Honeywell

## DUAL COMFORT Cool + Warm Mist Humidifier

Owner's Manual



HWC775 Series

HWC778 Series

---

**HWC775 SERIES  
HWC778 SERIES**


---

If you have any questions about the operation of this product, please call us toll-free at **1-800-477-0457**, e-mail us at **ConsumerRelations@HelenofTroy.com**, or visit our website at: **www.HoneywellPluggedIn.com**

# **IMPORTANT SAFETY INSTRUCTIONS**

## **READ AND SAVE THESE SAFETY INSTRUCTIONS BEFORE USING THIS HUMIDIFIER**

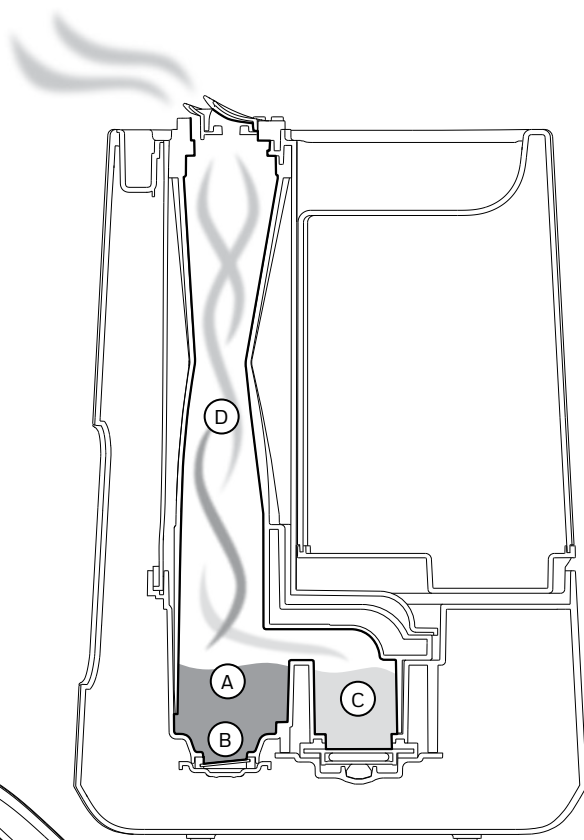
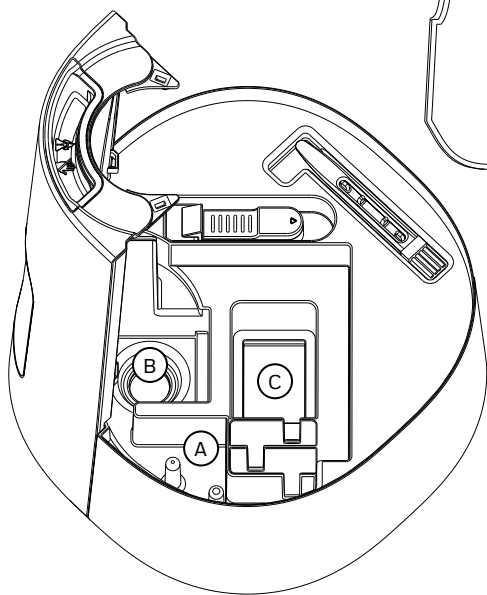
**When using electrical appliances, basic precautions should always be followed to reduce the risk of fire, electric shock, and injury to persons, including the following:**

1. The humidifier should **ALWAYS** be placed on a firm, flat, waterproof surface at least four feet (1.2m) away from bedside, 12 inches (30cm) from the wall. **KEEP OUT OF REACH OF CHILDREN AND PETS.** This product produces hot steam and should be placed in an area not accessible to children or pets, with the power cord out of reach.
2. Be sure the humidifier is in a stable position and the power cord is away from heated surfaces and out of the way to prevent the humidifier from being overturned.
3. **DO NOT** leave the humidifier unattended in a closed room, doing so may cause serious injury or property damage. If room becomes saturated, open the door and turn the humidifier off or down.
4. Before using the humidifier, extend the cord and inspect for any signs of damage. **DO NOT** use the unit if the cord has been damaged. **DO NOT** operate with power cord coiled or with twist tie in place.
5. The humidifier has a polarized plug (one blade is wider than the other) as a safety feature. This plug will fit into a polarized outlet only one way. If the plug does not fit fully into the outlet, reverse the plug. If it still does not fit, contact a qualified electrician. **DO NOT** attempt to defeat this safety feature.
6.  **CAUTION:** To avoid fire or electric shock hazard, plug the humidifier directly into a 120V AC electrical outlet. To avoid risk of fire, electric shock, or personal injury, **NEVER** use an extension cord or power strip.
7. The humidifier should **ALWAYS** be unplugged and emptied when not in operation or while being cleaned. Turn off and unplug humidifier before moving. **DO NOT** move or tilt humidifier while it is in operation. Plug and unplug unit with dry hands. **NEVER** pull by cord.
8. **DO NOT** operate the humidifier without water. Turn off and unplug unit when tank is empty and the reset light is on.
9. Humidifier requires regular cleaning. Refer to and follow cleaning instructions.
10. **DO NOT** operate outdoors; this humidifier is intended for indoor residential use only.
11. **DO NOT** place in direct sunlight, high temperature areas or near computers or sensitive electronic equipment.
12. **DO NOT** cover or insert objects into any openings on the unit. **DO NOT** block intake or output vents.
13. **DO NOT** touch the Nebulizer or Heating Element while the unit is plugged in, as burns could result.
14. **DO NOT** attempt to repair or adjust any electrical or mechanical functions on this humidifier. Doing so will void your warranty.
15. **DO NOT** add any essential oils or medications (e.g. Vicks VapoSteam®) into the Water Reservoir or Water Tank. Doing so could damage the humidifier and void the warranty.
16. **DO NOT** touch the steam vapor. Steam can cause burns.
17. **DO NOT** operate without the Mist Chimney and Mist Chimney Cover in place.
18. For Residential Use Only.
19. **SAVE THESE INSTRUCTIONS.**

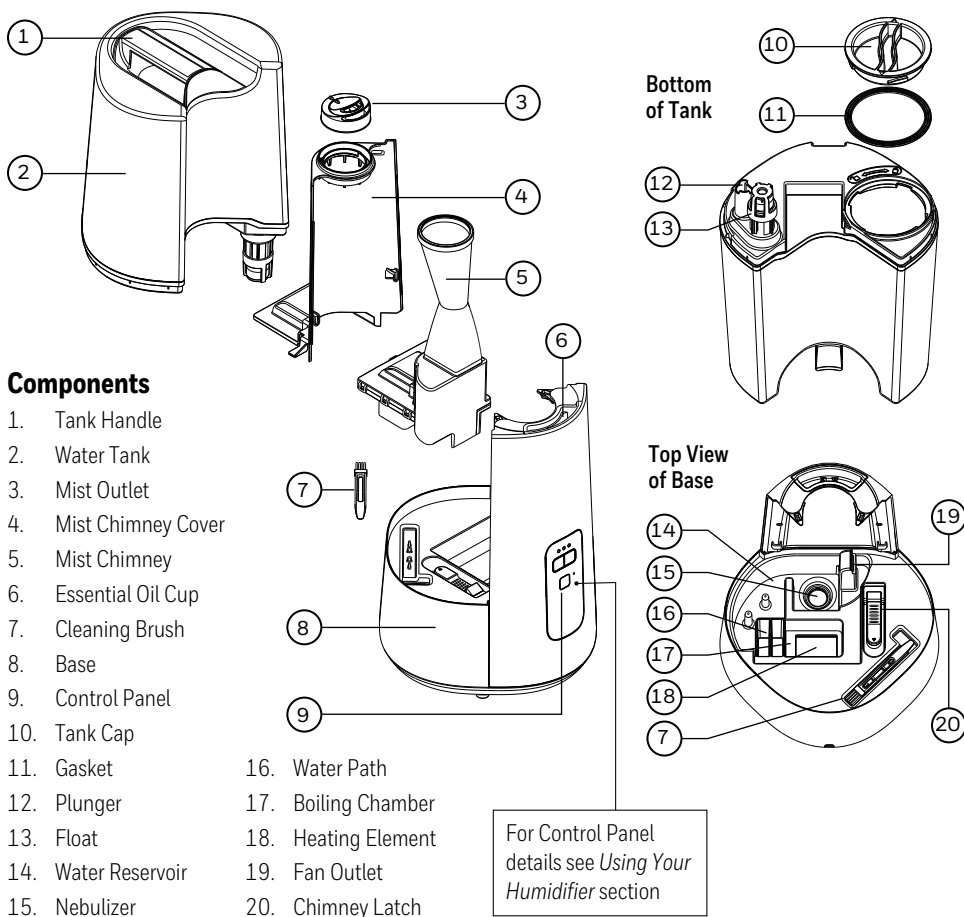
## GETTING TO KNOW YOUR COOL + WARM MIST HUMIDIFIER

### How it Works

- A. Water drains into the Reservoir.
- B. On cool mist setting, a Nebulizer vibrates at an ultrasonic frequency and produces cool, ultrafine mist that travels up the Mist Chimney where it enters the room.
- C. On warm mist setting, water in the Boiling Chamber is boiled to create a steam vapor.
- D. On warm mist setting, the steam vapor mixes with a small amount of cool mist to produce soothing, warm (not hot) comforting mist.



## GETTING TO KNOW YOUR COOL + WARM MIST HUMIDIFIER (continued)



## SETTING UP YOUR HUMIDIFIER

### Unpack the Humidifier

Keep this Owner's Manual for reference.

Remove packaging materials. Remove twist tie from power cord and extend power cord to full length.

Place on a firm, level, water resistant surface a minimum of 12" (30cm) from any walls. Mist should be directed away from any walls, bedding and furniture.



**⚠ WARNING: KEEP OUT OF REACH OF CHILDREN. THIS PRODUCT PRODUCES HOT STEAM AND SHOULD BE PLACED IN AN AREA NOT ACCESSIBLE TO CHILDREN OR PETS, WITH THE POWER CORD OUT OF REACH.**

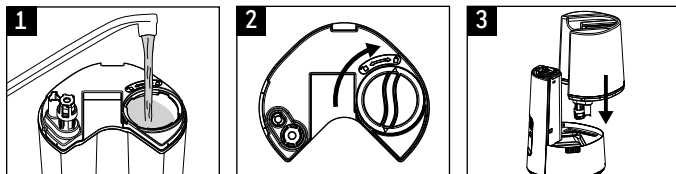
## FILLING / REFILLING

**NOTE:** Tank should be carried using two hands; one hand on the Tank Handle and the other supporting the bottom of the tank.

Kaz USA, Inc. will not accept responsibility for property damage caused by water spillage.

This humidifier holds 1.5 gallons (5.6L) of water (Tank and Reservoir combined).

### Filling



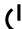
1. Remove Water Tank and turn upside down. Remove Tank Cap by turning counter clockwise (left). Fill Tank with cool water. **DO NOT** fill with warm or hot water.
2. Replace Tank Cap by turning clockwise (right), aligning arrow to lock symbol. Be sure Gasket is in place.
3. Place Tank on Base. Water will drain from the Tank into the Reservoir when the Plunger is engaged.

## USING YOUR HUMIDIFIER

### HWC775 Manual Control

1. Power: Press Power Button  to turn on.

Unit defaults to cool mist, high output setting.

Press Power Button  again to turn off.

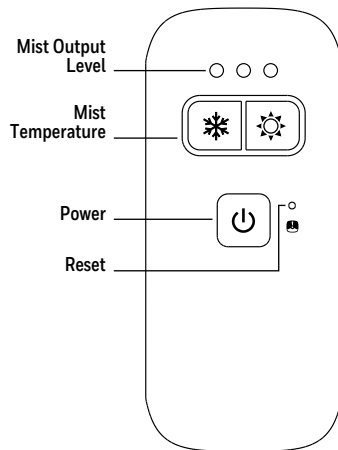
If humidifier was programmed before turning off, previous settings will be remembered. Unplugging the humidifier resets to default settings.

2. **Mist Temperature:** Press Cool  or Warm  buttons to toggle between cool and warm mist output settings.

The Mist Output LEDs and light around the Mist Temperature buttons will be blue when unit is in cool mist mode and orange when in warm mist mode.

**NOTE:** Cool mist is immediate but please allow 5 minutes or more for water to boil to produce warm mist. It is normal to hear the sound of the water boiling occasionally as more water drains into the Boiling Chamber.

3. **Mist Output Level:** Press the desired Mist Temperature button to toggle through low, medium and high (1, 2 or 3 LEDs) mist output settings.  
The higher the output setting, the more moisture enters the air.  
The lower the output setting, the longer the run time before needing to be refilled.
4. **Reset:** The Reset Light has several functions. See next section for details.

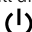


HWC775  
Manual Control

## USING YOUR HUMIDIFIER (continued)

### HWC778 Humidistat Control

- 1. Power:** Press Power Button  to turn on.

The unit will default to cool mist, high output, and will display the current room humidity level. Press Power Button  again to turn off.

If humidifier was programmed before turning off, previous settings will be remembered. Unplugging the humidifier resets to default settings.

- 2. Mist Temperature:** Press Cool  or Warm  selectors to toggle between cool and warm mist output settings.

The Mist Output LEDs and light around the Mist Temperature buttons will be blue when unit is in cool mist mode and orange when in warm mist mode.

**NOTE: Cool mist is immediate but please allow 5 minutes for water to boil to produce warm mist. It is normal to hear the sound of the water boiling occasionally as more water drains into the Boiling Chamber.**

- 3. Mist Output Level:** Press the desired Mist Temperature icon to toggle through low, medium and high (1, 2 or 3 LEDs) mist output settings.

The higher the output setting, the more moisture enters the air.

The lower the output setting, the longer the run time before needing to be refilled.

- 4. Humidistat:** Press the Humidity Control icons  to adjust the humidistat.

To scroll through the numbers faster, press and hold the icon as long as needed until the desired level is shown. The display will blink three times showing the SET humidity level, then the display will return to show the current room humidity level. CURRENT will illuminate on the display to indicate the current room humidity level.


The humidistat can be set between 30%-69%. Below 30%, LO will illuminate on the display to indicate the minimum humidity level. Above 69%, the display will show HI to indicate the maximum humidity level has been set.

**NOTE: The % number displayed on the control panel represents the relative humidity (RH) as measured at the Humidistat sensor. The relative humidity in your room may vary from the number displayed on the humidifier. A comfortable humidity level is 40-60%.**

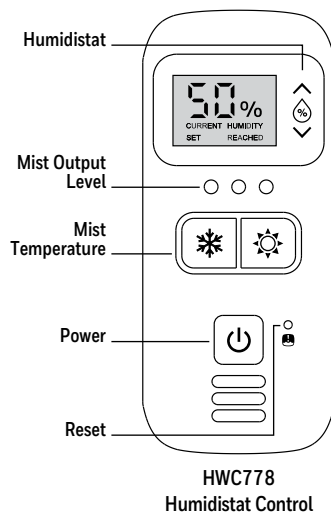
**Humidity Reached** (US models only)

When the set humidity level is reached, HUMIDITY REACHED will appear on the display and the humidifier will turn off. As long as HUMIDITY REACHED is illuminated, the humidifier will not run.

Once the humidity level drops below the set level, HUMIDITY REACHED will disappear and the humidifier will start running again.

To increase the set humidity level, press the Humidity Control icons .

- 5. Reset:** The Reset Light has several functions. See next section for details.

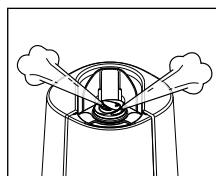
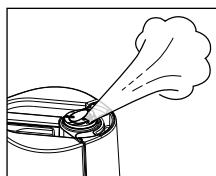


## RESETTING YOUR HUMIDIFIER

| Situation                          | Reset Light        | How to Reset                              |
|------------------------------------|--------------------|---|
| Water Tank Removed                 | Illuminates Orange | Replace Tank on Base (must contain water) |
| Tank Empty                         | Illuminates Orange | Fill Tank and Replace on Base             |
| Mineral Buildup on Heating Element | Blinks Red         | See Cleaning Instructions                 |

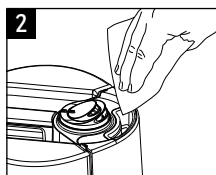
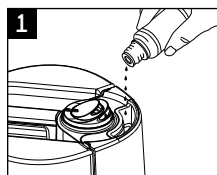
## 2-WAY MIST OUTLET

This humidifier features a 2-Way Mist Outlet that allows you to direct mist in in two directions. Positioning both openings in the same direction results in a strong mist plume into the room. Separating the mist outlets allows for pointing the mist in two directions for wider distribution.



## USING THE ESSENTIAL OIL CUP

This humidifier features an Essential Oil Cup that can be used with your favorite essential oil or liquid inhalant (like Vicks VapoSteam®) for added enjoyment. The cup is heated to help evaporate the oil. This is not a diffuser – the oil does not come in contact with the water but is passively evaporated into the air. Essential oil and inhalant are not included.



1. Add a few drops of essential oil or liquid inhalant in the Essential Oil Cup.

**⚠ WARNING: DO NOT ADD ESSENTIAL OILS, LIQUID INHALANTS OR ANY ADDITIVES TO THE WATER. DOING SO CAN DAMAGE THE HUMIDIFIER AND VOID THE WARRANTY.**

2. To clean the Essential Oil Cup, wait 5 minutes for it to cool. Then gently wipe residue from the cup with a soft cloth.

## HARD WATER AND YOUR HUMIDIFIER

High mineral content in your water, also known as hard water, may cause a white mineral residue to accumulate on surfaces in the room near the humidifier. This mineral residue is commonly referred to as white dust. The higher the mineral content (hardness) of your water, the greater the potential that an ultrasonic humidifier may produce white dust.

With warm mist humidifiers the minerals can cling to the heating element which can prevent it from running efficiently. It is important to clean the Heating Element and Nebulizer regularly.

White dust is not a result of a defect or flaw in the humidifier. It is a result of the amount of minerals suspended in the water you are using. Tap water can be diluted with distilled water to reduce white dust.

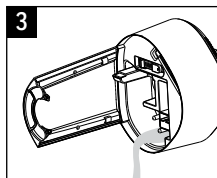
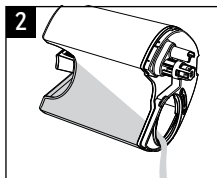
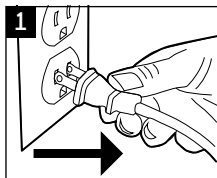
## CLEANING YOUR HUMIDIFIER

To keep your humidifier running efficiently, clean it regularly. Weekly cleaning is recommended. All maintenance should be done in the kitchen or bathroom on a water resistant surface near a faucet.

To properly clean your humidifier, we recommend the separate processes of Scale Removal and Disinfecting. **These two processes must be performed separately.**

### Before Cleaning

If the humidifier has recently been in use on the warm setting, wait at least 20 minutes for unit to cool before beginning the cleaning process.

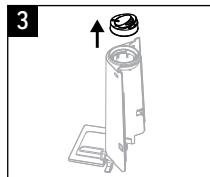
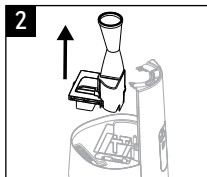
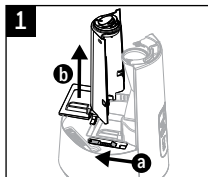


1. Turn off and unplug humidifier. Never clean the humidifier when it is running.
2. Remove Water Tank and empty completely. Remove any accessories from the water tank.
3. Ensure Chimney is removed (See *Disassembly* below), then pour water from the Base into the sink. Be sure to pour out of the side of the Base, as indicated by an arrow, to avoid leaking into the Control Panel.

Replace Chimney and Chimney Cover before beginning the cleaning process.

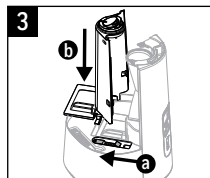
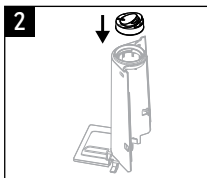
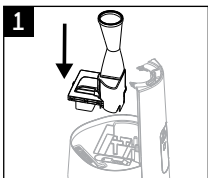
### Disassembly

1. Mist Chimney Cover – a) slide red latch and b) remove.
2. Mist Chimney – grasp Chimney and pull straight up.
3. Mist Outlet – pull out of Mist Chimney Cover (optional).



### Reassembly

1. Replace Mist Chimney.
2. If removed, replace Mist Outlet on top of Mist Chimney Cover.
3. Slide the red latch a) and place the Mist Chimney Cover in place b); secure the latch.

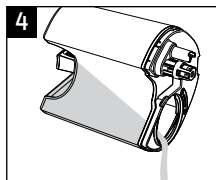
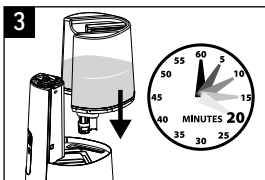
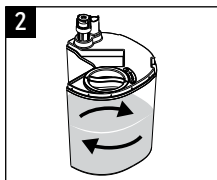
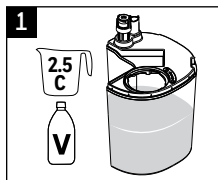




## CLEANING YOUR HUMIDIFIER (continued)

### Scale Removal (Mineral Buildup)

Follow steps 1-3 in *Before Cleaning* section, then follow the additional steps below.



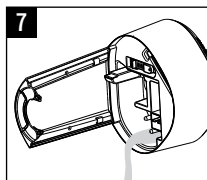
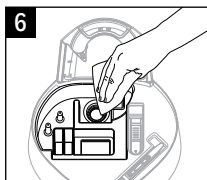
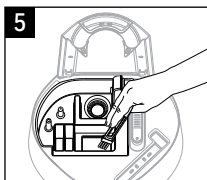
1. Pour 2.5 cups (.6 liters) of undiluted distilled white vinegar into the Water Tank.
2. Replace Tank Cap and swish vinegar in Tank to coat the inside of the Water Tank.
3. Place Tank on Base, allowing vinegar to drain into the Water Reservoir. The vinegar will loosen mineral buildup on the Nebulizer, Heating Element, Float, Chimney bottom, and in the bottom of the Tank. Soak for 20 minutes.

4. Remove Water Tank and empty vinegar into sink.

5. Remove Mist Chimney Cover, Mist Chimney and Mist Outlet to access Reservoir area (see *Disassembly* instructions).

Use Cleaning Brush to loosen

mineral buildup in corners of Reservoir, Water Path and Boiling Chamber.



6. Gently wipe Nebulizer, Heating Element and Reservoir area with a soft cloth or paper towel to remove loosened minerals.

**NOTE: Nebulizer is fragile. DO NOT apply extreme pressure.**

7. Pour vinegar from the Base into the sink. Be sure to pour from the side as indicated by an arrow to avoid leaking into the Control Panel. Rinse the Tank and Reservoir with clean water until the smell of vinegar is gone.

**⚠ CAUTION: DO NOT SUBMERGE BASE IN WATER. DOING SO WILL DAMAGE THE HUMIDIFIER AND VOID THE WARRANTY.**

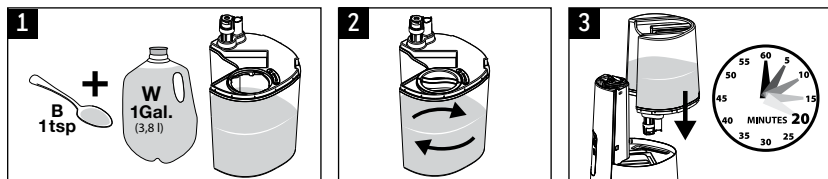
Reassemble Mist Chimney, Mist Chimney Cover, and Mist Outlet (see *Reassembly* instructions)

## CLEANING YOUR HUMIDIFIER (continued)

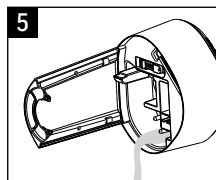
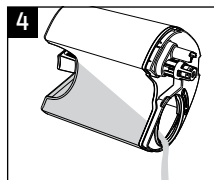
### Disinfecting

Before starting the disinfecting process, follow Steps 1-3 in the *Before Cleaning* section.

**NOTE: Bleach may stain clothes. It is recommended to wear rubber gloves during this process to protect your hands.**



1. Add 1 teaspoon of bleach to 1 gallon (3.8L) of water and add to Water Tank.
2. Replace Tank Cap and swish bleach solution in Tank to coat the inside of the Water Tank.
3. Place Tank on Base, allowing solution to drain into the Water Reservoir. Soak for 20 minutes.
4. Remove Water Tank and empty solution into sink.
5. Ensure Chimney is removed, then pour solution from the Base into the sink. Be sure to pour out of the side of the Base, as indicated by an arrow, to avoid leaking into the Control Panel.
6. Rinse Tank and Reservoir area with clean water until the smell of bleach is gone.



**⚠ CAUTION: DO NOT SUBMERGE BASE IN WATER. DOING SO WILL DAMAGE THE HUMIDIFIER AND VOID THE WARRANTY.**

Reassemble Mist Chimney, Mist Chimney Cover, and Mist Outlet (see *Reassembly* instructions).

## END OF SEASON CARE AND STORAGE

Follow the cleaning instructions when the humidifier will not be used for at least one week, or at the end of the season. At the end of the season, remove any accessories from the humidifier.

Dry the humidifier completely before storing. **DO NOT** store with water inside the Water Tank or Reservoir. Pack unit in original carton and store in a cool, dry location.

## TROUBLESHOOTING

| PROBLEM   | POSSIBLE CAUSE  | SOLUTION  |
|---|---|---|
| <b>Power is on but no mist appears</b>                              | <ul style="list-style-type: none"> <li>Humidity level has been reached (HWC778 humidistat version only)</li> <li>Water Tank is empty</li> <li>Auto shut off has been engaged inadvertently</li> </ul> | <ul style="list-style-type: none"> <li>Increase Humidity setting. See <i>Using your Humidifier</i> section</li> <li>Fill Tank with water</li> <li>Remove the Tank and adjust the Float</li> </ul> |
| <b>Reset Light Illuminated (orange)</b>                             | <ul style="list-style-type: none"> <li>Water Tank is empty</li> <li>Water Tank is not secured on Base</li> </ul>  | <ul style="list-style-type: none"> <li>Fill Tank with Water</li> <li>Secure Tank on Base</li> </ul>   |
| <b>Reset Light Blinking (red)</b>                                   | <ul style="list-style-type: none"> <li>Mineral Deposits on Heating Element</li> </ul>   | <ul style="list-style-type: none"> <li>See <i>Cleaning Instructions</i></li> </ul>  |
| <b>Unit is leaking</b>  | <ul style="list-style-type: none"> <li>Cap is not on tight</li> <li>Cracked tank</li> </ul>   | <ul style="list-style-type: none"> <li>Ensure cap is secured in the lock position</li> <li>Inspect for cracks; contact Consumer Relations for replacement</li> </ul>                              |
| <b>Sounds different on warm mist setting than cool mist setting</b> | <ul style="list-style-type: none"> <li>The sound may increase on warm mist setting as the heating element warms up to boil water</li> </ul>   | <ul style="list-style-type: none"> <li>Wait up to 5 minutes for water to boil then sound should decrease; sound will be slightly higher on warm mist setting</li> </ul>                           |
| <b>Condensation forms around humidifier or on windows</b>           | <ul style="list-style-type: none"> <li>Mist Intensity is set too high for room size or pre-existing humidity level</li> </ul>   | <ul style="list-style-type: none"> <li>Decrease mist output to low setting or open door to the room</li> </ul>  |
| <b>White dust settling on surfaces in room</b>                      | <ul style="list-style-type: none"> <li>Mineral content in hard water</li> </ul>   | <ul style="list-style-type: none"> <li>Dilute tap water with distilled water to minimize white dust</li> </ul>  |

**NOTE:** Failure to keep this unit clean from mineral deposits normally contained in any water supply will affect the efficiency of operation of this unit. Customer failure to follow these instructions may void the warranty.

## CONSUMER RELATIONS

**We are here to help.** Call us toll-free at: 1-800-477-0457

E-mail: [ConsumerRelations@HelenofTroy.com](mailto:ConsumerRelations@HelenofTroy.com)

Or visit our website at: [www.HoneywellPluggedIn.com](http://www.HoneywellPluggedIn.com)

**Please be sure to specify Model number HWC775 or HWC778.**

**NOTE: IF YOU EXPERIENCE A PROBLEM, PLEASE CONTACT CONSUMER RELATIONS FIRST OR SEE YOUR WARRANTY. DO NOT RETURN TO THE ORIGINAL PLACE OF PURCHASE. DO NOT ATTEMPT TO OPEN THE ELECTRICAL HOUSING YOURSELF, DOING SO MAY VOID YOUR WARRANTY AND CAUSE DAMAGE TO THE HUMIDIFIER OR PERSONAL INJURY.**

## SPECIFICATIONS

Electrical rating: 120V, 60Hz., 180W

Capacity: 1.5 gallons (5.6 L)

## 2 YEAR LIMITED WARRANTY

**You should first read all instructions before attempting to use this product.**

- A.** This 2 year limited warranty applies to repair or replacement of product found to be defective in material or workmanship. This warranty does not apply to damage resulting from commercial, abusive, unreasonable use or supplemental damage. Defects that are the result of normal wear and tear will not be considered manufacturing defects under this warranty. **KAZ IS NOT LIABLE FOR INCIDENTAL OR CONSEQUENTIAL DAMAGES OF ANY NATURE, ANY IMPLIED WARRANTY OF MERCHANTABILITY OR FITNESS FOR A PARTICULAR PURPOSE ON THIS PRODUCT IS LIMITED IN DURATION TO THE DURATION OF THIS WARRANTY.** Some jurisdictions do not allow the exclusion or limitation of incidental or consequential damages or limitations on how long an implied warranty lasts, so the above limitations or exclusions may not apply to you. This warranty gives you specific legal rights, and you also may have other rights which vary from jurisdiction to jurisdiction. This warranty applies only to the original purchaser of this product from the original date of purchase.
- B.** At its option, Kaz will repair or replace this product if it is found to be defective in material or workmanship.
- C.** This warranty does not cover damage resulting from any unauthorized attempts to repair or from any use not in accordance with the instruction manual.