

Warranty

This fan comes with a 1-YEAR LIMITED COMPONENT WARRANTY. If your unit does not appear to be working properly, please contact our service center by calling 1-800-317-1688.

Prior to your call, we encourage you to visit our service-related website www.ilivingusa.com for troubleshooting tips and service instructions if needed

Warranty Information



Register your product at our website
Or visit iLivingUSA.com/register-product

Feedback



Love it? Help us make the product more for you
Let us know with a customer review.
Please visit: <https://www.amazon.com/review/review-your-purchases#>

At iLiving USA, we are committed to bringing top quality products to our customers.

iLIVING USA
860 Mahler Road
Burlingame, CA 94010
Tel: 1 - 800 -317 -1688

Email: service@ilivingusa.com

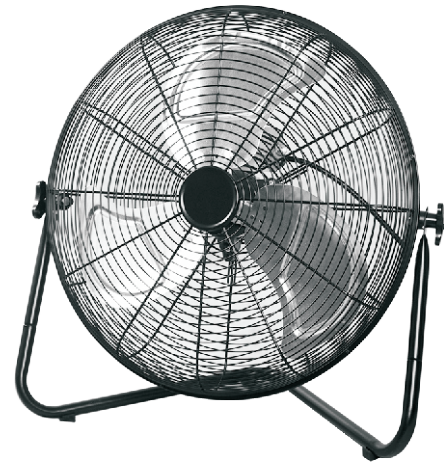
Like us on Facebook: <https://www.facebook.com/ilivingusa/>

Follow us on Twitter: @iLIVINGUSA

Check out our website: www.ilivingusa.com



20" HIGH VELOCITY FLOOR FAN MODEL: ILG8F20



READ AND SAVE THESE INSTRUCTIONS

OWNER'S MANUAL

Please read the instructions carefully before use

2026.03

4

1

CAUTION: Read and follow all instructions before operating fan.
Do not use fan if any part is damaged or missing.

WARNING:

- To reduce the risk of fire or electrical shock, do not expose to water or rain.
- To reduce the risk of fire or electrical shock, do not use this fan with any solid state speed control device.
- If the power supply cord is damaged, contact your local service center or a qualified electrician to install an appropriate replacement cord to prevent any injury or damage.
- To reduce the risk of fire, electric shock or injury to persons, do not use replacement parts that have not been recommended by the manufacturer (e.g. Parts made at home using a 3D printer).
- The appliance does not apply to be used in locations where special conditions prevail, such as the presence of a corrosive or explosive atmosphere (dust, vapour or gas).
- This appliance is not intended for use by persons (including children) with reduced physical, sensory or mental capabilities, or lack of experience and knowledge, unless they have been given supervision or instruction concerning use of the appliance by a person responsible for their safety.
- Children should be supervised to ensure that they do not play with the fan.

RULES FOR SAFE OPERATION:

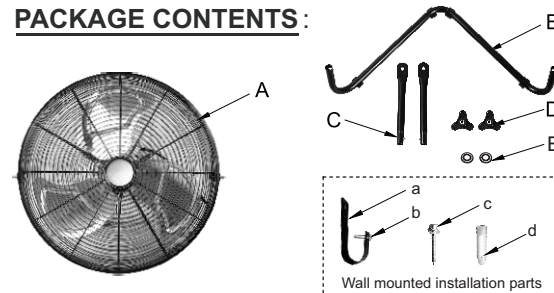
1. Never insert fingers or any other objects through the grill guard while the fan is in operation.
2. Disconnect the fan from its power source before moving it from one location to another.
3. Disconnect the fan from its power source before cleaning.
4. Ensure the fan is on a stable, flat surface before use and during operation.
5. Do not use the fan in windows. Rain and moisture may create an electrical hazard.
6. Close supervision is necessary when this fan is used near children, the elderly and pets.
7. Do not place the fan near an open flame, cooking or heating appliance, or hot surface.
8. This fan should not be operated outdoors.

CAUTION: Do not alter the fan's assembly.

WARNING: Ensure that both the front and rear guard screws are fully tightened and locked in place before operation.

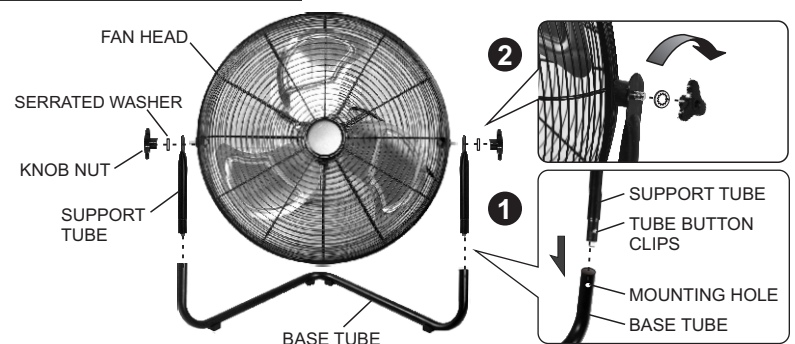
IMPORTANT: Power surges or excessive heat may cause the fan to shut off.

PACKAGE CONTENTS :



Part	Description	Quantity
A	FAN HEAD	1
B	BASE TUBE	1
C	SUPPORT TUBE	2
D	KNOB NUT	2
E	SERRATED WASHER	2
a	HOOK	1
b	HOOK SCREW (M5x25)	1
c	SCREW (ST6x50)	1
d	ANCHORS (10x50)	1

ASSEMBLY INSTRUCTIONS:



Step 1: Insert the two support tubes into the base tube in the correct direction.
Step 2: Assemble the support tube with both sides of the fan head.

OPERATING INSTRUCTIONS

Tilting the fan head upward allows it to pull air from the floor.

SPEED CONTROL:

Select air speed by setting switch to either LOW(1) - MEDIUM(2) - HIGH(3) or OFF(0). It is normal for the motor to feel warm to the touch. This fan is equipped with a thermostat that will automatically shut off the unit if it overheats for any reason. If this occurs, immediately unplug the fan from the outlet.

CLEANING

WARNING: Unplug from electrical supply source before cleaning.

1. Use a soft, damp cloth then wipe with dry cloth.
2. Do not use harmful cleaners to paints or plastics.
3. Do not bend the blades.

RATING

ILG8F20: 120V~ 60Hz 120W 1.0A

2

3