

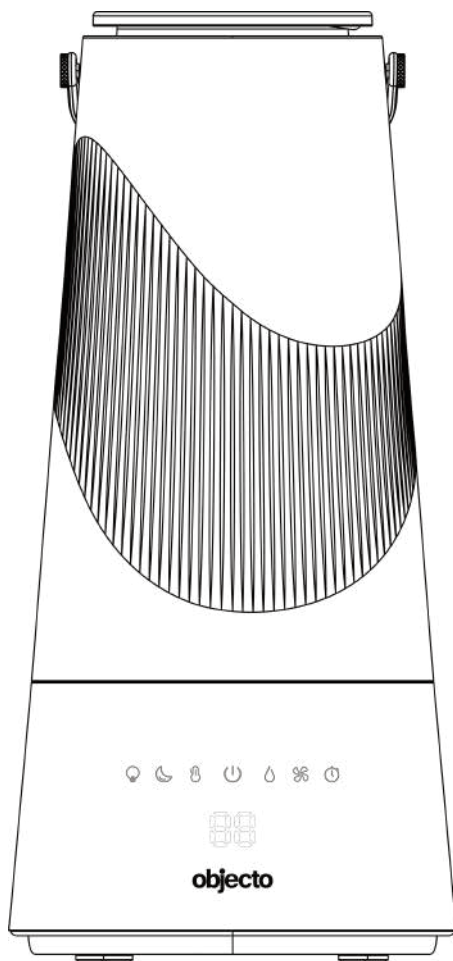


USER MANUAL

objecto

H10 Top Filling Humidifier

Digital Display & Remote Control



READ AND SAVE THESE INSTRUCTIONS

WHEN USING ELECTRICAL APPLIANCES, BASIC SAFETY PRECAUTIONS SHOULD ALWAYS BE FOLLOWED TO REDUCE THE RISK OF FIRE, ELECTRIC SHOCK, AND INJURY TO PERSONS, INCLUDING THE FOLLOWING:



Only use the humidifier in accordance with the specifications outlined in this manual. Usage other than what has been specified here may result in serious injury.

1. Check the voltage of your electricity supply is the same as that indicated on the appliance.
2. DO NOT add water to moisture outlets directly, or it will damage the unit.
3. Do not allow children to play with any product packaging, such as plastic bags.
4. To avoid fire hazards, NEVER put the cord under rugs, near heat registers, radiator, stoves, or heaters.
5. DO NOT place humidifier near heat sources such as stoves, radiators and heaters.
6. Do not attempt to refill the humidifier without first unplugging the unit from the electrical outlet.
7. DO NOT operate any appliance with a damaged cord or plug if it has been dropped or damaged in any manner. Contact appliance manufacturer for examination or repair.
8. Always place the humidifier on a firm, flat, level surface.
9. DO NOT allow the moisture outlet to directly face the wall.
10. NEVER tilt, move, or attempt to empty unit while it is operating.
11. Power off the unit and unplug before removing the water tank or moving the unit.
12. DO NOT attempt to repair or adjust any electrical or mechanical functions of this unit. Doing so will void your warranty. The inside of the unit contains no user

serviceable parts. All service should be performed by qualified personnel only.

13. Do not plug the cord with wet hands: electric shock could result.

14. NEVER use detergent, gasoline, glass cleaner, furniture polish, and paint thinner, or other household solvents to clean any part of the humidifier.

15. Do not pour water into any openings other than the water tank.

16. Excessive humidity in a room can cause water condensation on windows and some furniture. If this happens, turn the humidifier OFF.

17. Never place the base under water or immerse in liquids.

18. Regarding maintenance, filling, cleaning and descaling of the appliance, refer to the related chapter in the manual.

19. This appliance can be used by children above ages 8 years and people with reduced physical, sensory or mental capabilities or lack of experience and knowledge if they have been given supervision or instruction concerning use of the appliance in a safe way and understand the hazards involved.

20. Children shall not play with the appliance.

21. Cleaning and user maintenance shall not be made by children without supervision.

22. The appliance is only to be used with the power supply cord provided with the appliance.

23. Unplug the appliance during filling and cleaning.

24. The excess of moisture may wet the surface where the humidifier is placed.

25. If the supply cord is damaged, it must be replaced by the manufacturer to avoid hazard.

26. Be aware that high humidity levels may cause growth of bacteria.

27. Do not permit the area around the humidifier to become damp or wet. If dampness occurs, lower the output of the mist. Do not allow absorbent materials, such as carpeting, curtains, drapes, or tablecloths, to become damp.

28. Never leave water in the reservoir when the appliance is not in use.
29. Empty and clean the humidifier before storage.
30. Empty the tank and refill every third day. Before refilling, clean it with fresh tap water. Remove any scale, deposits, or film that has formed on the sides of the tank or on interior surfaces and wipe all surfaces dry.
31. DO NOT add essential oils into the water tank or base chamber. This will damage the humidifier. Only add essential oils to the aroma pad.



WARNING/AVERTISSEMENT:

- **INGESTION HAZARD:** This product contains a button cell or coin battery.
- **DEATH** or serious injury can occur if ingested.
- A swallowed button cell or coin battery can cause **Internal Chemical Burns** in as little as 2 hours.
- **KEEP** new and used batteries **OUT OF REACH Of CHILDREN**
- **Seek immediate medical attention** if a battery is suspected to be swallowed or inserted inside any part of the body.
- **DANGER D'INGESTION:** Ce produit contient une cellule boutonée ou une batterie de pièces.
- **La** mort ou les blessures graves peut survenir si elles sont ingérées.
- **Une** cellule à bouton avalée ou une batterie de monnaie peut provoquer des brûlures chimiques internes en aussi peu que **2 heures**.
- **Gardez** les batteries neuves et utilisées hors de portée des enfants.
- **Recherchez** un médecin immédiat si une batterie est suspectée d'être avalée ou insérée dans une partie du corps.



PRODUCT SPECIFICATIONS AND PARTS

SPECIFICATIONS

ITEM NUMBER: H10

MODEL NUMBER: HM-63WH

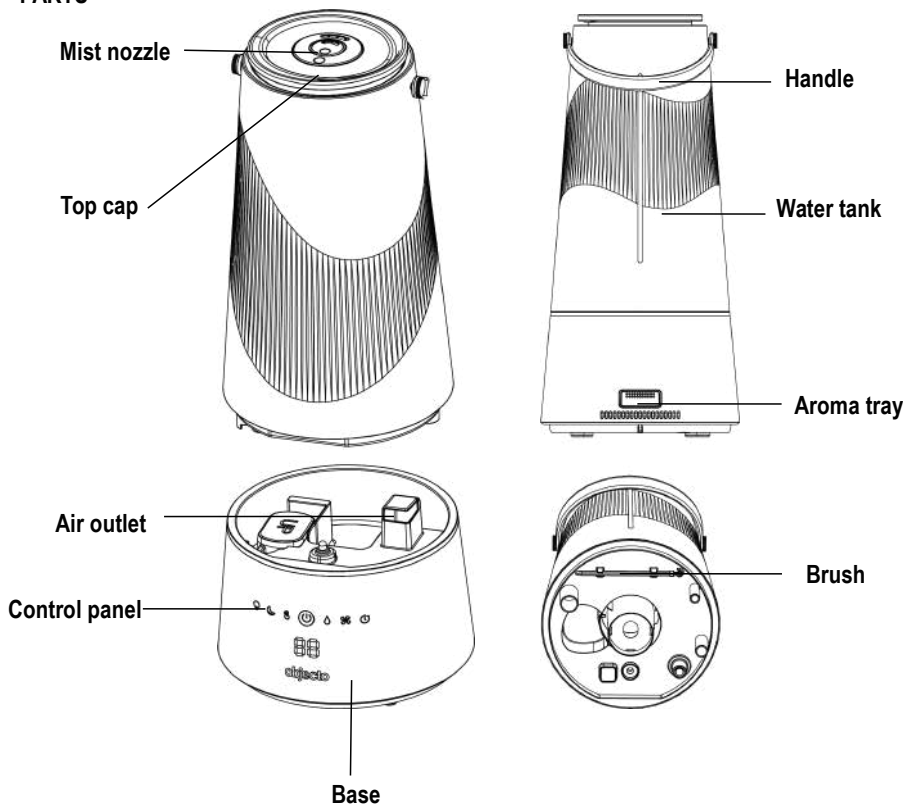
HUMIDIFYING MODE: Ultrasonic Top Fill Warm & Cool Mist

POWER SUPPLY: 120V, 60Hz

TANK CAPACITY: 6L/ 1.58 gallons

DIMENSIONS: 8.78" x 8.78" x 18.7" (L x W x H - inches)

PARTS



GETTING STARTED

SET UP

Select a firm, flat location - at least 12 inches away from any wall or object for proper air flow. Place the humidifier on a water-resistant surface, as water can damage furniture and flooring. Do not place unit directly on carpet, towels, blankets or other absorbent surfaces.

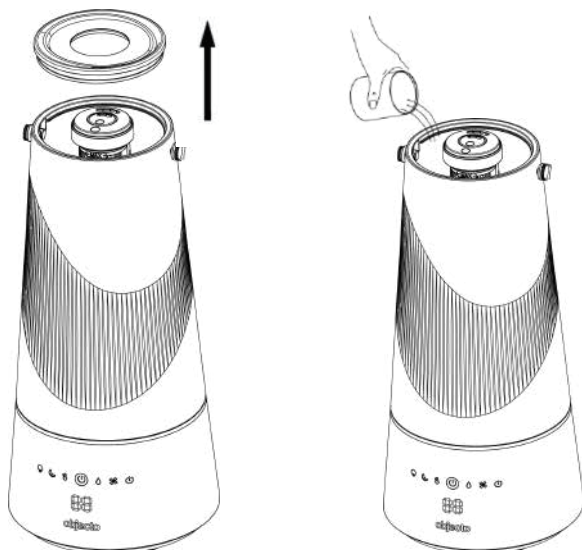
We will not accept responsibility for damage caused by water spillage.

FILLING

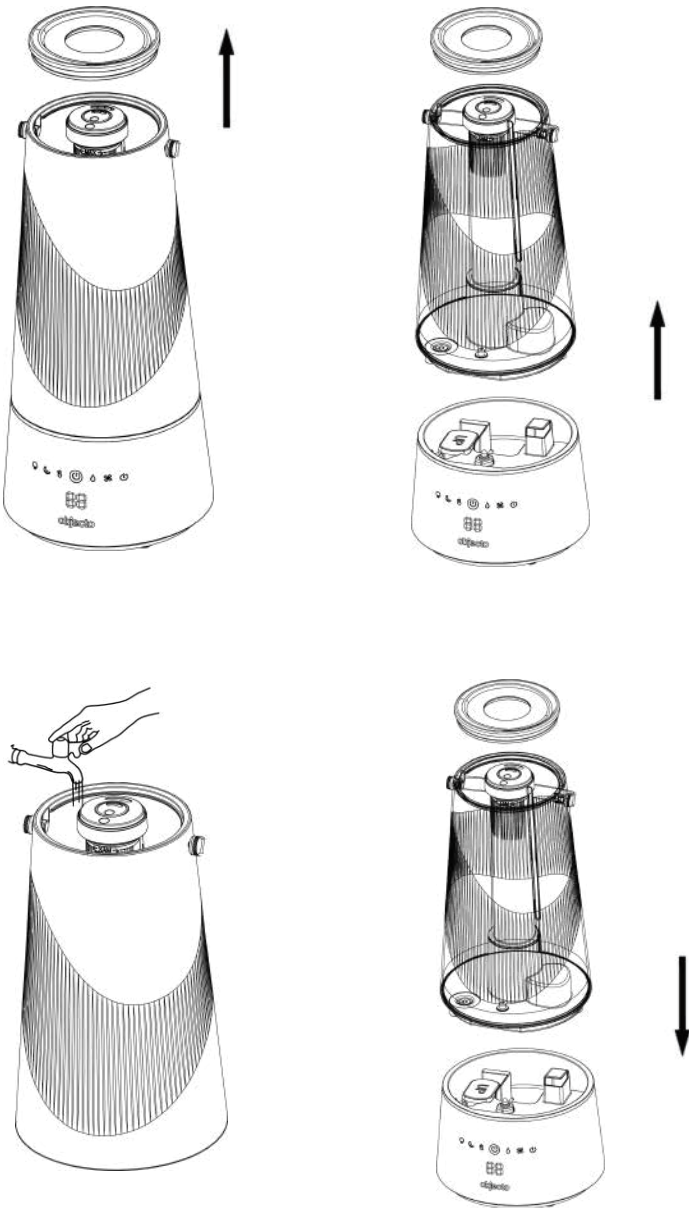
Make sure the unit is unplugged.

Add water to the humidifier by following the diagram in A or B.

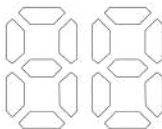
A. Remove the top cap and add water directly to the tank.



B. Remove the top cap and take the water tank off the unit base and fill the water tank with water before returning it to the base.



FUNCTIONS AND FEATURES



POWER BUTTON



Press the Power Button to turn on or switch off the device.

The LED screen displays the humidity level between 30% and 80%. If it displays “LO”, the humidity level of the ambient air is less than 30%. If it displays “HI”, the humidity level of the ambient air is more than 80%.

SLEEP MODE BUTTON



Press this button to enter sleep mode.

Under sleep mode, the screen displays “SP” for 5 seconds then all lights and screen will turn off. Press this button again to exit the sleep mode.

HEATING BUTTON



Press the Heating Button to turn the heating function on or off.

NIGHT LIGHT BUTTON



1st press: The night light is activated and circulates through 7 colors automatically.

2nd-8th press: The night light will change in 7 colors

9th press: The night will be turned off.

HUMIDITY SETTING BUTTON



Press the humidity setting button to set the targeted humidity level. The humidity level can be set from 40% to 80%, in 5% increments. The LED screen will display the level selected or "CO" for default setting. We recommend a humidity level between approximately 40% and 60%. The device will stop mist output when the ambient air reaches the required humidity level and resumes when the humidity level drops by 5%.

SPEED BUTTON



Press this button to select the mist output volume, from Low, Medium to High, and the LED screen will show 1 at low mist, 2 at medium mist, 3 at high mist.

TIMER SETTING BUTTON



Press the Timer Button to set the desired operation time. Select from 1 to 12 hours or CO for continuous operation. The screen will display the time selected or "CO" for continuous operation. After 5 seconds, the screen automatically switches to the real time ambient relative humidity. The machine will stop automatically when the selected operating time has elapsed.

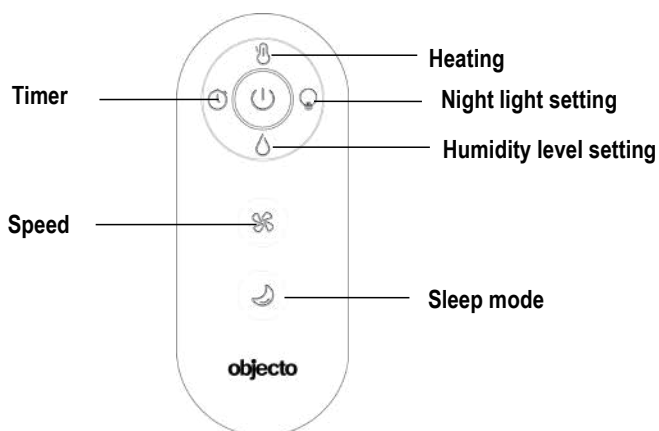
No Water in Water Tank or No Water Tank on the base

If there is no water in the water tank, the Power Button will turn red and flash, and the LED screen will display **E1**.

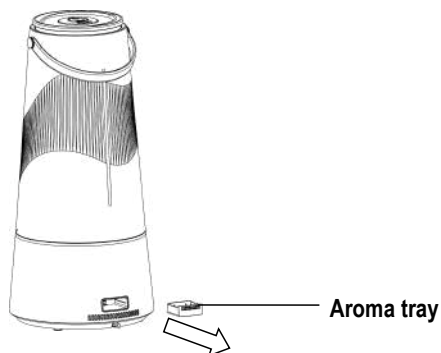
If tank is removed, the indicator of Power Button will turn red and the LED screen will display **E2**.

REMOTE CONTROL

The device is equipped with a remote control with function buttons shown below.



ESSENTIAL OIL



1. An aroma pad is included in the aroma tray on the back of the unit.
2. Remove the tray from the unit.
3. Add a few drops of an essential oil – add more drops on your aroma pad to strength preference.
4. Return the tray into the unit.

Do not use any other liquids or cleaning solutions in the aroma pad, do not drop the essential oil directly into the water tank or water chamber, this will damage the unit.

CLEANING

CLEANING

- **Always unplug the unit before servicing.**

GENERAL CLEANING

- **Inside the base of the unit.** Pour excess water out of the unit. Wash out the unit with fresh water using the cleaning brush and a soft cloth as needed. **Do not submerge the base of the unit into water, or allow water to enter through the air inlets or air outlet.**
- **Water tank.** Empty water tank. Remove the top cover and clean the inside of the tank with fresh water, vinegar solution and cloth or light brush. Rinse after cleaning with fresh water.
- **Outer surface of the unit.** Wipe the surface of the unit with a soft, damp cloth if needed.

DESCALING

- **Depending on usage and water type, cleaning to remove scale may be required weekly or every other week to improve unit performance.**
- **If you live in a hard water area, we recommend the use of distilled water for your humidifier. This will help reduce the output of minerals or ‘white dust’.**

Warning:

- **Do not clean the unit or water tank with cleaning chemicals of any kind as they may contain bleach. Use vinegar solution ONLY.**

ULTRASONIC DISK

1. Unplug unit.
2. Remove the tank and empty all water from unit base and tank.
3. Locate the ultrasonic disk on the inside center of the base unit.
4. Use **ONLY** the enclosed cleaning brush to **gently** clean the disk and remove build up and deposits.
5. Drain water in the base according to the drainage direction. Make sure water won't flow into the Air Exhaust.

Do not scrub or scrape the ultrasonic disk.

If scale becomes difficult to remove with brush:

1. Fill the Base with: mixture of 1 tsp. white vinegar and 1 tsp. Water.
2. Let solution stand for 5 minutes.
3. With the vinegar in the Base, clean all interior surfaces with a soft cloth or brush to help remove scale.
4. Also check mist nozzle, filter and mist tube in water tank. Clean as needed.
5. Rinse the Base thoroughly with water to remove scale and vinegar solution.

END OF SEASON STORAGE

- Follow the Cleaning and Descaling instructions when the humidifier will be stored at the end of the season.
- Dry the humidifier completely before storing. **DO NOT** store with water inside the Base or Water Tank.
- Pack the unit in its original carton and store in a cool, dry location.

NOTE: IF YOU EXPERIENCE A PROBLEM, DO NOT ATTEMPT TO OPEN THE MOTOR HOUSING YOURSELF. DOING SO WILL VOID YOUR WARRANTY AND CAUSE DAMAGE TO THE HUMIDIFIER OR PERSONAL INJURY.

TROUBLESHOOTING GUIDE

PROBLEM	SOLUTION
My humidifier does not work.	<p>Plug the humidifier into a working outlet and turn it on by pressing the power button.</p> <p>Make sure the tank is correctly attached to the base and filled with water.</p>
Little or no mist comes out	<p>Excessive Water: There may be too much water in the base chamber. Empty excess water from the base.</p> <p>The water in the tank might be nearly used up</p> <p>Detergent residue or oil may be in tank, wash out tank and try again.</p> <p>Make sure the nozzle is not blocked</p>
The humidity level is low.	<p>The surface of the ultrasonic disk is dirty: Clean the ultrasonic disk.</p> <p>The water temperature in the unit may be too low</p>
The mist has an unpleasant smell.	<p>Change water regularly to avoid dirty water accumulation</p> <p>Clean the humidifier thoroughly and fill it with fresh water.</p>
White dust appears around the humidifier	<p>We recommend using purified or distilled water to fill the humidifier. Avoid using water with high mineral content.</p>
Unit has stopped working.	<p>No or low water. Unplug the unit and refill tank.</p>
Water is accumulating outside the unit or area surrounding unit.	<p>Avoid running the humidifier in a room with over 60% relative humidity.</p> <p>Make sure to place the humidifier on a flat, level surface.</p>
Increased noise level.	<p>The unit must be placed on a flat, level surface. Make sure it is NOT placed on a soft or absorbent surface.</p>
Red light on the power button.	<p>Indicates low water. Unplug and refill the water tank.</p>

FCC Notice

Caution: The user is cautioned that changes or modifications not expressly approved by the party responsible for compliance could void the user's authority to operate the equipment.

This device complies with Part 15 of the FCC Rules. Operation is subject to the following two conditions: (1) this device may not cause harmful interference, and (2) this device must accept any interference received, including interference that may cause undesired operation.

NOTE: This equipment has been tested and found to comply with the limits for a Class B digital device, pursuant to Part 15 of the FCC Rules. These limits are designed to provide reasonable protection against harmful interference in a residential installation. This equipment generates, uses and can radiate radio frequency energy and, if not installed and used in accordance with the instructions, may cause harmful interference in radio communications. However, there is no guarantee that interference will not occur in a particular installation.

If this equipment does cause harmful interference to the radio or television reception, which can be determined by turning the equipment off and on, the user is encouraged to try to correct the interference by one or more of the following measures:

- Reorient or relocate the receiving antenna.
- Increase the separation between the equipment and receiver.
- Connect the equipment into an outlet on a circuit different from that to which the receiver is connected.
- Consult the dealer or an experienced radio/TV technician for help.

FCC Radiation Exposure Statement

This equipment complies with FCC radiation exposure limits set forth for an uncontrolled environment. This equipment should be installed and operated at a minimum distance of 20cm between the radiator and your body. This transmitter must not be co-located or operated in conjunction with any other antenna or transmitter.

LIMITED WARRANTY POLICY

Thank you for selecting our Products.

Please carefully read the User's Manual furnished with this product. We believe that you will be very satisfied with your purchase. We will provide the following LIMITED WARRANTY to you as the original purchaser.

Should service be necessary for any reason due to manufacturing defect or malfunction during the 90 days period, OBJECTO will provide carry-in repair service at our FACTORY SERVICE CENTER at no charge, and for the duration of the extended 9 months parts warranty period will replace the defective part only, not including labor, provided the defect or malfunction is verified along with the date of purchase. In the event service is necessary, you may return the unit to our FACTORY SERVICE CENTER listed below.

- a) Pack the unit in a well padded heavy corrugated box. Be certain that the unit is well protected.
- b) Enclose your check or money order payable to H.S.I REPAIR CORP, in the amount of \$40.00.
- c) Enclose copy of proof of purchase.
- d) Ship the unit prepaid via UPS or parcel post insured.

NOTE: This warranty does not cover.

- a) OBJECTO products which have been damaged by negligence, misuse or accident or which have been modified or repaired by anyone other than our FACTORY SERVICE CENTER.
- b) Damage to OBJECTO equipment that has been improperly connected to the equipment of other manufacturers
- c) Costs incurred in the shipping of OBJECTO products to our FACTORY SERVICE CENTER.

This warranty is valid only to the original purchaser and does not extend to owners of the product subsequent to the original purchaser. Any applicable implied warranties, including the warranty of merchantability, are limited in duration to a period of 90 days from the date of original purchase at retail and no warranties, whether expressed or implied, shall apply to this product thereafter. Under no circumstances shall OBJECTO be liable for any loss or damage, direct or consequential, arising out of the use of, or inability to use this product. (Some states do not allow limitation or implied warranties or exclusion of consequential damage, therefore these restrictions may not apply to you.)

This warranty gives you specific legal rights and you may also have other rights which may vary from state to state.

- a) The Limited Warranty Registry Card must be completely filled out and mailed immediately, in order to validate the Limited Warranty.
- b) You must include copy of your purchase slip when you are returning the unit.

Register your new product online at WWW.OBJECTO.com

SERVICE INFORMATION:

OBJECTO

935 BROADWAY, 6TH FL.

NEW YORK, NY 10010

TELEPHONE: 844-OBJECTO

FAX: 800-433-9099

INTERNET WEBSITE ADDRESS: WWW.OBJECTO.COM