

| SPECIFICATIONS | | | |
|------------------|----------------------|----------|----------|
| Model | AS150 | AS150-V2 | AS150-V4 |
| Capacity | 1,200 PPD | | |
| Voltage* | 240/3/60 | 208/3/60 | 480/3/60 |
| Amps | 48 | 55 | 24 |
| Breaker Size | 60 - 75 | 70 - 75 | 35 - 50 |
| Weight: Shipping | 86 lbs. | | |
| Warranty | 5 Years on all parts | | |

* VAC/Phase/Frequency

FEATURES

| | |
|---------------------------------------|--|
| High capacity | One unit can provide 1200 pints per day or 150 gallons per day. |
| Electrode type humidifier | Generates steam by energizing electrodes that extend into the steam cylinder. Current flowing in between the electrodes causes the water to boil creating steam. |
| Water requirements | The Anden Steam Humidifier uses standard potable water or softened water. Reverse Osmosis "RO" or deionized water is not recommended. Water conductivity 125 - 1250 µS/cm or .125 - 1.25 EC. |
| Easy to install | The Steam Blower is designed to be mounted directly on top of the steam humidifier. The Fan Pack can be remotely mounted with steam hose part number 5940 (sold separately). |
| Accessories included | The steam humidifier, Steam Blower, Vapor-logic® control, RH Transmitter, 7" steam hose and 2' of drain tubing. |
| Display panel | Provides power switch for operation for on/off operations. Display panel to show fill, drain, steam, operations and diagnostics. |
| Internal control board | Manages the complete operation of the humidifier. Fills and drains to maintain proper amperage draw, water level and notifies when service is required. |
| Back flow protection | Air gap in the fill cap prevents pressure buildup. |
| Water level sensor | Manages the water level in the steam cylinder to prevent overfilling. |
| Automatic drain and fill cycle | Unit flushes and fills periodically to maintain the proper conductivity. |
| Optional drain tempering | Unit uses cold inlet water to temper the cylinder water reducing the drain water temperature below 140°F to protect PVC piping and condensation pumps. |
| End-of-season drain | After a 72-hour period with no call for humidity, the humidifier will drain the water from the cylinder. Unit will remain in stand-by mode until next call for humidification. |
| Operating time monitor | Accumulates actual humidifier run time to activate periodic drain and fill cycles, end-of-season drain function and monitors the life of cylinder. |
| Easy to maintain | No cleaning or scrubbing, simply remove the steam cylinder and replace. |



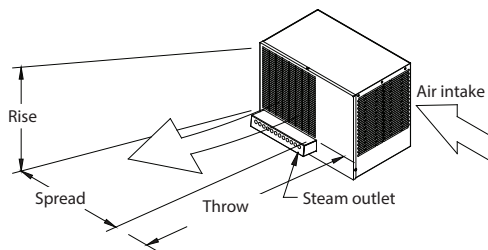
PRINCIPLE OF OPERATION

The Anden High-Capacity Steam Humidifier operates utilizing electrode technology: current flowing between two electrodes in the disposable steam cylinder boils water to generate steam. Drain and fill valves in the humidifier work together to maintain the correct water level in the canister to satisfy the demand for humidity based on the electrical conductivity of the water.

APPLICATION

AS150 series humidifiers are designed to deliver humidity to any facility. The steam is dispersed directly into the area to be humidified through a dedicated Steam Blower that is powered by the humidifier itself.

STEAM BLOWER RISE, SPREAD, AND THROW



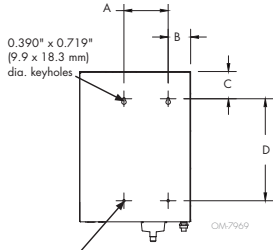
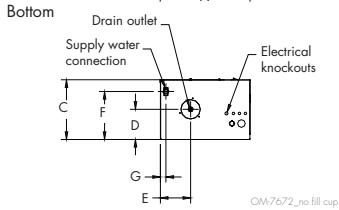
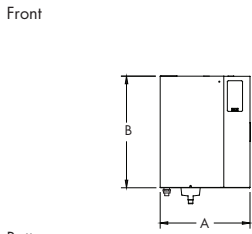
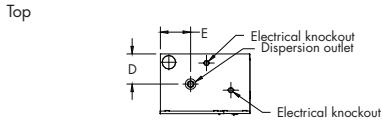
OM-7686

| ANDEN AS150 SERIES HUMIDIFIER AND STEAM BLOWER MINIMUM NON-WETTING DISTANCES | | | | | | | | | | | | |
|--|------------------------|--------|--------|------------------------|--------|---------|------------------------|--------|---------|------------------------|--------|---------|
| Nominal steam capacity | 30% RH @ 70 °F (21 °C) | | | 40% RH @ 70 °F (21 °C) | | | 50% RH @ 70 °F (21 °C) | | | 60% RH @ 70 °F (21 °C) | | |
| | Rise | Spread | Throw | Rise | Spread | Throw | Rise | Spread | Throw | Rise | Spread | Throw |
| lbs/hr | | | | | | | | | | | | |
| kg/h | | | | | | | | | | | | |
| 50 | 3.3 ft | 3.1 ft | 9.6 ft | 3.8 ft | 3.5 ft | 10.7 ft | 4.4 ft | 4.0 ft | 12.0 ft | 4.8 ft | 4.7 ft | 14.0 ft |

Rise: Minimum non-wetting height above the steam outlet of the steam blower
 Spread: Minimum non-wetting width from the steam outlet of the steam blower
 Throw: Minimum non-wetting horizontal distance from the steam outlet of the steam blower

NOTE: Rise, Spread, and Throw distances are determined using substantially still air. The addition of cross flow air source(s) to mix ambient air with saturated blower output can significantly reduce these distances.

Steam Humidifier

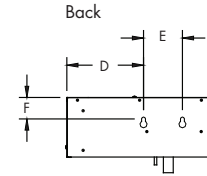
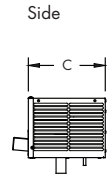
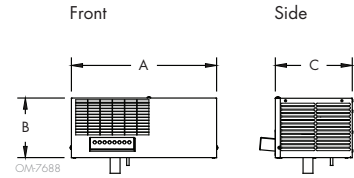


0.390" (9.9 mm) dia. holes

| AS150 SERIES HUMIDIFIER DIMENSIONS BY MODEL NUMBER | | | |
|--|---|--------|-----|
| Dimension | Description | AS150 | |
| | | inches | mm |
| A | Cabinet width | 17.7 | 450 |
| B | Cabinet height | 24.1 | 612 |
| C | Cabinet depth | 11.8 | 300 |
| D | Cabinet back edge to steam/drain outlet centers | 6.0 | 152 |
| E | Cabinet left edge to steam/drain outlet centers | 6.0 | 152 |
| F | Cabinet back edge to supply water connection center | 9.5 | 241 |
| G | Cabinet left edge to supply water connection center | 1.0 | 25 |

| AS150 SERIES HUMIDIFIER MOUNTING KEYHOLE DIMENSIONS | | |
|---|--------|-----|
| Dimension | | |
| | inches | mm |
| A | 7.1 | 180 |
| B | 3.6 | 92 |
| C | 4.4 | 112 |
| D | 16.3 | 414 |
| E | — | — |

Fan Pack



| AS150 SERIES STEAM BLOWER DIMENSIONS | | |
|--------------------------------------|--------|-----|
| Dimension | inches | mm |
| A | 17.9 | 455 |
| B | 13.8 | 350 |
| C | 11.0 | 279 |
| D | 3.6 | 91 |
| E | 7.1 | 180 |
| F | 4.2 | 107 |

INCLUDED CONTROL



Vapor-logic®

Controller

The Vapor-logic controller is included with the Model AS150 Series and sets the standard for control capabilities in electrode humidifiers.

- Easy-to-use menus for all humidifier functions
- Web interface for Ethernet access to all functions
- Accurate, responsive RH control with PID tuning for maximum performance
- BACnet®, Modbus®, and optional LonTalk® for inter-operability with multiple building automation systems
- Automatic drain and fill events for optimized humidifier performance based on water type
- Cylinder drains after a user-specified time with no call for humidity to prevent microbial growth
- A USB port is provided for downloading controller data to a PC for viewing and analysis, data backup and restore, and firmware updates