



Downblast Direct Drive Exhausters with EC Motor

ALX-DD-EC SERIES

Ideal for exhausting air from factories, offices, warehouses or commercial buildings. The ALX series spun aluminum exhaust fan can be used as either a roof top or wall mount exhaust fan.

**FEATURING EC MOTORS
- UP TO 82% EFFICIENCY**



**ENERGY SAVINGS OF UP TO 70% OVER
REGULAR DUTY PSC MOTORS**

FEATURES

- Spun aluminum housing will not rust, chip or peel.
- Aluminum backward inclined wheel is non-overloading.
- For models with PSC Motors see ALX-DD.
- All motors are 1 Phase 120/240V operation and can be operated at 50 or 60 Hz.
- All units can be wall mounted.
- Quick release latches for easy motor access on ALX135 – ALX165.
- Comes with bird screen.
- EC motors offer true variable speed operation and up to 70% energy savings over PSC motors.
- On-board speed adjustment allows simple setup and balancing with LED display.
- Can be controlled remotely up to 50' using a remote mount potentiometer or 0-10V.



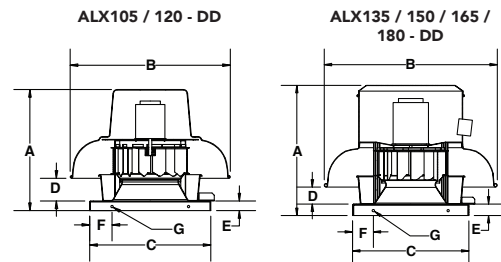
**QUICK RELEASE LATCHES
FOR EASY MOTOR ACCESS**

DISCONNECT SWITCHES

Disconnect switches are available. See Controls & Thermostats section for details.

DIMENSIONS

MODEL	DIMENSIONS (INCHES)										WEIGHT (lbs)
	A	B	C	C2	D	E	F	G Ø	Wheel Diameter	Roof Opening	
ALX105-DD-EC	18.00	25.00	19.00	21.00	2.50	1.50	3.50	0.38	10.50	15.00	33
ALX120-DD-EC	19.00	25.00	19.00	21.00	3.50	1.50	3.50	0.38	12.25	15.00	35
ALX135-DD-EC	22.25	31.25	21.00	24.75	3.13	2.00	3.75	0.44	13.50	17.00	51
ALX150-DD-EC	23.13	31.25	21.00	24.75	3.75	2.00	3.75	0.44	15.00	17.00	56
ALX165-DD-EC	27.13	36.25	24.75	28.00	5.00	2.00	4.00	0.44	16.50	20.75	100
ALX180-DD-EC	31.75	36.25	28.00	24.75	5.50	2.00	4.00	0.44	18.25	20.75	114
ALX210-DD-EC	36.25	43.75	33.13	40.00	5.25	2.50	4.00	0.44	21.00	29.00	176



OPTIONS & ACCESSORIES

- Motorized damper
- Gravity (automatic) damper
- Wall mount bracket (for all sizes up to 24")
- Curb hinge
- Disconnect switches
- Roof Curbs
- Remote mount potentiometer
- Other base (curb cap) options available. See C2 in dimensions table.



Intertek

705





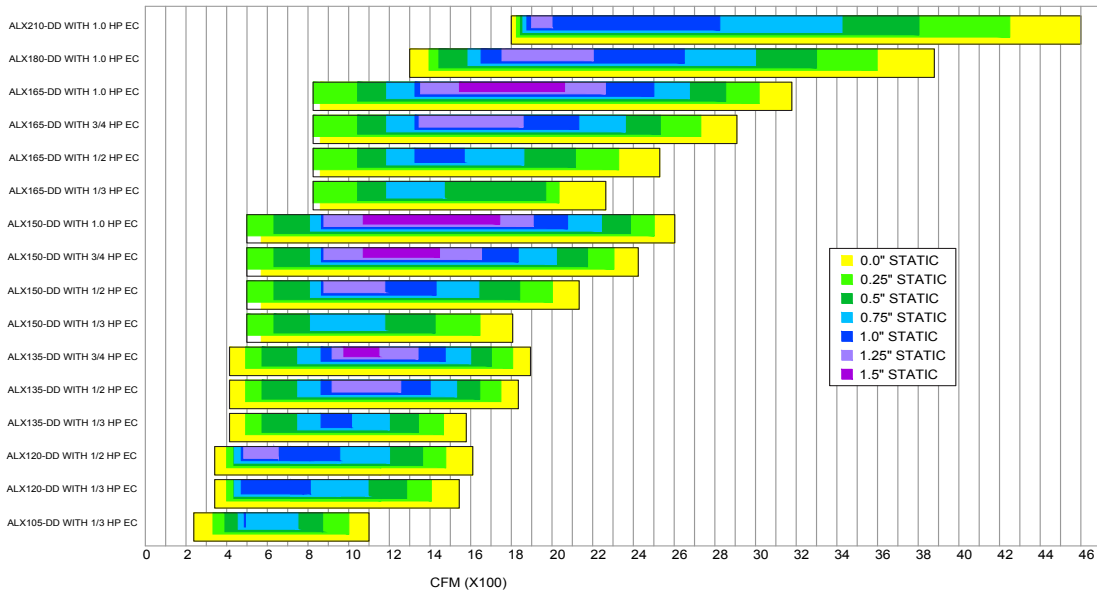
ALX-DD-EC SERIES
Downblast Direct Drive Exhausters with EC Motor
PERFORMANCE SPECIFICATIONS

Model	Motor			Airflow (CFM) @ Static Pressure																			
	HP	Variable Speed	Max RPM	0" SP				1/2" SP				1" SP				1-1/4" SP				1-1/2" SP			
				CFM	BHP	FEI	FEPact (KW)	CFM	BHP	FEI	FEPact (KW)	CFM	BHP	FEI	FEPact (KW)	CFM	BHP	FEI	FEPact (KW)	CFM	BHP	FEI	FEPact (KW)
ALX150-DD100EC	1	Y	1700	2950	0.89	0.47	0.80	2625	0.92	0.84	0.82	2250	0.95	1.07	0.85	2050	0.95	1.15	0.85	1850	0.94	1.21	0.84
ALX165-DD100EC	1	Y	1600	3250	0.96	0.48	0.85	3000	0.99	0.88	0.88	2650	0.99	1.16	0.89	2500	0.98	1.30	0.88	2350	0.98	1.41	0.87
ALX180-DD100EC	1	Y	1200	3800	0.95	0.54	0.85	3325	0.99	0.95	0.88	2650	1.00	1.16	0.88	2200	0.99	1.17	0.88	-	-	-	-
ALX210-DD100EC	1	Y	900	4400	0.95	0.61	0.85	3600	0.99	1.02	0.88	2400	1.00	1.07	0.89	-	-	-	-	-	-	-	-

EC motors can be controlled using the built in potentiometer on motor or by using a 0 to 10 V controller, or by a remote potentiometer. Minimum motor speed 425 RPM (EC Models)

Model	Motor			Airflow (CFM) @ Static Pressure													
	HP	Variable Speed	Max RPM	0.0"		.25"		.5"		.75"		1.00"		1.25"		1.5"	
				High	Low	High	Low	High	Low	High	Low	High	Low	High	Low	High	Low
ALX105-DD033EC	1/3	Y	1800	1100	239	1003	335	877	396	729	460	486	486	-	-	-	-
ALX120-DD033EC	1/3	Y	1700	1544	341	1406	400	1279	436	1095	438	810	472	-	-	-	-
ALX120-DD050EC	1/2	Y	1800	1610	341	1477	400	1357	436	1201	438	955	472	571	484	-	-
ALX135-DD033EC	1/3	Y	1350	1578	414	1469	494	1341	574	1194	750	1009	865	-	-	-	-
ALX135-DD050EC	1/2	Y	1550	1843	414	1747	494	1645	574	1530	750	1405	865	1258	919	-	-
ALX135-DD075EC	3/4	Y	1800	2150	414	2075	494	2000	574	1900	750	1700	865	1600	919	1450	977
ALX150-DD033EC	1/3	Y	1250	2000	570	1800	499	1525	633	1225	812	-	-	-	-	-	-
ALX150-DD050EC	1/2	Y	1200	2133	570	2003	499	1842	633	1640	812	1430	866	1175	879	-	-
ALX150-DD075EC	3/4	Y	1480	2700	570	2550	499	2350	633	2100	812	1925	866	1700	879	1420	1072
ALX165-DD033EC	1/3	Y	1100	2264	860	2034	825	1787	1044	1470	1194	-	-	-	-	-	-
ALX165-DD050EC	1/2	Y	1250	2529	860	2328	825	2115	1044	1861	1194	1568	1320	-	-	-	-
ALX165-DD075EC	3/4	Y	1450	2909	860	2731	825	2546	1044	2362	1194	2132	1320	1879	1441	-	-

ALX UPBLAST SERIES AIRFLOW RANGE WITH EC MOTORS



SCAN TO VIEW FEI CHARTS



SCAN TO USE DELAIR SOFTWARE



Canam certifies that the ALX-DD-EC Series shown herein are licensed to bear the AMCA Seal. The ratings shown are based on tests and procedures performed in accordance with AMCA Publications 211 & 311 and comply with the requirements of the AMCA Certified Ratings Programme. The AMCA certified ratings seal applies to air and sound performance only. The ALX-DD-EC Series shown herein are not approved by AMCA for FEI ratings.