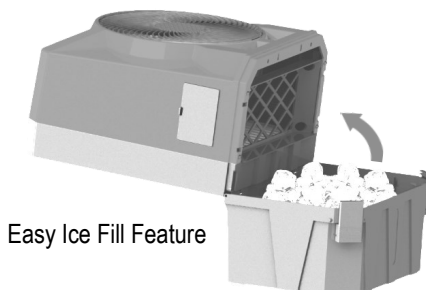


Ideal Uses: Work Shops • Patios • RV Parks • Camping • Outdoor Events • Rehab Areas • Personal Spaces

Features:

Reduces heat stress, provides cool air
Battery Operated or Use With Included 115v AC Adapter
Battery function allows cooler to be used anywhere
Works with all major brand 18 or 20v tool batteries
Variable speed control easily regulates airflow
Carry handle for ease of transportation
Easy tank access for ice fill option
Rugged polypropylene construction
Convenient carry handle
Brushless DC motor



Easy Ice Fill Feature

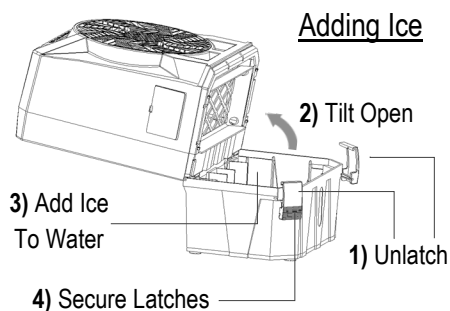


Product Information

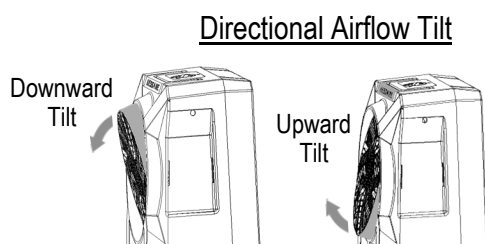
Item # / Mfr. Model	DC18	Description:	High velocity cooling fan
Max. Air Flow	900 CFM	Feature #1	Use with 18-20v tool batteries
Area Coverage	300 Sq. Ft.	Feature #2	Easy access ice fill
Electrical Consumption	40W	Feature #3	AC adapter for use on 115v
Voltage	18-20V DC, 115V AC	Tank Capacity	2.8 Gal.
Speeds	Variable	Run Time Per Tank	2-3 hours
Control Type	Rotary Switch	Assembled Weight	16 lbs
Decibels @ 10ft	47.5	Assembled Dims.	16"x10"x21"
Housing Material	Polypropylene	Color	Red / Dark Gray



AC Power Adapter Included

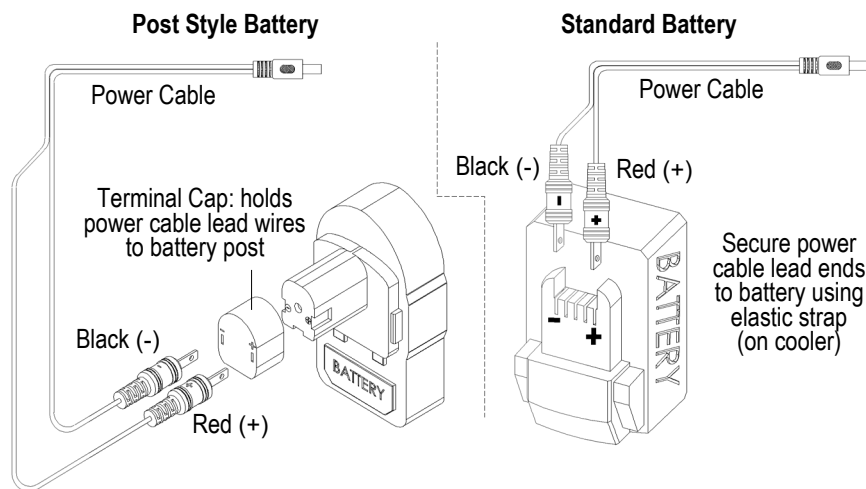


Adding Ice



Directional Airflow Tilt

DC Operation Battery Connections
(works with all major brand tool batteries)

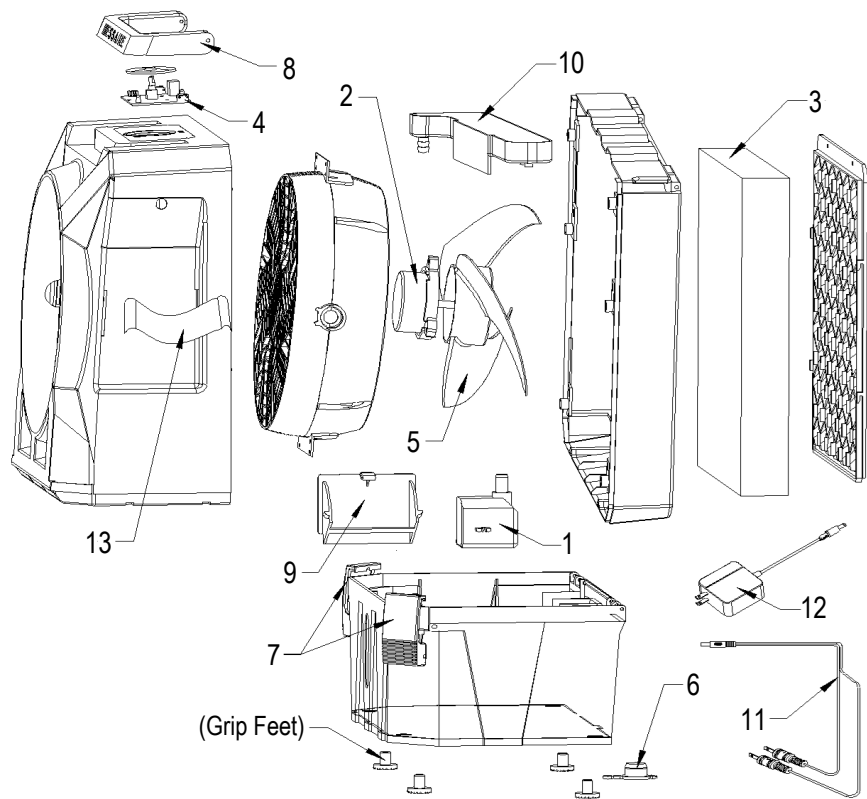


Shipping Information

Model: DC18

Boxed Dimensions	17" x 11" x 23"
Boxed Weight	18 lbs
Pallet Quantities	32 Boxes

Replacement / Service Parts



Ref #	DC18 Parts Description	Part No.
1	Pump	6125000
2	Motor	6125010
3	Rigid Media Panel	CP120
4	Control Knob & Switch	6126900
5	Fan Blade	6012052
6	Drain Plug	6017081
7	Latches (set of 2)	6102016
8	Carry Handle	6105013
9	Manual Fill Door	6017076
10	Water Diverter	6120712
11	Battery Connector Power Cable & Ends	6126910
12	AC/DC 115v Adapter	6126920
13	Battery Strap (Velcro)	6123021

Full Line Of Service Parts & Instructional Videos Available On Hessaire.com