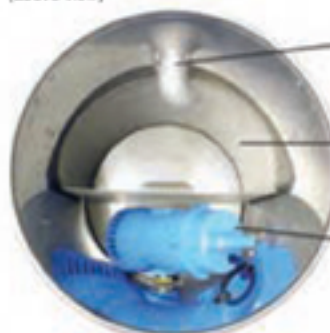


## W70 Wet Vacuum and W70P Slurry Vacuum w/Pump

These 15 gallon wet vacuums are known for their quality, durability, efficiency and long, trouble-free service life. A combined filter/float system that maximizes suction and guarantees that water and other particles do not damage the vacuum motor. Both are excellent choices for high volume pick-up of most liquids and slurry.

The W70P is equipped with a tough, submersible solids-handling pump for continuous drainage as you vacuum. The pump is oil cooled so it can handle the most difficult, particle and debris congested slurries.

Unique Pump/Strainer System in the W70P  
(above view)



**Removable Inlet Scoop:**  
for removing and cleaning strainer and unplugging clogs

**Integral Stainless Steel Strainer:**  
Screens large objects from liquids and protects pump impeller

**Submersible, oil-cooled, solids handling pump:**  
provides efficient, trouble-free service in moving large volumes of water or slurry.

**Patented filter/float system**  
Maximizes airflow and provides reliable wet shut-off



polyester universal  
cartridge filter  
wet shut off float



filter float holder with  
airseal gasket  
optional HEPA Filter  
(part #201300096)

Pullman-Ermator's advanced features make the W70 the number one choice worldwide for slurry pickup and the W70P for slurry pickup and disposal.



- Easy Grip rubber wand sleeve: less operator fatigue, shields hands from metal and extreme temperature
- Electrical outlet for pump cord
- Motor and pump switches: can be operated individually or together
- Motor: 2HP, 2 stage by-pass
- Steel clamps: provides tight airseal
- Tank: 15 Gallon brushed stainless steel
- Wire basket for convenient tool storage
- Cast aluminum swivel hose lock: no hose binding or air leaks.
- 5 ft. steel wand
- Hose: 1.5" x 9 ft. crushproof hose
- Galvanized steel dolly: with 4" swivel castors and 10" rear pneumatic wheels.
- 17-inch floor tool: with adjustable height

### W70 Specifications

HP:	2
Volts:	110
Amp:	9.6
CFM:	118
Vacuum Waterlift:	90 in.
Hose:	1.5" x 9'
Shipping Weight:	72 lbs.
Dimensions:	40"H x 23"W x 25"L
Product Code:	20100054A

### W70P Specifications

HP:	2
Volts:	120
Amp:	9.6
CFM:	118
Vacuum Waterlift:	90 in.
Pump Waterlift:	30 ft. max
Pump Discharge:	70 gal./min.
Hose:	1.5" x 9'
Shipping Weight:	82
Dimensions:	40"H x 23"W x 25"L
Product Code:	20100032C